



Society volunteers complete major review of the Local Heritage List

Over thirty Society volunteers have checked more than two hundred and sixty entries and suggested adding forty-four new sites

John West

As reported in the Winter 2022 Newsletter, the Society's Conservation and Heritage Group has been working with the Council's Heritage Officers to review and update the Local Heritage List. The Society was a major partner in preparing the original list in 2018. We have been working to review current entries and add new ones that meet the criteria of buildings that have significant local interest, but which do not meet Historic England's requirements for the National List.

Over 30 volunteers have checked all the existing 263 entries, updated the text as required, taken recent photos and reorganised the entries into the new Council ward boundaries. In addition the group has put forward additional sites that are worthy of inclusion. We have tried to include more sites in the east of the Borough as well as industrial and commercial buildings that reflect Enfield's heritage. It is proposed that 44 sites and buildings will be added to the List. These include the Administration Building at North Middlesex Hospital, formerly part of the Edmonton Union Workhouse and the Fred Perry Building, Bridport Road, N18 a fine example of 1930s industrial architecture.



186 Bridport Road

The 2018 Local Heritage List is on the Council's website. The Council is working to provide the newly updated List with an improved on-line mapping tool for each entry. Once our volunteers had submitted updates and suggested new entries, a Review Panel was established by the Council. The Panel included Council Officers, a Society representative, the former Chair of the



North Middlesex Hospital

Conservation Advisory Group and a representative from Historic England. The revised list awaits final approval by the Council. As well as the inclusion of new entries, the Panel sought to ensure consistency. For example in some shopping parades along Green Lanes, individual buildings were included but not the whole parade. Where a parade forms a cohesive design in the street scene the whole parade has been included, for example in Palmers Green.

Inclusion in a Local Heritage List does not give the same protection as the Historic England National Listings (Grade I, II* and II), but it is a material consideration that must be taken into account in the event of any Planning Application for a change to the building.

We are very grateful to all the volunteers whose hard work and enthusiasm has made the project possible. The Group is currently working on a list of historic street furniture, including plaques, signs and sculptures.



295-303 Green Lanes, Palmers Green

Presidents' Column



Colin Pointer & Monica Smith MBE

By the time this Newsletter is distributed the Coronation will have taken place. In granting an extra public holiday on 8th May, King Charles urged everyone to consider if they could undertake some voluntary work and the Enfield Society would be delighted to hear from anyone interested in helping to further its aims.

Since its foundation in 1936 as *The Enfield Preservation Society*, it has been run entirely by volunteers. Members of the Management Committee, including the current ones, often multi-task by, for example, running a Group, leading a walk and representing the Society on another committee such as The London Green Belt Council and they cannot be expected to take on more roles.

Inevitably we lose active members: we have recently heard the sad news of the death of Carole Wells who, until COVID shut down morning meetings, helped sell publications at Jubilee Hall for many years.

The interest in attending more events was demonstrated by the demand for places on last year's visits to the Tudor Room. Activities needing volunteers include a morning talks organiser, an evening talks organiser, someone to manage attending outside events such as the Palmers Green Festival as well as volunteers for the stand. These latter roles are important for recruiting members and selling publications. See also page 4.

If you are interested there are more details on the website, enfieldsociety.org.uk/volunteer-with-us or leave a message on the Jubilee Hall phone 020 8363 9495. Also encourage others to join; we need new members to maintain a high membership number, currently about 1800, which helps to ensure our concerns are considered by Enfield Council.

Activities for members were affected by the COVID lockdowns but have now all restarted. The walks programme, ably managed for over 40 years by Stuart Mills remains the most popular activity for members. See centre pages.

With best wishes for an enjoyable summer when we hope to see many of you at our planned and advertised activities.

Society news

Book donation to Crews Hill Bistro

New owners took over The Redwood Bistro in Wolden's Nursery in the New Year. Amy and Marcio thought it would be nice to provide customers with reading material, so they provided books on Enfield for patrons to read while relaxing. These had been very popular prompting lots of interest and conversations, but the books were stolen in February.

Sarah Heyward



Sarah Heyward, who helps with The Enfield Society's book sales, saw a Facebook post about the theft. As a result The Society put together a box of books to replace the stolen ones and these were donated to the bistro in March, to the delight of Amy and Marcio (above).

Sarah Heyward

Plates auction

We are delighted to report that the set of six limited edition plates of Enfield which were recently auctioned by The Society raised £220. The buyer is a member who wishes to remain anonymous. We are most grateful to the member for the generous bid and also to Frank Bayford for donating the set of plates.

Andrew Lack

Membership

Just a reminder that if you haven't already done so, renewals must be completed by the end of June 2023 if you wish to stay as a member of the Enfield Society. If you are unsure please check with us first. There has been a good interest in the paperless

option that has been introduced but as expected the printed Newsletter remains popular too. Thanks for your continued support.

Welcome to our new members

We would like to welcome the following new members to The Society since November 2022:

K Amphlett, M A Arnott, M Baber, V Beasley, C Bex, G & L Bishop, S Bradley, J & R Brooker, T Carter, A Doyle, C & S Driver, L El Moudden, P Fairweather, L Feindt, R Heath, M Heather, J Hermans, E Hogg, L Hutton, L Ioannou, N Irving, C Karageorgi, J Law, J Leatherdale, E Leighton, S Loizou, J Lovell, M Madden, P & G McNamara, M Parrott, A Rea, D & R Rokosz-Gandhi, J & R Sampson, C Sherlock, R & S M Short, J Singleton, R Smith, E Taylor, J Tregelles, R & J Turner, J Warwick P Whelan, S Wright and R & A de Wynter.

Alec Tyler

Jigsaw puzzles



Earlier this year we were contacted by the Partnership Manager of the Enfield Town Schools' Partnership. This was an intergenerational project to bring together a number of Enfield primary schools and care homes that had been operating over the last 18 months. The project was coming to an end and they wanted to produce some bespoke jigsaws for the two generations to do together. The images they wanted were of historic views of Enfield, pictures that would trigger conversations between the generations.

The images were taken from our digital photo archive on our website and included Forty Hall, Trent Park, Bulls Cross Lodge, Library Green, Broomfield House and North Lodge at Whitewebbs. The resulting jigsaws have now been given to the participating schools and care homes.

Hilary Morris

Architecture & Planning

John West

We are currently awaiting the revised programme for the Local Plan. Further details will be provided as soon as these are available on our website and in the Autumn Newsletter. As previously reported, the 21 storey tower block on the site of the Station Tavern in Brimsdown is still being reviewed by the developer to see if they can overcome the many concerns raised by planning officers.

We understand that the Colosseum Retail Park development in Southbury Road is proceeding, although the timescale has clearly slipped since the planning application was approved. Similarly a presentation about the Edmonton Green Shopping Centre development was made to the Environment Forum in February. The developer, Crosstree, is still committed to the scheme, but development has been delayed by a judicial review in that Asda are challenging the planning process. We were pleased to see that the proposals include work to improve the landscaping, soften the urban environment and open up a short section of Salmons Brook. Unfortunately the whole project has a very long timescale over 10 years

A current concern is the number of planning appeals that result from the Council's non-determination of Planning Applications. Under planning law, if the Council does not approve or refuse a planning application within a certain period the applicant can appeal to a Planning Inspector. The Inspection process puts the Council on the back foot and Inspectors will often approve an application that should have been refused at an earlier stage. The problem reflects a shortage of qualified planning officers in London and the financial restrictions that are resulting in recruitment freezes. The Society has raised these concerns with the Council, but with serious pressure on local government finance it is difficult to see how the situation will improve.



Anold House awaiting demolition

A planning application for the demolition of Arnold House on the Ridgeway has been submitted. This is the former Leonard Cheshire Home and the

application is for a 95 bed care home. The Society's main concern was that the new building encroaches on the Green Belt, the boundary of which crosses the garden. Some of our members have pointed out that the existing house is an attractive Arts and Crafts building with many original features. The Council's Planning Officers have been asked to investigate.

On a positive note, Southgate House, the Grade II* Listed House on Southgate High Street has now been sold. The property, still listed by Historic England as being part of Minchenden School, has been vacant since it was vacated by Southgate College nearly 10 years ago.

The property has been on the Council's disposal list for some time and Society has been pressing the Council to identify a new use so that the future of the property can be safeguarded. The Southgate Mosque and Community Association, a registered charity, has now purchased the property and have plans to restore it. Although in need of some long outstanding maintenance it is structurally in good condition. *See Stephen Gilbert's article on pages 8 and 9 for the history of the house and Minchenden School.*

Charity School Edmonton

The National Lottery Heritage Fund has made a first round "Development Grant" of £290,000 to London Historic Buildings Trust (LHBT). This is designed to enable LHBT to develop detailed plans for the restoration and repurposing of the buildings and to obtain planning permission and other necessary consents. This will put LHBT in a position to apply to the National Lottery Heritage Fund for a second round grant taking the total amount up to £1,800,000. This will fund the actual work of restoration. Getting the second round grant is not guaranteed but normally follows unless something has gone badly wrong in the development phase.

The Charity Commission has indicated that it will consider making a "Scheme" which will transfer the buildings from the Girls Sunday School Foundation (the existing historic charity) to LHBT. This will remove the last legal obstacle to the project.

Richard Stones

Our civic environment

The Enfield Society does its best to work on improving the civic environment in the Borough—generally the Council responds well to reports received on its on-line site, "Report a Problem".

Some recent successes following reports by our members have been:-



- 1. Removal of a cluster of unauthorised banner advertisements on fencing adjacent to the rail over road bridge in Lincoln Road.



- 2. Removal of some advertisements for "man & van" on (abandoned?) bicycles outside railway stations.
- 3. Removal of mud and vegetation from the pavement along the length of East Lodge Lane, which was forcing pedestrians to walk in the road.

Abandoned supermarket trolleys are a blight on the street scene and are often seen to be dumped some distance from the store. A website called *Trolleywise* has been set up to enable people to report abandoned trolleys, since the loss of these costs supermarkets dearly.

I would urge all our members to make use of the *Report It* and *Trolleywise* websites. Together we can all make a difference.

Dave Cockle

Enfield Council Report It: enfield.gov.uk/report-a-problem

Trolleywise: wanzl.com/en_GB/360-degree-service/TrolleyWise

Andrew Lack/Enfield Society

New River Loop update

John Cole & Sue Grayson Ford

The New River reached Enfield in April 1612. A grand ceremony to celebrate its completion was held on Michaelmas Day, 29th September, 1613. Fast forward to September 2022 and the most recent desilting work on the New River Loop was underway.

This was a welcome project and a key part of the developing Management Plan which has also resulted in the relaying of the footpath on the western side of Carr's Basin beside the Town Park

(as well as repairs to some revetments close by); chalk treatment; a proposal for wetlands on Chase Green to help improve the catchment and water levels in the Loop (see last newsletter); and the complete refurbishment of the pump near Parsonage Gardens, which tops the water up from Saddlers Mill Stream.

The Enfield Society is currently working with the Council on the development of a New River Loop Trail featuring a number of information boards along the length of the waterway telling the story of its creation, its people and the wildlife it

fosters. This should be completed by Summer 2023, together with other improvements the Council is undertaking, including a new Town Park gateway.

The Enfield Society is also pressing for improved maintenance opposite the Civic Centre where the Loop emerges alongside Enfield Grammar Lower School and Portcullis Car Park. Here the Loop and the immediate area are heavily littered and the water suffers from a high level of duck weed. A fallen tree has been removed and both the Council and school are now hopefully on board to improve the area.

The Enfield Society is committed to working with the Council to finalise the detailed Management Plan—with maintenance schedules—to ensure all parts of the Loop are maintained to a good standard by the Council's numerous departments.

The Council recognises the importance of the waterway as a public amenity, but understandably is struggling to allocate sufficient funds for this work against competing priorities. At least some funding has been secured for future years and further desilting work is planned (subject to funding) next financial year in the Carr's Basin area.

Photographs by John Cole/Enfield Society



Your Society needs you!

Andrew Lack

We now have some significant challenges, both with current vacancies as well as announced departures by some of the current volunteers. If unfilled, these will probably impact the ability of the Society to function.

Newsletter editor

The current editor has indicated he wishes to step down by the end of year. This is an important role as the most tangible connection members have to the Society is through the quarterly newsletter. The role also involves a number of discrete parts and so could be performed by more than one person. Whilst newsletter production is somewhat specialised, we have time to guide new volunteer(s) into the role and we would be happy to provide training—which could provide very useful transferable skills. The Committee is also open to suggestions for new ways to produce the newsletter which may suit a new volunteer.

Events coordinator

Face-to-face contact with the public is an essential part of 'selling' The Society. We are looking for someone to organise attendance at local events and shows. As well the coordinator, we also need volunteers to help staff our stand. This is a very worthwhile activity and only requires a couple of hours a few times a year, but can make a big impact on recruitment and getting The Society noticed.

Talks organisers

Evening talks organiser, Carole Todd will step down at the end of 2023, so we are now in need of finding a successor. The evening talks programme is very popular and this would be an opportunity for someone to arrange talks on particular subjects which you may have felt have been overlooked in the past. We have lists of speakers and can help guide a new volunteer into the role.

We are also without an organiser for morning talks which were popular when held prior to COVID and which allowed members to come to Jubilee Hall avoiding dark winter evenings.

Social media

We have three social media channels (facebook, twitter and instagram) and we would love to have some volunteers willing to post regularly to them.

Making movies

The Society wishes to explore using video to reach a wider audience. Examples could include short films about our heritage, the work we do, some of the challenges facing the Borough. These could be posted to social media and YouTube. So, we are looking for someone who could help make these with us.

Photo scanning

The Records and Research Group have a large collection of photographs which need to be scanned and added to the online archive. The Society would welcome someone coming forward with experience and time to assist the Group with this work.

Details of these roles can be found on the website at enfieldsociety.org.uk/volunteer-with-us and which lists several other ways in which you can help The Society. If you would like to know more, contact us by e-mail at info@enfieldsociety.org.uk

Local Heritage List adds historically important WW2 site

John West and Martin Paine

As part of the Society's work to update the Local Heritage List (see page 1), volunteers became aware of the fascinating history of the 469 Heavy (Mixed) Anti-Aircraft Battery (HAA) at the end of Camp Road, off Slades Hill on open land north of the Jolly Farmers Public House within the former historic Enfield Chase.



AP Archive, British Movietone

At the start of World War II, it became clear that London needed protection from enemy bombers. With limited navigation equipment, the Luftwaffe tended to follow railway lines and rivers. The Lea Valley was a key target because of its industry and having followed the river, bombers could then circle around the capital to attack London from the north. Heavy gun emplacements were therefore established around London as well as in parks within the capital. One of the largest sites was located at Hog Hill north of Slades Hill. Alongside the gun emplacement, there was a large military camp, where over 300 military personnel were stationed. The camp was closely guarded by 24-hour sentries.

From the summer of 1941, around half the personnel were women, hence the name 'Mixed' HAA. Female recruits from the Auxiliary Terrestrial Service (ATS) were known as 'Ack-Ack girls' after the sound of the guns. Women were not allowed to operate the guns but they worked closely with the male gunners to track enemy aircraft using the technology of the day. Prime Minister Winston Churchill's daughter Mary was stationed at the Hog Hill battery from December 1941 to October 1942.

The camp remained in use as a military records office until 1963, when it was closed. However, some of the camp building materials were used to create the 19th Enfield Scout hut nearby.



AP Archive, British Movietone

Lady Churchill is handed a bouquet of flowers during the visit to the Hog Hill air defence position with Prime Minister Sir Winston Churchill, 12th April 1942

The gun emplacements were buried by construction waste in the 1960s but still remain underneath, potentially awaiting rediscovery. A large number of brick and concrete structures including ammunition stores, blast walls to protect the barracks and the footings of the barracks themselves remain although they are mostly overgrown. A few are still visible from the Merryhills Way footpath.

Mary Churchill (later Lady Soames), wrote a diary that was published in 2021[1]. The diary records that having joined the Auxiliary Territorial service (ATS) in October 1941 and completed basic training at Aldermaston, she was posted to Enfield. The diary depicts the mundane nature of many of the camp tasks, but shows the exhilaration Mary felt during live action in the gun teams.

The Enfield site is unusual in being recorded not only in the diary of a well-known figure but also newsreel footage of a visit by Winston Churchill[2]. The Movietone news (AP) archive records the date as 12th April 1942, and Mary's diary records the event. The diary entry for 19th July records that the Prime Minister visited the gunsite for a second time, this time accompanied by US President Roosevelt's Special Envoy Harry Hopkins. The picture shows a bouquet of flowers being presented to Mrs Churchill. The ridge behind is now Valley Fields Crescent. The first picture (left, top) shows the gun emplacement.



AP Archive, British Movietone

Sperry Predictor

The newsreel is of additional historical interest because of the rare footage of women operating equipment at Slades Hill, including the 'Sperry Predictor', which calculated the length of fuse needed to reach the target.

At The Society's suggestion the site has been included in the updated Local Heritage List and Historic England are considering whether the site should be given Listed status on the National Register. Further information about this fascinating site can be found on the Society's website.

[1] Mary Churchill's War, Ed. Emma Soames, Two Roads Publishing, 2021

[2] The British Movietone Archive. Clip reference BM42143 (silent cuts at BM42143/2), see aparchive.com (registration needed) or [youtube.com/watch?v=n1qkTWSNXtA](https://www.youtube.com/watch?v=n1qkTWSNXtA)

For further information and more images, see *A History of Enfield Chase* by Martin Paine (see enfieldsociety.org.uk/enfield-chase) and *Enfield at War 1939-1945*, Geoffrey Gillam & Ian Jones (see enfarchsoc.org/publications).

Society guided walks

Stuart Mills

Our walks are open to all Society members. Please wear suitable footwear. Travel details are correct at copy date, but with engineering works and possible strikes, please check with transport operators close to the date. If walks need to be altered or cancelled, where possible, prior notification will be issued via John West's walkers' e-mail list and/or the Society's member e-mail list.

Friday 19th May. Dollis Valley. **Depart 10.30** from lower entrance to High Barnet Station (toilets inside entrance barriers). Either Northern Line, local buses or about 30 mins journey time on 307 bus from Enfield Town.

About 2 to 2½ hour linear walk mainly along well-maintained paths southwards via a semi-rural route with open spaces and old hedge-lines, ending at Woodside Park Station. Option to return to Barnet area by bus. Possible coffee stop. Leader: Nigel King, contact 07973 747 454.

Bank Holiday Monday 29th May. London Loop. **Meet 10.30** at Chingford bus station. Either by 313 bus or by London Overground train from London Liverpool Street, Hackney Downs or Walthamstow Central stations. Chingford train (with toilets) and bus stations are next to each other.

About 8 mile linear walk through woodland and open countryside via Chigwell for a lunch stop and option to finish walk. Then along part of the Three Forests Way to end at Hainault Country Park for bus to Romford and train into Liverpool Street. Bring lunch or food available. Leader: John West, contact 07904 193 098.

Sunday 4th June. Lea Valley Scenery. **Meet 10.22** at St Margarets Station. Either 09.44 London Overground train from Southbury Station, changing at Cheshunt, or direct by 09.55 Greater Anglia Hertford East train from Tottenham Hale mainline station.

Maximum of 10 mile figure-of-eight walk via sections of the New River and through attractive landscapes created by the River Lea. Lunch stop at "The George IV" pub in Great Amwell or picnic in the nearby churchyard. Afterwards, the New River is followed passing near St Margarets Station, then to Rye House Station, before returning beside the River Lea to St Margarets. If you shorten the route early, the total distance reduces from 10 miles to about 7.25 miles from St Margarets or 8.5 miles when ending at Rye House.

Joint walk with Hampstead Ramblers. Leader: Hadi Samsami, contact 07590 604 391.

Saturday 10th June. Watling Chase Timberland Trail. **Meet 10.15** at Elstree & Borehamwood Station (09.48 Thameslink St Albans train from St Pancras International mainline station, platform B). Otherwise, 307 bus to Barnet and then change to a 107 bus with total journey time of about 1 hour 15 mins from Enfield Town.

About 7 mile linear walk mainly on field paths and tracks via farmland and woods with some long distance views. Lunch stop after 4 miles at Shenley Park café (with option to finish by bus to London Colney). Bring lunch or food available. The afternoon section with views into the Chiltern Hills also ends at London Colney retail park for return by 84 bus to Potters Bar Station. Leader: Mike Cranstone, contact 07597 122 554.

Saturday 17th June. River Stort. **Meet 10.14** at Bishop's Stortford Station by 09.40 Greater Anglia Cambridge train from Tottenham Hale mainline station (also calls 09.48 at Cheshunt).

An 8 mile linear walk beside the scenic River Stort and Stort Navigation, via locks, open countryside and parkland, ending at Harlow Station. Lunch stop and option to finish in attractive Sawbridgeworth town (originally an Anglo-Saxon settlement). Bring lunch or café/pub food available. Leader: John West, contact 07904 193 098.

Wednesday 28th June. Hilly Fields, a visit to St John's Church and Whitewebbs. **Meet 10.30** in Beggars Hollow car park (off Clay Hill near Rose & Crown pub). Bus 456 at 10.03 from Church Street, Enfield Town, stops nearby.

After a gentle walk beside Turkey Brook, in one mile we arrive at St John's for a guided visit to this Grade II listed church that has received Society grant donations.

Then an option to finish by catching the 456 bus or a 1½ to 2 mile walk via Whitewebbs to return to Beggars Hollow. Leader: Stuart Mills.

Tuesday 4th July. Lee Valley Country Park. **Meet 10.54** at Cheshunt Station. Either 10.44 London Overground train from Southbury Station or 10.40 Greater Anglia Cambridge train from Tottenham Hale mainline station.

Note: if arriving by an earlier train for coffee/tea, one option would be the nearby YHA centre over the level crossing (but check they will be open on the day!). Peter

will meet you at 11.00 at the YHA entrance gate.

About 6 mile circular walk with a varied mix of waterways, lakes and meadows. Lunch stop in Waltham Abbey with cafés/pubs and option to finish. Leader: Peter Mackey, contact 07506 334 019.

Thursday 13th July. Regent's Canal. **Meet 10.30** outside the front entrance to King's Cross mainline station facing the Euston Road.

A 5 to 6 mile linear walk following the Regent's Canal from the refurbished area around the Granary Buildings, Coal Yard and ex-gas works before reaching Camden Market. Then towards Regent's Park, with a lunch stop in the St John's Wood area before visiting Little Venice. Walk ends near Paddington Station and Paddington Basin. Shorter options. Bring lunch or food available. Leader: Ian Reynolds, contact 07523 855 809.

Saturday 22nd July. Hertfordshire Rivers. **Meet 10.15** at Hertford North Station ticket office (09.48 train from Enfield Chase).

A 6½ to 7 mile circular walk with a varied mix of countryside and river scenes via the attractive historic town centre of Ware (lunch stop and option to finish). Bring lunch or food available. Leader: Stuart Mills.

Wednesday 26th July. The Welsh Harp and Fryent Country Park. **Meet 10.45** Hendon Station (10.18 Thameslink St Albans train from St Pancras International Station, platform B).

A 4 to 5 mile linear guided walk that will provide an insight into the wildlife and ecology of these open spaces. If available, recommend bringing binoculars. Lunch stop at the Birchen Garden Centre café. Walk will end at Preston Road Station (Metropolitan Line).

The Society will be joined by an environment and nature expert (Jesse Aberbach, see facing page) to give the group further information on these two important areas. Jesse is from Faithful+Gould, who are the consultants with Enfield Council's regeneration of the Joyce and Snell's estate in Edmonton, and are working with The Society as part of their community engagement. Leader: John West, contact 07904 193 098.

Tuesday 1st August. Epping Forest. **Depart 10.45** from Chingford bus station (313 bus from Enfield or by London Overground).

Heritage walks

Janet McQueen

About 2½ hour walk through attractive and constantly changing Forest scenes and open spaces with some long distance views.

Route ends near the Royal Forest Hotel/ Butlers Retreat with the opportunity for lunch/refreshments and/or a visit to the historic Royal Hunting Lodge and the excellent Forest Information Centre. These are within a 10 mins walk of Chingford Station. Leader: Stuart Mills.

Thursday 10th August. Mimram Valley. **Meet 10.35** Welwyn North Station ticket office (10.00 Thameslink Royston train from Finsbury Park mainline station or at 10.13 from Potters Bar Station).

About 6 mile circular walk with attractive views, woodland and village greens. Mainly gentle slopes but one steep hill. No shorter option. Lunch stop in Tewin village. Bring lunch or food probably available from pub and/or community shop/ café. Leader: Mick Spinks.

Friday 18th August. Barnet's Green Belt Countryside. **Meet 10.45** near *The Orange Tree* pub on Totteridge Green, Totteridge Lane. Public transport access by 251 bus from Arnos Grove Station (251 bus frequency about every 12 minutes with a journey time of 15 minutes). Some limited car parking in side roads to the north of Totteridge Lane, but *please do not park in pub car park*.

About 6 mile rural walk in attractive countryside linking the Folly and Dollis Brook valleys with the ridges of Totteridge and Old Mill Hill villages. Views across London and several notable buildings. Shorter option from the lunch stop in Mill Hill Village by using bus to Mill Hill East Station (Northern Line), and also later, when the walk crosses the 251 bus route. Bring lunch or pub food probably available. Leader: Nigel King, contact 07973 747 454.

Bank Holiday Monday 28th August. Richmond Park and River Thames.

Depart 11.00 from the entrance foyer to Richmond Station. Either 20 to 30 minutes journey time from Vauxhall mainline station, or about 50 minutes by London Overground from Highbury & Islington.

A 6 to 7 mile circular walk via the contrasting scenery of Richmond Park and The Thames. Option to finish from the lunch stop at Ham Common. Bring lunch or food available. Leader: Mike Cranstone, contact 07597 122 554.

This year we will be providing four heritage walks given by two of our members: Sue Grayson Ford, a London Blue Badge tourist guide and Society Trustee and Joe Studman, who will be well-known to many members. The Society warmly thanks them for offering their services.



Saturday 10th June, 11am. A circular walk of Enfield Town including a guided tour of the nationally important collection of historic monuments in St Andrew's church with Sue Grayson Ford.



Tuesday 11th July, 7pm. A walk looking at the 400-year history of the New River and its Royal connections. Led by Sue Grayson Ford it includes a talk by joint President, Colin Pointer, in the Tudor Room.

Sunday August 6th 2pm. A walk round Enfield Island Village. Once the home of the Royal Small Arms Factory that placed Enfield on the world map, there is still some evidence of the activities once carried out here. On this walk you will discover the history of the site pre, during and post Ordnance. Led by Joe Studman.



Sunday September 10th 2pm. A look at Palmers Green. We will discover the history and development of the Lakes Estate, Broomfield House and Park, the Town Hall and library, Truro House (above) and finish with the Suffragettes at the Triangle. Led by Joe Studman.

These walks are free to Enfield Society members. Any non-members who wish to attend are welcome at a cost of £10 which will include membership of the Society until the end of December 2024.

To book please send an e-mail to visits@enfieldsociety.org.uk The starting point for each walk will be provided after your booking has been received. Numbers are limited and booking is on a first-come first-served basis. *Photos: Andrew Lack/Enfield Society*

Jesse Aberbach

Jesse worked as a Ranger on Hampstead Heath while studying Geography at university. She completed a traineeship with the London Wildlife Trust and now leads conservation volunteer groups and community ecology workshops with the charity Heath Hands. She is interested in how the natural world has been represented in art and literature and the link between historical landscapes and ecology. Jesse is working on her bird identification skills and is a member of the Brent Birders group.

She has recently taken on an additional role as a Social Values Coordinator with the consultancy company Faithful+Gould. This role enables her to use her knowledge and experience by volunteering her time for community activities in the boroughs where the company has contracts to deliver.

Jesse will be joining the walk on 26th July (details opposite) to provide expert information on the environment.



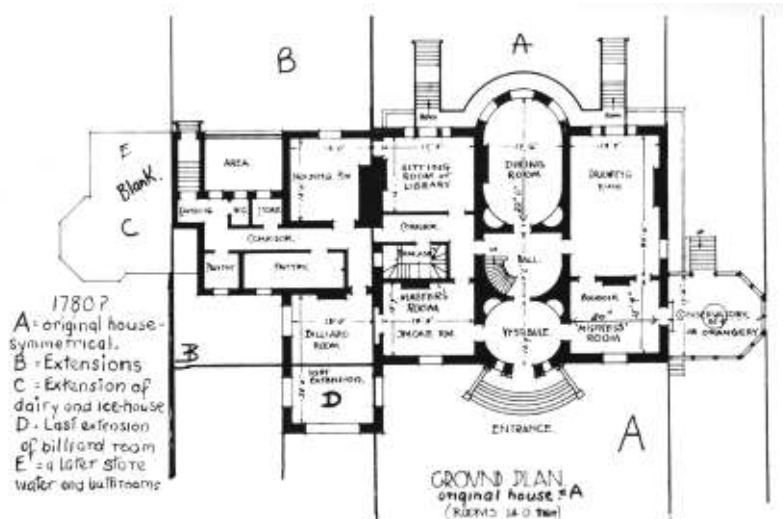
Jesse (right) on a community bug education walk on Hampstead Heath

Southgate House, Southgate High Street

Stephen Gilbert

A late 17th century map shows a brick house, built in the style of Inigo Jones, on the site of the present Southgate House. There were several small buildings nearby and Southgate village to the south had developed around The Green, the Cherry Tree Inn, the Weld chapel and Arnolds (replaced by Arnos Grove in 1719). (See newsletter 219, Autumn 2020.)

In 1749 the estate passed to the Pole family. In 1776 Charles Pole died and Samuel Pole inherited the house and surrounding land. Between 1780 and 1800 he built a double-fronted symmetrical neo-classical stock brick house. It was two storeys high topped with a parapet and intermittent balustrading. The slated mansard roof had dormer windows. The architect is not known but appears to have been acquainted with the work of Robert Adam.



Plan of the ground floor of Southgate House showing the original house marked A and later extensions marked B, C, D and E



North-west entrance front of Grade II* listed Southgate House, seen here in 1987

The north-west front had three bays with, in the centre, a curved flight of six stone steps flanked by ornamental lamp standards. The entrance was in a convex stone wall with four slender Tuscan columns and an entablature surmounted by a wrought iron balustrade. (The entrance has similarities to Millfield House—see newsletter 181, Spring 2011.)

The front door opened on to a spacious oval hall which in turn led to the curving main staircase extending up to the first floor and which was lit from a lantern above.



Doorway and alcove in Entrance Hall. (The crest of Minchenden School, with the Minchenden Oak quartered with the crown and three scimitars of Middlesex County Council, is above the door.)

To the left of the Entrance Hall was the Master's Room or Smoking Room which led through to the Sitting Room or Library on the south-east side of the house. To the right of the Entrance Hall was the Ladies Boudoir, which had a fine fireplace and adjoined the Conservatory or Orangerie.



Detail of moulded plaster decoration showing a cupid and foliage in the Ladies Boudoir.

Doors led from the Boudoir through to the Drawing Room which had rustic scenes over the doorways. The walls were divided into panels by plaster mouldings which may have been covered with silk brocade or may have had scenes painted on them similar to those in the Birdcage Room at Grovelands (see newsletter 217, Spring 2020). China cabinets were placed in the alcoves.



South-west and south-east fronts of Southgate House as seen from the ha-ha. This sunken wall separated the lawns and gardens from the park and home farm and prevented animals from encroaching on to the lawns and gardens, without interrupting the view from the house.

Between the Drawing Room and the Sitting Room was a fine oval Dining Room featuring a pair of fine carved oak dumb waiters.

In the centre of the south-east front was the curved bay of the oval Dining Room. It had full-height sash windows with glazing bars. The windows originally opened on to a narrow terrace. To the left and right the Drawing Room and the Sitting Room had fine stone fronted Venetian windows set in round arched recesses. The windows originally opened on to steps which led down to the lawns and gardens. The stone area wall in front of the basement had cast iron railings at intervals.

The first floor housed the family bedrooms, dressing rooms and nursery, with the female servants bedrooms being in the attic. The basement rooms included the servants hall, kitchen, house-keeper's room, cellar, larders and storerooms.

Soon after the house was completed it was extended on the north-east side. On the ground floor were a morning room with a Venetian window facing south-east, a billiard room, pantries and storerooms. Before indoor water closets were installed, water was brought into the house from a well in cans, and commodes and outdoor earth closets were used. Additional bedrooms and a bathroom were provided on the first floor with more female servants bedrooms in the attic. A scullery, butler's pantry, storerooms, a coal storage area and, later, water closets were added in the basement.



The Dairy

In the 1790s an octagonal Dairy, with a rectangular louvered ventilation turret, was added to the north-east end of the house and an underground ice-house was constructed.

According to the General Enclosure Act of 1801 the estate also included an orchard, a paddock, lodges, walled fruit and vegetable gardens, a granary, a copse, shrubberies, the Woolpack Inn and a row of cottages. The octagonal timber granary was constructed on saddle stones to keep out the rats. This interesting listed building unfortunately burned down. A similar granary can, however, still be seen at nearby Grovelands (see newsletter 217).

Samuel Pole died in 1802, but the estate was controlled by trustees until Isaac Walker bought it in 1840. Isaac Walker died at Southgate House in 1853, shortly after inheriting Arnos Grove. (Arnos Grove is covered in newsletter 177, Spring 2010.)

As the members of the Walker family lived at Arnos Grove, Southgate House was rented to tenants. Sir John Lawrence (Lawrence of the Punjab) took up residence with his family, his sister and his niece in 1862. The estate had 60 acres and he kept

Local Studies Library & Archive



Stables and Coach house with Dormitory for the the grooms and other male servants above. Photographed in 1970

cows, sheep, pigs, poultry and horses. Croquet was played on the lawn and on Saturdays and Sundays he would drive around the neighbourhood and his estate. On Sunday evenings he held a service at home and told tales of life in India. Sir John left in 1864, when he was appointed Viceroy of India, and was followed by his wife and older children in 1865. The younger children were looked after by his widowed sister Letitia Hayes until her death in 1866. He erected a stained glass window in her memory at Christ Church, Southgate (see newsletter 179, Autumn 2010). The remaining members of the family later moved to South Kensington where they were joined by Sir John on his return to England in 1869.

Later tenants included Mr Armitage, from 1876, who travelled by steam train from Palmers Green station to work in the City, J.N. Mappin (of Mappin & Webb) and C.H. Feiling, a member of the Stock Exchange Council.

In 1918 the 75 year old Russell D. Walker sold the Arnos Grove estate to the shipping magnate Lord Inverforth. Following Russell Walker's death in 1922, the Southgate House estate was sold off by his heirs. Land between Southgate High Street and The Bourne was bought by J. Edmondson and Son, who constructed The Meadway estate in the 1920s and 1930s (see newsletter 196, Winter 2014). Southgate House, with its entrance lodge, stable buildings, glass houses and 20.5 acres of park and gardens, was sold to Middlesex County Council for £16,000.

Southgate House became Minchenden School in 1924, with places for 200 boys and girls. The grounds became playing fields for the school. The school had been founded as Tottenhall Secondary School in 1919. The new name was taken from the 800 year old Minchenden Oak in the grounds of Arnos Grove. The word is thought to derive from *mychen*, meaning nun, because there was a nunnery on the site of Broomfield House and the surrounding area in medieval times (see newsletter 211, Autumn 2018).

The existing buildings were adapted for use by the school. The stables were converted into a chemistry and physics laboratory, with the art room in the loft above. The conservatory was demolished and replaced by a hall, which later became the gymnasium. In 1932 a new building was opened, providing 12 classrooms, a domestic science room, a woodwork room, two new laboratories, staff common rooms, a medical room and a new large hall with a stage. During the Second World War air raid

continued first column next page

*Southgate House,
continued from previous page*

shelters were constructed, staff operated a fire watching rota and the paddocks were used as allotments. Further extensions were made to the school in 1956–7.

In 1960, after Southgate County School moved to Sussex Way, Cockfosters, its former building in Fox Lane became the lower school for Minchenden. Following the reorganisation of local government in London in 1965, the London Borough of Enfield took responsibility for education locally. Secondary education was reorganised and Minchenden became a comprehensive school in 1967. In 1984 it merged with Arnos School. The new school was renamed Broomfield and the old Minchenden building in Southgate House was closed.

After 1987 Southgate House became part of Southgate College and was known as the Minchenden building. Enfield Council sold the former Minchenden Upper School's playing fields to Fairview New Homes plc, who built 258 houses and flats between 1993–5. The 1930s Minchenden School buildings are now occupied by Durants Special School. There were plans to convert Southgate House into residential accommodation, but it has now been sold to the Southgate Mosque and Community Association.

A bibliography used for the preparation of this article can be found on our website. Illustrations are reproduced from *Minchenden School Golden Anniversary 1919–69* unless otherwise stated.

Council projects shortlisted for prizes

The website thedeveloper.live has reported that two recent Council projects are in-line for a Pineapple Prize. The website explains these prizes *seek to recognise excellence in placemaking and urban renewal in the built environment, from community engagement to public space.*

The projects in line for recognition are the Fore Street Living Room Library in Edmonton (pictured below) and The Dugdale Arts Centre in Enfield.



Coach trip to Stratfield Saye, Thursday 20th July

Our coach outing this year will be to the Duke of Wellington's house, Stratfield Saye in Hampshire. After the battle of Waterloo a grateful nation awarded enough money for him to buy a house and estate worthy of a great national hero and he moved in to this modest country house in 1818. His descendants have lived here ever since, amongst a fascinating collection of paintings and furniture purchased by the great Duke giving the feeling he has only just left.

geograph.org.uk/wikipedia



We will leave Enfield about 8.45am, and have coffee and shortbread on arrival. There will then be a guided tour round the house, followed by lunch (included in the price). After lunch we will have plenty of time to visit the grounds and gardens, along with the Wellington exhibition charting his political and military life.

There is also a small gift shop and if time allows we may be able to visit the Wellington Farm shop after departing the house to arrive back in Enfield approximately 6pm.

Cost is £50 per person which includes lunch and coffee on arrival. If you prefer to bring a picnic then please pay £40.

The following options are offered for lunch:

Meat pasty and salad, or tomato basil and mozzarella quiche and salad or Ham or cheese ploughman's, pickles and salad. All include tea, coffee and water. Please confirm your choice when you book and state if you have any allergies or other dietary requests.

To book please either send a SAE to Coach Outings, Jubilee Hall, 2 Parsonage Lane, Enfield, EN2 0AJ and include a cheque made payable to "The Enfield Society" or e-mail j.mcqueen@enfieldsociety.org.uk and make a bank transfer to The Enfield Society, Account number 5036 3820, sort code 20 29 77, using your name and postcode for the payment reference.

In either case don't forget to say what you have chosen for lunch. Looking forward to seeing you in July.

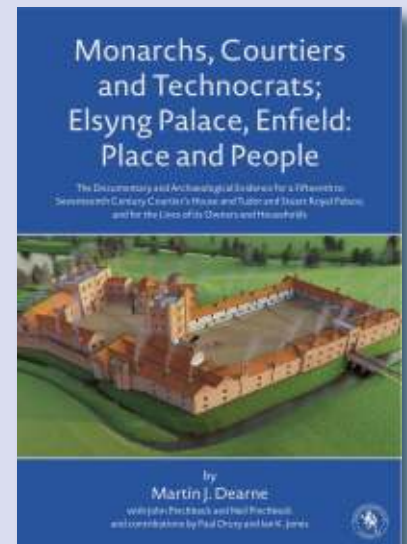
Janet McQueen

Society talks

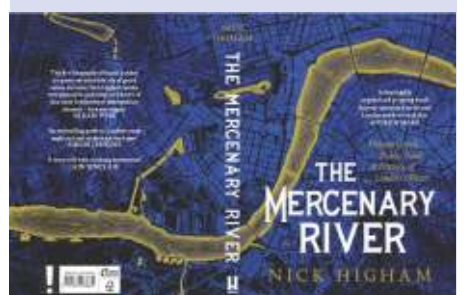
Jubilee Hall 8pm

Enfield Society talks are held at Jubilee Hall. No need to book—just turn up. Doors open at 7.30pm. Non members are welcome at our talks, £1 each.

Monday 15th May, 8pm. *Monarchs, Courtiers, Technocrats and Kitchen boys of Elsyng Palace* by Dr Martin Dearne. Following the publication of the results of 16 years of excavations and an extensive programme of historical research, Martin will speak about some of the many different people, from royalty down to lowly servants, who at different times were called courtiers at the then royal palace of Elsyng (in the grounds of Forty Hall) and how some of their lives were researched.



Monday 19th June, 8pm. *The Mercenary River* by Nick Higham. No city can survive without water, and lots of it. Today we take the stuff for granted: turn a tap and it gushes out. But it wasn't always so. For centuries London, one of the largest and richest cities in the world, struggled to supply its citizens with reliable, clean water. Nick's talk is based on his book, *The Mercenary River*, which tells the story of that struggle from the middle ages to the present day. *Note this is the talk which was originally planned for February.*



February meeting with Enfield Council

Richard Stones

In February 2023 a Society delegation met Sarah Cary (Executive Director Place), Brett Leahy (Director of Planning and Growth) and David Taylor (Head of Traffic and Transportation) for one of our regular meetings. Here are some of the issues we discussed.

Local Plan Update. The Council Officers explained that they would publish an updated Local Development Scheme by the end of March. [At copy date this had not yet appeared on the Council's website.] This would set out a revised timetable for progressing the Local Plan. A recent Scrutiny Meeting had decided to bring forward the Regulation 19 process (which provides an opportunity for representations to be made on the amendments to the Plan before it is examined by a planning inspector) to October.

A summary of the consultation submissions would be provided. LBE understood The Society's concern that this should include information about numbers of responses for and against specific issues.

The Cross-Party Group formed in response to the Council Meeting following the public petition was said to be making progress. There was a meeting scheduled for March.

Whitewebbs Park. We explained that our immediate concerns were about the outcome of the recent statutory consultation process and also the position on the Lease. In our view it was important to ensure

- transparency and clarity about Spurs' responsibilities and the public's rights. We felt that it was regrettable that the terms of the Lease had not been publicised in conjunction with the statutory consultation;
- some form of public involvement in the management of the open parts of the property.

Sarah Cary said that a response to the statutory consultation would be published. She expressed puzzlement about our concern with the Lease. A summary of its terms had been published with the Decision Notice following the Cabinet's approval of the Spurs transaction.

Our view is that the Lease was the right place to specify definitively how the area leased to Spurs was to be managed. Much was made of the need for Spurs to obtain planning consent, but planning conditions could be watered down by subsequent variations. We remained concerned that LBE would enter a binding Agreement for Lease before the Lease terms had been subjected to proper public scrutiny. The Society explained that we were producing a paper setting out our proposals for an archaeological investigation of the locally listed Conduit House in the Park.

Enfield Road, Jubilee Cottage. We are concerned about a planning application of Jubilee Cottage (a lone dwelling in the Green Belt on the north side of Enfield Road). It appeared that the Council's failure to provide traffic information for the planning appeal in relation to this development may have contributed to the appeal being allowed. LBE acknowledged that the Council's record on planning appeals was not what it should be. They had concluded that

- they were refusing schemes without applying enough scrutiny; and
- they were not robust enough in defending refusals on appeal.

They were looking to improve their success rate.

The Council explained that the appeal in question had been for "non-determination"—the Council had failed to make a decision within the required period. The Council was working to reduce the backlog of decisions. See also page 3, column 1.

Hollyhill Farm, The Ridgeway. A letter had been sent to local residents about proposals for landscaping, etc. The Council agreed to send The Society a copy on which we could comment. We emphasised the desirability of retaining and increasing agricultural activity in the Enfield countryside.

Dugdale Arts Centre. We expressed disappointment about the size of the Museum space in the The Centre and asked if there was any prospect of additional space being made available elsewhere to exhibit more of the Museum's artefacts. LBE said that they were thinking about having displays across the borough, for example in libraries.

Environment Forum—transport issues. We felt that there was insufficient time to discuss public transport matters at the Environment Forum. LBE explained that the Environment Forum was not an officer-led committee and that we should raise our concerns with the Chair. They suggested that we should raise public transport issues with officers. However, LBE pointed out that they relied on Transport for London (TfL) for answers to transport questions: TfL had agreed to provide answers, but the current TfL contacts were in the process of change. We reiterated the need for a forum to discuss these issues.

"Station Tavern", Brimsdown. We asked what progress had been made on addressing the major planning concerns raised by this development. The Council explained that the ball was in the applicant's court—it was up to the developer to propose modifications to their original proposals which would meet the Planning Team's concerns. Once it had done so the application would be put out for further consultation.

Footpaths/Cycleways. The Society pointed out that signage had still not been provided on the new path along the west bank of the Lea Navigation between Ponders End and Brimsdown. LBE agreed that not enough had been done about signage/wayfinding in the borough generally. They were hoping to secure funding for signage across the borough. They agreed to clarify the issue of multiple ownership of different stretches of the West Bank path.

We asked what steps have been made to provide an alternative, waterside, route for the Pymmes Brook Trail now that the gate at the back of Millfield House was normally locked. The Council explained that it was a police recommen-



dation to keep the gate closed because of unsocial behaviour and they could not envisage this position being changed. [The gate can be opened on request at Millfield House.] We pointed out that the Pymmes Brook Trail was a widely-publicised walk and that it was not satisfactory that users should simply find it blocked at this point—at the least there should be signage of an alternative route before reaching the gate. The Council agreed to consider a longer-term alternative route.

Enfield Town public realm improvements. TfL funding would be available for the proposed projects for improvements to four public spaces in Enfield Town: Library Green and Town Park entrance; Fountain Island; Enfield Town Station Plaza; and a proposed new public square at the junction of Little Park Gardens and Church Street. But the funding would become available over a longer period than originally envisaged. It was likely that all four projects would go ahead, but in stages—the order had not been decided.

Society Directory

Joint Presidents: Colin Pointer, Monica Smith MBE

Vice Presidents: Janet McQueen, Matthew Saunders MBE, Alan Skilton, Leonard Will


Chairman: Dave Cockle


Hon. Secretary: Richard Stones


Hon. Treasurer: Tony Foster


Management Committee: Dave Cockle, John Cole, Sue Grayson Ford MBE, Anna Maria Foster, Tony Foster, Robert Fowler, Stephen Gilburt, Andrew Lack, Jan Metcalfe, Stuart Mills, Hilary Morris, Val Munday, Richard Stones, John West, Alison Yates.

Office: Jubilee Hall, 2 Parsonage Lane, Enfield EN2 0AJ
Telephone: 020 8363 9495
Messages left on this number will be dealt with as promptly as possible.

 enfieldsociety.org.uk

 facebook.com/enfieldsociety

 Twitter @enfiefdsoc

 Instagram @enfieldsociety

How to contact us

To contact our specialist groups either use the contact given or use our general enquiries e-mail:
info@enfieldsociety.org.uk

Architecture and Planning: John West, 020 8886 6080

Cleaner Neighbourhoods Group: Alison Yates

Conservation & Heritage Group: John West

East Enfield and Edmonton: Dave Cockle

Footpaths and Open Spaces: Stuart Mills

Green Belt: Dave Cockle, 020 8366 2242

IT Admin & Newsletter: Andrew Lack

Jubilee Hall bookings: Janet McQueen

Membership Secretary: Alec Tyler

Publications: Alison Parker

Records and Research: Hilary Morris, 020 8372 3080

Station Gardens: Enfield Chase: Dave Cockle, *Gordon Hill:* John Cole

Trees: John West

Volunteer Coordinator: Claudia Deutschmann

The Enfield Society is a registered charity in England & Wales No. 276451 and limited company No. 312134.

Printed by Solopress, Southend

ISSN 2042-1419 (print edition)

ISSN 2042-1427 (web edition)

Hertford Loop celebrated in new book

John Cole

The Friends of Gordon Hill Station and the Edmonton Camera Club have produced a lavishly illustrated Photo Album featuring over 80 photographs of the Hertford Loop Line.

The idea for a project to capture stations on the line from Bowes Park to Hertford North came from Duncan Primrose, Station Manager for the Hertford Loop, following an earlier exhibition of the Club's work at Gordon Hill in 2021.

In May 2022, 13 photographers from the Edmonton Camera Club toured, with permission, the various stations to take images throughout a single week, representing the various activities focused on the Great Northern managed railway line. The photographers captured life from the quietest of times to the busiest of times, from the first train to the last. It includes bridges, viaducts, cafés and many different trains, travellers and staff.

The book has been sponsored by The Enfield Society and Great Northern and is to be launched on 1st May priced £20. It will be available from *Luv Coffee* at Gordon Hill station and FriendsofGordonHillStation@gmail.com. The photographers were top: Andrew Ridley, middle: Roland Bermel (left), Malcolm Rapiel (right) and bottom (both) Nick Clark.

