



Enfield Council powerless to control office-block conversions

Another office block in Enfield to be converted into sub-standard housing

John West & Bill Wilson



In the Winter newsletter, Matt Burn explained why we need an 'Article 4 Direction' in Enfield to ensure more effective planning control over the conversion of office buildings into residential accommodation. At present, permitted development rights allow these conversions to avoid the detailed scrutiny of a normal planning process resulting in substandard, poor quality accommodation.

At Enfield's November Planning Committee, a 'Prior Notification' was considered to change the use of the major part of Refuge House, Riverfront, Enfield from offices to 76 self-contained flats. There was considerable opposition to this proposal based on the small size of the residential units, increased traffic caused by deliveries and servicing requirements, lack of open space and the strain on local facilities. However, because of the current legislation, these concerns cannot be taken into consideration under the permitted development rights criteria. Class O of the Permitted Development Order 2015 allows the submission of a prior notification to change the use of an office building to become a residential building. There are only very limited exceptions such as the building being a listed building.

This story was reported by The Enfield Independent as long ago as July 2019. Then the proposal was for 52 studio flats, the smallest of which would have been only 23.4m². Compare this with the national space standard recommended for new studio flats of 37m². By November the situation was that more than 33% of

the proposed 76 studio flats would be a third smaller than the minimum recommended.

It is feared that many of the units will be poorly ventilated, with limited natural daylight and no outdoor space. It seems likely that the building will be used to house vulnerable people requiring temporary accommodation.

A well-publicised campaign was run by Better Homes for Enfield encouraging local residents to object to the proposal. The Enfield Society lodged an objection to the conversion.

Based on legal advice that a refusal to grant consent would almost certainly mean that the Council would lose in the event of an appeal, the Committee approved the proposal. This highlights the urgent need to proceed with an Article 4 Direction and the Society will continue to press the Council on this matter. In order to obtain the Direction, Council officers are currently gathering the necessary evidence to present to the Government.

Soon after the Planning Committee's decision, the developer submitted a revised proposal for 90 units. The planning application shows that several will only be 17m² or roughly the size of 1½ car park spaces. Only eight of the units appear to have access to a fire escape. Despite these conversions being possible without formal planning consent, they are subject to Building Control. Better Homes for Enfield told the Enfield Society that in the end over 100 units were likely to be created.

Chairman's Column

Dave Cockle



I would like to thank the Council's Enviro-Crime Department for its prompt and effective action in removing unwanted free newspaper stands off the street. The "Enfield & Haringey Independent" had, without permission, placed these stands on the pavement outside several of the Borough's busier railway stations. Whilst keen to support local journalism, the news stands were adding to street clutter, as well as generating litter. The "Independent" has ceased employing distributors for mail box deliveries and, understandably, wanted to maintain their circulation numbers. News stands are fine inside supermarkets and public buildings, but when left out on the street there is no ownership, thus incurring the problems described above.



Newspapers spilling out from the stand outside Enfield Chase station

At the start of a new year and decade the need for an effective Civic Amenity Society such as ours has never been more pressing. With the pressure on affordable housing needs and the unfortunate sub-standard accommodation often provided by office conversions (see front page) we must maintain our stance of challenging the worst excesses of development. Our Architecture and Planning Group meet regularly. They work hard in scrutinising planning applications and making constructive comments to planning officers.

My I take this opportunity of thanking all our volunteers, without whom the Society would cease to function. If you know of anyone who might like to come forward to help in any way, please do not hesitate to advise any of our sub-group contacts via the Society's Directory on the back page.

Enfield Society heritage projects

John West

At the end of 2019 Enfield Council launched a search for heritage projects from across the borough. The money for projects will come from The National Lottery Heritage Fund which has announced that Enfield will be one of thirteen areas across the country where it will help applicants meet local needs. The Council wishes to plan how it manages heritage, as this will shape how it will develop new places, enhance existing areas and recognise the heritage of the communities.

The Enfield Society's Architecture and Planning Group have taken the lead in responding to the Council's call and has drawn up a list of eleven:

1. Provision of information boards at the Angel Edmonton or Silver Street Station. The area has a fascinating history being a crossroads on the historic route to Hertford, a toll gate, an ancient inn and links to the story of John Gilpin, a comic ballad written in 1782 by William Cowper.
2. Relocation of the Fore Street War Memorial. The memorial is important to local people. It was moved during a previous highway scheme and was placed in an inappropriate place on the footway in front of the shops. Holding any commemorative event in this location is impossible. [See also page 10]
3. Pymmes Park history trail. The park is a beautiful oasis of calm in Edmonton just north of the busy North Circular Road, with lakes formed by diverting Pymmes Brook. It is well used and has a busy children's play area. The Park is the grounds of the former Pymmes House, which was demolished after a fire during the Second World War.
4. Through the planning process Beavertown Brewery has agreed to provide history boards about the rich industrial heritage of Ponders End. This project would seek to involve the local secondary and primary schools in developing the history story.
5. Restoration of Tottenham Park Cemetery Chapel. The cemetery forms part of the Montagu Road Cemeteries Conservation Area. Tottenham Park Cemetery opened in 1912 and was initially used for Christian burials; it is now predominantly Muslim. The Chapel is on the Enfield Local List and is in a derelict condition.
6. Creation of a mosaic mural of Enfield Palace. Enfield Palace was a substantial

manor house, largely rebuilt for Queen Elizabeth I when a girl by her half-brother, King Edward VI. Although Elizabeth did not spend long at the palace once she was queen, she did stay to hunt in the nearby park. From the seventeenth to the nineteenth century the palace was used as a private school. It was demolished in the early twentieth century and a department store now occupies the spot.

7. A bridge over the New River to provide access to Clarendon Arch. Clarendon Arch and Tunnel is a Grade II listed building. It is the oldest surviving structure on the New River, comprising a short brick tunnel that allowed Salmons Brook to run beneath the New River. A viewing platform was created by Thames Water about 20 years ago, but due to land ownership changes it is no longer accessible. [See newsletter 216, Winter 2019, page 4.]

8. Restoration of the Lodge to the former Durants Arbour. Durants Arbour was a large moated manor house, built around a courtyard to the east of Hertford Road on higher land above the Lea Valley north of Ponders End. Durants Park is named after Durrants, a sub-manor of the Enfield Estate dating from the 13th century.

9. Restoration of the Water Gardens at Trent Park. Major refurbishment of the Mansion House and surrounding gardens is in progress. The Water Gardens are outside this area and form part of the country park. The area would benefit from footpath improvements, disabled access and information boards.

10. Layers of London Project; Public Houses in Enfield. The Heritage Lottery Fund is supporting a project led by the University of London's School of Advanced Study to put London's pubs onto an interactive online map. Enfield has lost many historic pubs since World War II and supporting this project would ensure that Enfield is fully included in the project.

11. The installation of information plaques on buildings which are historic or of interest for their association. The Enfield Society has previously provided brass plaques to Listed Buildings of local interest. This project would extend this work creating a local 'Blue Plaque' trail to key points of interest around the Borough.

You can find more details about our ideas at enfieldsociety.org.uk/heritage-projects

Major planning developments

John West & Bill Wilson

Southgate Office Village

As previously reported, this is a controversial scheme involving the construction of residential tower blocks immediately to the north of the Southgate Circus Conservation Area with its Charles Holden designed tube station. One of the blocks would be 17 stories high.



How the proposal would look viewed from Southgate Circus

The scheme has been developed in response to the draft Enfield Local Plan and the London Plan that seek to promote residential development at transport hubs, thereby reducing the need for car use and helping to protect sensitive areas such as open spaces and the Green Belt from development. In principle, the Society supports this approach, but we also consider that it needs to be developed in conjunction with a borough-wide high buildings policy that would protect sensitive locations such as Conservation Areas, historic buildings and certain long distant views from inappropriate development.

A Planning Panel to consider this application originally planned for November was deferred due to the general election. The Planning Panel was subsequently re-scheduled for the 23rd January, to provide an opportunity for local residents, community groups and other interested parties to hear further details about the scheme and express their views prior to its being considered by the Planning Committee. The meeting was open to all residents.

Members are encouraged to object to the proposals but any objections should be on planning grounds rather than a general dislike of the proposal.

Transport for London Car Parks

TfL are proposing to redevelop the tube station car parks at both Arnos Grove and Cockfosters. As a major landowner, TfL is seeking to use some of its land to build affordable homes. By making use of a number of station car parks across

London, TfL are also seeking to support the Mayor's Transport Strategy by promoting more sustainable and healthy travel choices, reducing vehicle trips in busy areas and improving air quality.

In November, a public exhibition relating to the Arnos Grove proposals was held at Garfield Primary School, close to the station. About 300 parking spaces will be lost leaving only places for Blue Badge holders and, subject to consultation, car club spaces. The housing scheme is stepped with three storeys close to the tube station rising to six storeys at the rear with a mixture of 1, 2 and 3 bedroom build-to-rent homes. A landscaped square is proposed to the west of the tube station.



View looking North across the proposed Station Square

The Society is particularly concerned that any development should preserve the setting and heritage of the Grade II* Listed Charles Holden-designed tube station, especially given that he promoted high quality modernist design. To respect the building's very careful detailing, the selection of materials and colours will be critical. The Society will monitor the design development as the plans progress.

We are also very aware that a number of local residents are opposed to the loss of car parking places. However, given the Mayor's priorities in the London Plan, we believe that comments and objections need to focus on the design rather than the loss of car parking.

At Cockfosters tube station the same design team and consultants are working with TfL to provide homes for rent. A public exhibition was held at Christ Church, Cockfosters immediately before this newsletter went to print.

The consultation proposals include some high rise development that will have an impact on both the tube station and views from Trent Park. Local residents are extremely concerned about the proposals and the Society will look very carefully at the proposals in consultation with other groups before submitting comments on any future planning application.

Serious tree loss at Clay Hill

Several members contacted the The Enfield Society in November to raise concerns over the felling of a large number of trees at Clay Hill on the property known as Kingswood. This is on the left as you walk the footpath from St John's Church down to Hilly Fields.



Kingswood, looking eastward from the public footpath

The Enfield Society raised this at its last meeting with the London Borough of Enfield who confirmed they view the matter as serious and are taking enforcement action with a view to prosecution.

Independently, The Enfield Society was contacted by a local resident who is acting as an advisor to the new owner on matters of environmental, landscaping and agriculture. The letter offers to meet with the Enfield Society to discuss the project, which includes the land further west known as Queenswood.

We were contacted in November by the new owner who has also offered to meet The Enfield Society. We have replied indicating a willingness to meet, but at present no meetings are in the diary, either with the new owner or his advisor.

Andrew Lack

Notice of Enfield Society AGM elections

Any Society member is entitled to propose candidates for election to the Management Committee at the AGM. A proposal must be signed by the candidate and by at least ten members supporting the proposal and must be delivered to the Secretary at Jubilee Hall so as to be received not later than 1st May 2020. If you wish to propose a candidate I would encourage you to contact me beforehand to make sure that the correct procedures are followed. The AGM will be on 11th June. A formal notice will appear in the next newsletter.

Richard Stones

Society Guided Walks

Stuart Mills

Travel details are correct at press date but TES cannot be responsible for alterations. Always check for rail changes, especially at weekends (either via 03457 48 49 50) or the train company's own web-site). Use TfL web-site for tube, DLR, London Overground and TfL buses (or ring 0343 222 1234).

Groupsave discount of about 34% is available on most non-TfL trains but is not usable with any Railcards.

See TfL/National Rail publicity maps for Freedom Pass boundaries and Oyster/Travelcard zones and always bring your card(s). County Council web-sites display current bus timetables for non-TfL services.

Please wear walking boots or stout walking shoes and, always, either remove muddy boots or cover them with plastic bags before entering a pub or tea shop.

Sat 15 Feb. North Mymms Snowdrops. Meet **10.25** outside White Hart pub, South Mimms Village (10.13 84 bus from Potters Bar Station). *Please do not park in the pub car park.*

A morning walk in memory of Roy Nicholls' last outing that, hopefully, will coincide with the extensive snowdrop display. Depending upon weather conditions, the walk will be between 4¼ and 5¼ miles in length and may be muddy in places. We hope to return and finish in South Mimms by 13.30. *Contact on day of walk only:* 07490 480 251 (no voicemails). Leader: Stuart Mills

Thurs 20 Feb. Rural London. Depart **11.00** from outside café/toilets at Kenwood House, Hampstead Lane NW3. About 30 mins by 210 bus from Finsbury Park Station—Wells Terrace bus station.

A surprisingly green linear walk linking Hampstead Heath and Hampstead Garden Suburb with the Dollis Brook Trail towards Barnet. Maximum distance about 7 miles but shorter options by either bus or from Northern Line stations, including from Finchley Central lunch stop. Bring lunch or food available. Leader: Mick Spinks

Sat 29 Feb. West London Open Spaces. Meet **10.30** Ealing Broadway Station (about 30 mins by Central Line from Oxford Circus). Toilets on station platform. *No Great Northern trains today.*

7½ mile linear walk via Walpole, Gunnersbury and Chiswick Parks, all with historic houses, ending at Turnham Green Station. Shorter options. Lunch stop near Kew Bridge/Strand on the Green. Bring

lunch or food available. Contact: 07904 193 098. Leader: John West

Thurs 5 March. Discovery Walk: Londinium. Meet **10.45** Tower Hill Station (Circle and District Lines).

About 5 to 6 mile linear walk which includes some surviving Roman remains and shows how the Romans continued to influence the City for centuries. Route ends in Leadenhall Market. Many shorter options. Lunch stop at The Museum of London which has Roman displays. Bring lunch or food available. *Contact on day of walk only:* 07425 136 628. Leader: Margaret Redman

Wed 11 March. Two walks over the Northern Heights. Meet **10.20** Alexandra Palace Station ticket office (10.03 train from Enfield Chase).

About 2¼ hour linear walk via the Palace grounds and the disused railway path to Highgate Wood and then into Highgate Village for lunch stop and option to end. Bring lunch or food available. After lunch about 1½ to 2 hour linear walk across Hampstead Heath, ending at a point for return transport. Leader: Mick Spinks

Thurs 19 March. River Thames Scenes. Depart **11.10** from Tate Britain Gallery's Manton entrance in Atterbury Street (*not* from the main entrance fronting Millbank and The Thames). About 10 mins signed walk from Pimlico Station (Victoria Line). Note: the Gallery opens from 10.00, has free admission, and within the Manton entrance are toilets and a café.

About 2½ hour linear walk via Battersea Park, Chelsea and Chelsea Harbour with an attractive mix of gardens, historic and modern buildings and The Thames. Lunch stop at a large supermarket café with option to end at nearby Imperial Wharf Station (London Overground). For those bringing own lunch there are nearby gardens but without any shelter.

After lunch about 1¼ hour linear walk with varied river scenes, ending at Putney Bridge Station (District Line). *Contact on day of walk only:* 07506 334 019. Leader: Peter Mackey.

Sat 28 March Royal Parks. Meet **10.30** near station exit into Green Park at Green Park Station (Victoria, Piccadilly and Jubilee Lines).

About 6 to 7 mile walk with an attractive mix of parks in early Spring, conservation areas and historic buildings via Green Park, Hyde Park, Kensington Gardens, Holland Park and Campden Hill, ending at a tube station. Lunch stop in Kensington Village (food available or

bring lunch). Many shorter options. *Contact on day of walk only:* 07490 480 251 (no voicemails). Leader: Stuart Mills

Thurs 2 April Architecture, Statues and River Thames. Meet **11.00** Stamford Brook Station (District Line: 20 mins from Victoria).

4 mile linear walk, initially via one of London's least known but perhaps prettiest garden squares. With a coffee stop, then a riverside walk with interesting architecture from the last two centuries, ending at Fulham Palace (free admission). Nearby are lunch facilities and return travel options from Putney Bridge (District Line) or Putney (mainline) Stations. Details: 07973 747 454. Leader: Nigel King

Easter Sun 12 April. Two Walks in Enfield's Countryside. Meet **10.30** Oakwood Station (Piccadilly Line or 121 and 307 buses) for about 5½ mile linear walk via Trent Park, Merryhills Way, London Loop and Jubilee Path to then re-enter Trent Park for lunch stop at Trent Park café and option to finish. Bring picnic or use café.

For the afternoon's 4 mile linear walk be at Trent Park café by 13.30. Route goes via Monken Hadley Common to end at High Barnet for either return by 307 bus to Enfield or Northern Line. Note: some sections of both walks may be muddy after prolonged rain. Joint walk with Hampstead Ramblers. Contact: 07590 604 391. Leader: Hadi Samsami

Sat 18 April. London Loop. Meet **10.38** Hayes (Kent) Station (10.01 Southeastern Hayes train from London Bridge mainline station—usually from platforms 1-5).

About 9 mile linear walk to Hamsey Green via an attractive mix of woodland, heathland, farmland and pastures with long distance views across London. Several shorter options using buses or trams to travel to East Croydon or other mainline stations. Bring lunch in case pub food not readily available. Contact: 020 8882 3602 or 07534 433 578. Leader: Martin Langer

Wed 22 April. New River Walk. Meet **10.03** Hornsey Station (09.48 train from Enfield Chase or short ride by 41 bus from Turnpike Lane Station).

8 mile linear walk following the New River with an intriguing mix of urban and semi-rural scenes via Woodberry Wetlands, Clissold Park and Canonbury to end at New River Head (Rosebery Avenue) for buses/tube. Shorter options. Potentially some muddy sections in

Walks

Continued

morning. Bring lunch or food available. Contact: 07904 193 098. Leader: John West

Thurs 30 April. Hidden London. Meet **10.45** Blackfriars Underground Station (Circle and District Lines or by Thameslink services at 09.52 or 10.08 from Finsbury Park mainline station). 5 to 6 mile circular walk including famous landmarks and some lesser known areas in the western part of the City of London. Many shorter options. Bring lunch or food available. Leader: Ian Reynolds

Thurs 7 May. Mimram Valley. Meet **10.30** Welwyn North Station ticket office (10.00 Thameslink Cambridge train from Finsbury Park mainline station or at 10.13 from Potters Bar Station). About 7 mile circular walk with attractive views, bluebell woods, village greens and river valley scenes. Hilly in places. No shorter option. Lunch stop at Tewin. Bring lunch or pub food/community shop tea room. Leader: Mick Spinks

Wed 13 May. Discovery Walk: Inns of Court and Fleet Street. Depart **10.30** Temple Station (Circle and District Lines). About 2½ hour linear walk exploring this fascinating area which still remains an integral part of the legal profession but no longer a centre for newspapers. Shorter options. Route ends near St Paul's Cathedral with many lunch facilities nearby. Leader: Sara James

Sat 16 May. Stort Valley. Meet **10.08** Sawbridgeworth Station (09.40 Greater Anglia Cambridge train from Tottenham Hale or at 09.48 from Cheshunt—for latter connection use 09.14 London Overground train from Southbury Station). *Note:* buy off-peak day return to Bishop's Stortford.

In morning about 5 mile linear walk via riverside path, nature reserves and attractive countryside near Little Hallingbury and Wallbury hillfort. Lunch stop and option to end in Bishop's Stortford town centre. Bring lunch or food available. Then a 3 mile circular walk discovering the town's historic buildings and parks. Contact: 07904 193 098. Leader: John West

Wed 20 May. Discovery Walk: Black Path. Meet **10.45** Black Horse Road Station (Victoria Line). About 5 mile linear walk exploring the Walthamstow Black Path, an old drover route from the Lea Valley pasturelands into City markets, ending at Spitalfields. Coffee/toilets stop en-route. *Contact on day of walk only:* 07425 136 628. Leaders: Joe Studham, Margaret Redman

Bank Hol Mon 25 May. Chilterns.

Depart **10.40** Amersham Station. Either 09.57 Chiltern Railways Aylesbury train from London Marylebone Station, or 09.26 Metropolitan Line train from King's Cross St Pancras. *Note:* Met Line may be subject to engineering works.

About 7 mile linear walk via Old Amersham and the Misbourne Valley, ending at Chalfont & Latimer Station. No shorter option. Lunch stop in pretty Chalfont St Giles village. Bring lunch or food available. Contact: 07900 286 254. Leader: Mike Cranstone

Sat 30 May. Hampstead Heath and late Spring gardens. Depart: **10.45** from outside café/toilets at Kenwood House, Hampstead Lane, NW3. About 30 mins by 210 bus from Finsbury Park Station (Wells Terrace bus station).

About 7 mile linear walk across the Heath and environs to include some of the varied gardens and woodland areas, ending at a point for return transport. Bring lunch or food available. *Contact on day of walk only:* 07490 480 251 (no voicemails). Leader: Stuart Mills

Ken Cooper, 1932–2020

We are sorry to report the recent death of long term Society member Ken Cooper.

After joining the Society in 1982, Ken became a regular participant on Society walks and soon commenced a lengthy period as a walk leader, leading 89 walks up to October 2010. He particularly favoured leading walks in areas fairly local to Enfield, with half-day walks being a speciality.



Ken on the right holding his coat

Unfortunately, by early 2011 hip and knee problems gradually began to curtail his walking activities, although for a while he continued to support other Society activities, including heritage walks and publicity events.

Stuart Mills

Improvements to Enfield Town Centre

The Enfield Town Consultative Group (ETCG), established last September from representatives of twelve local groups (including the Enfield Society), operates as a forum to discuss its aspirations for the project and provide feedback to the development team on emerging plans.

John Parrot is the independent chair, coordinating and facilitating the ETCG. The role and remit of the Group are included in the Terms of Reference. It has no formal or legal decision-making role.

The project boundary has been expanded to include Enfield Chase station, Metaswitch and Tesco, but no additional resources are available. Funding for the project is on a gateway basis (giving access to further monies). The Council Healthy Streets Programme Director hoped the forum will continue throughout the life of the project, including design and implementation phases. Completion is expected to be sometime in 2021. The Enfield Town Centre improvements project and Adopted Enfield Town Framework Masterplan (March 2018) will work together.

Apart from the introductory meeting on 23rd September, the ETCG has met on two occasions. On 14th October proposals were outlined for part of Little Park Gardens to become an early 'quick win': these included public realm improvements, upgraded seating, lighting and cycle parking. Work has already started with clearing the area of shrubs. There are expected to be further 'quick wins'.

Also on 14th October the Group formed a workshop reporting back on key issues relating to the project themes: spending time in, travelling to and from and travelling around Enfield.

The 2nd December meeting heard preliminary analysis of the Let's Talk Enfield Town Visioning Report (engagement programme). The engagement deadline had been extended to 10th November. Further details will be presented to the next meeting.

Also at the December meeting, two members of the Group gave a presentation illustrating the poor state of some facades on premises in Church Street.

Bill Wilson

Historic Buildings: Grovelands, Southgate

Stephen Gilbert

Until the late 18th century the area around what is now Grovelands House and Park was known as Lord's Grove. Among the many owners of the estate were Sir William Cecil in the 16th century, Sir Robert Cecil in the early 17th century and the Duke of Chandos in the late 18th century. About 1796 230 acres were sold by the 3rd Duke of Chandos's son-in-law to Walker Gray. He was the son of Abraham Gray, a Quaker brewer in

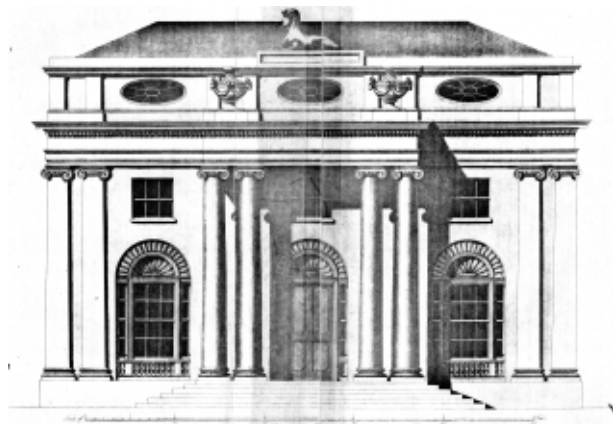
Tottenham, and was related to the Walkers of Arnos Grove (see newsletter 177, Spring 2010). In 1797 Walker Gray commissioned John Nash to build what he called Southgate Grove, and Humphrey Repton to landscape the surrounding grounds. John Nash went on to become one of Britain's leading architects and he received commissions from the Prince Regent for the Royal Pavilion, Brighton, Regent Street and

terraces around Regent's Park. The house was described in Peacock's "Polite Repository" of 1798 as being "situated in the midst of a grove of trees beautifully scattered over the lawn, the grounds falling gradually to a fine piece of water." The house was originally surrounded by a walled kitchen garden, ornamental pleasure grounds, an orchard and various outbuildings which have since been replaced.



1. Southgate Grove, drawn from nature by G. Eyre Brooks, Surveyor.

The house is approached from The Bourne through a pair of gates flanked by a single storey lodge of 1800 which is Grade II listed. The driveway, which passes an elevated octagonal grain store, leads up to the north front of the Grade I listed neo-classical house. The north and south façades have two pairs of two storey high white Portland stone columns with Ionic artificial Coade stone capitals supporting flat pediments.



2. North Front of Southgate Grove, the seat of Walker Gray Esq. John Nash arch. Engraved and published by George Richardson in New Vitruvius Britannicus 1802.

The principal east garden front has four equally spaced Ionic columns supporting a flat pediment. The building is covered in unpainted stucco and has Ionic pilasters at the corners. The ground floor windows extend upwards from the floor and, except those behind the projecting central part of the east front, are divided into three parts with a shell and fan shaped tympanum above. The first floor is lit by rectangular windows with horizontal oval windows on the attic second floor. Above there were originally Coade stones sphinxes.



3. View of Grovelands from the north-east in 1968.



4. The entrance vestibule, seen here in 1959, has a vaulted and radially fluted plaster ceiling and three grisaille (monochrome painted) panels with classical sacrificial scenes on the walls.



5. The central top-lit hall, seen here in 1959, has a short central single flight of stairs which divides into two to reach the landing on the first floor, where the bedrooms and dressing rooms were located.



6. Next to the entrance vestibule on the garden front is the Birdcage Room, seen here in 1954. This octagonal breakfast room is painted in Tromp l'Oeil to resemble the interior of a cage, with views through creeper-clad bamboo bars to a garden.

Also on the ground floor were the Eating Room, Drawing Room and Library which led through to the conservatory on the south front. On the west side of the house were the servants' quarters including the Housekeeper's Room, Butler's Room and Servants' Hall. In the semi-basement were storage rooms including an ice-house.

After Walker Gray's death in 1834 the house and estate were bought by his nephew John Donnithorne Taylor of the Taylor Walker brewery. He renamed the house Grovelands, enlarged Repton's lake and built a ha-ha (sunken wall) to prevent his deer from coming too close to the house. He also constructed a second grander approach to the house from Alderman's Hill and bought and then demolished Cullands Grove because he did not like to be able to see neighbouring houses from Grovelands. In 1881 he opposed the separation of Southgate from Edmonton. In 1885 the estate passed to his son Robert Kirkpatrick Taylor who lived at Grovelands until his death in 1901.



7. Robert Kirkpatrick Taylor and John Donnithorne Taylor are shown here with members of their family in the Birdcage Room.

In 1902 John Vickris Taylor put the family estates up for sale and most of the land was developed with housing. However, the lot containing Grovelands House failed to reach the reserve price. Some 91 acres of the grounds adjoining the house, including the lake, were sold to Southgate Urban District Council in 1910 and Grovelands Park was opened to the public in 1913.



8. During the First World War the house was converted for use as a military hospital and a group of staff and patients are shown here in 1916.

After the war the house was returned to the Taylor family. In 1921 the house and 6 acres were sold to what became the Royal Northern Hospital. A further 20 acres were added before the hospital opened in 1926. The hospital closed in 1976 and the house lay derelict until it was sold to the Priory Hospital Group. It was carefully restored and sympathetically extended to the west, winning a Civic Trust Award. In 1986 Grovelands Priory Hospital opened to care for patients suffering from mental and addiction problems. The house is usually open to the public for guided tours on the Open House London weekend in September. It can be reached by bus W9 to The Bourne and other buses to Southgate Underground station.

A full bibliography used for the preparation of this article can be found on our web-site. We are grateful for the help of Enfield Local Studies and Archive who provided many of the publications consulted as well as supplying all the illustrations used.

Partnership working with Chase Side Primary School

Dave Cockle



Enfield has the longest river length of all London boroughs. Known as the New River Loop it covers more than 27 miles.

The New River, built to supply water to London from Hertfordshire, runs just behind the town centre through the town park (which is the last remaining public open space of Enfield Old park).

Written by
Jack Peverell
Year 2.

The Society has been working with teachers at Chase Side Primary School, in a project encouraging the children to get involved in local history as well as providing a public space for art work to be displayed.

Using our co-President Monica Smith's book, *The Enfield Book—A Young Explorer's Guide* for inspiration, Year Two & Three children went out exploring Chase Green, Chase Green Gardens and Windmill Hill. Back in the class room they then created sketches and drawings depicting the local heritage buildings, which they had seen.

With the co-operation of Govia Thameslink Railway, the children's art work can now be seen on Platform One at Enfield Chase Station, forming a back-drop to the outdoor seating area for Leo's Coffee Shop.



With the Chairman are (left) Paris Ellis-McLellan and (right) Lisa Doggett, teachers from the Chase Side Primary school

Dugdale Centre talks & exhibitions

Lunchtime taster talks

All talks are free to attend but advanced ticket reservation is advised. Talks take place in one of the 1st floor conference rooms.

Tuesday 25th February, 1pm–1.45pm, *Enfield's Railway History (West)—The Hertford Loop* by Dave Cockle. In 1910 the GNR extended the railway from Enfield. The 'Hertford Loop' line is heavily engineered with deep cuttings, embankments, tunnels and viaducts necessary to take the railway through to Hertford and on to Stevenage. This illustrated talk will show the many changes and the social impact the coming of the railway had on the communities it served.

Tuesday 17th March, 1pm–1.45pm, *Enfield Town's Lost Palaces* by Ian

Jones. Enfield's manor house—a Tudor building known locally as the 'Palace'—was situated where Pearsons is today until it was demolished in 1928. This talk examines the pictorial and archaeological evidence for the building and gardens with special focus on the surviving Oak room.

Tuesday 21st April, 1pm–1.45pm *Public Art in Enfield* by Joe Studman. There are mosaics, sculptures, paintings and memorials in Enfield that many of us walk past every day without really noticing them. Take a virtual tour around the Borough looking at the works of art displayed in public places for all to see.

Exhibitions

Enfield at War 1939–45. A major exhibition highlighting the Home Front in Enfield during World War 2. Daily 9am to

5pm, until Sunday 19th April. Free admission.

Lost Enfield. A small exhibition of photographs from Enfield's Local Studies and Archive showing bygone scenes and lost buildings from around the Borough. Monday to Saturday, 10am to 5pm, until 29th May. 1st floor of the Dugdale Centre. Free admission.

Enfield Local Studies & Archive



Meetings of other organisations at Jubilee Hall

Friday 14th February, 8pm, Flints and Mammoths London N13 Part 2 by Neil Pinchbeck. [EAS]

Wednesday 19th February, 8pm, The Bayeux Tapestry by Mike Brown. [EHHS]

Wednesday 26th February, 2.30pm, Talk on Lavender Hill Cemetery by Joe Studman. £4 per person.

Tuesday 10th March, 8pm, Evaluating the November 1918 Revolution in Germany by Dr Christopher Dillon (King's College London). [HA]

Wednesday 18th March, 8pm, EHHS AGM and Talk. AGM of Edmonton Hundred Historical Society followed by a talk by Dr Jim Lewis entitled London's Lea Valley: Home of Britain's Growing Food and Drink Industry.

Wednesday 25th March, 2.30pm, Winchmore Hill by Joe Studman. £4 per person.

Tuesday 7th April, 8pm, The First World War's Impact on the British Monarchy by Professor Heather Jones (University College London). [HA]

Wednesday 22 April, 2.30pm, Market Fairs and Festivals by Joe Studman. £4 per person.

Wednesday 20th May, 8pm, Shackleton and the Endurance Expedition by Carol Harris. [EHHS]

EAS: Enfield Archaeological Society, non members welcome £1.50 each

EHHS: Edmonton Hundred Historical Society, non members welcome £1 each

HA: Historical Association, non members welcome £1 each

Hospital radio interview with Frank Bayford

Frank Bayford, who has spoken many times to The Enfield Society, has been interviewed by the Royal Free Radio about his time as a pharmacist at Chase Farm and the history of the hospital.

You can find the link to the Youtube interview from our web-site, enfieldsociety.org.uk/frank-bayford. The interview is 32 minutes in duration.

Andrew Lack

Society and Council meeting notes

Richard Stones

Here are some updates on recent issues reported in Enfield Society News which were covered in the Society's December meeting with Sarah Cary, Executive Director Place for the London Borough of Enfield.

Whitewebbs 25-year Lease

The Council confirmed that there had been 18 expressions of interest which the Council emphasised were not "tenders" and that LBE were a long way from making a decision.

The Society expressed concern that the Council risked losing control over the property and that the terms of lease were critical to the success of the project. LBE agreed that the Society and other interested groups should be allowed to view the proposed lease.

The Council confirmed that the lease would not be granted until the proposed use of the land was agreed and the lease would be subject to grant of planning permission for this use. The Council had considered various other options for the future of the land, including its sale.

The Society is surprised to see that the woodland had been included in the lease. However, the Council said that this was the current position.

The Society is concerned that the Pump House near the lake, which is a locally listed structure, needs to be treated with care by the leasing process. We also feel this is an opportunity to restore and enhance the now overgrown heritage trail along the abandoned New River loop.

"Quietways" to become "Cycleways"

The Society has learned that Quietways are to be re-branded as Cycleways and

that this change will give the erroneous impression they are not for pedestrians. This is how the matter is being reported on the TfL web-site: Cycleways are routes that link communities, businesses and destinations across London in one cycle network. They used to be called Cycle Superhighways and Quietways.

Whilst the Society appreciates the shared use of routes makes good financial sense, speeding cyclists find pedestrians a nuisance, and we fear they will use the term 'cycleways' as an excuse to hassle them into feeling that their presence is unwelcome, despite 'pedestrian priority' notices that appear in some places, and that accidents or aggression will result.

The Council confirmed this decision was made by TfL and that new standardised signs would be installed and that pedestrians have priority.

Spurs training ground: Nature Reserve

As a condition of the planning consent for their new educational facility, Spurs have agreed to fund a nature reserve. The Council shared the Society's anxiety to see progress with this project and agreed that they would pursue the matter with Spurs.

Boundary Stream footpath

Horrendous quantities of litter were collected from the footpath by the last Cleaner Neighbourhoods sortie (see page 11) and the Society raised this with the Council. We were told that this area had been a "crime focus" and action had been taken in the past, but seemingly things had declined again. The matter was to be referred to the Parks Department.

Edmonton & Eastern Enfield Group

The next meeting will be on Wednesday 11th March at 7.30pm at All Saints Church Hall, Church Street, Edmonton. We will have an Illustrated presentation by Martin Kiefer from architects Lifschutz Davidson Sandilands about the exciting new development plans for Edmonton Green Shopping Centre.

This is the talk that was originally scheduled last December. It should be an interesting meeting and there will be plenty of time for questions and answers afterwards. All are welcome to attend.

Dave Cockle

Enfield Society 2019 grants

Andrew Lack

The Enfield Society makes regular grants to local organisations which help further our Charitable objectives. In 2019 a total of £9,460 of grants were agreed by the Management Committee.



Broomfield House Trust, Shell Memorial restoration, £800

Colin Younger, working with the Broomfield House Trust and the Friends of Broomfield Park, has secured funding from Heritage of London Trust to restore the Shell Memorial which records the purchase of Broomfield House and the Park in 1903. We have agreed to top up the Heritage grant.

The memorial has decayed through the effects of pollution and moss and lichen growth and the lettering has almost disappeared.

The Memorial's inscription reads:

BROOMFIELD PARK
CONTAINING
54 ACRES 25 POLES
WAS PURCHASED FOR £25,000 BY THE
SOUTHGATE URBAN DISTRICT COUNCIL
AND OPENED TO THE PUBLIC
ON 25 APRIL 1903

It also lists of the members of the Council, the Surveyor and Clerk.



Installation of "Minerva" fresco at Dugdale Centre, £3000

The Enfield Society has previously helped the Broomfield House Trust with the cost

of restoring the "Minerva" fragment of the Lanscroun frescos rescued from Broomfield House. This new grant is towards the permanent establishment of the restored fragment at the Dugdale Centre.

Pymmes Brook Path Display Cabinets, £1660

The Enfield Society is contributing half the cost of installing three information cabinets at Hadley Green, Arnos Park and Tottenham Locks, with the remainder funded by the London Borough of Enfield. These positions roughly equate to the ends and mid-point of the Trail (see newsletter 211, Autumn 2018).

History Detectives, Canal & River Trust, £4000

This is a project under which children in schools near the Lea Valley Navigation will research the history of important structures on the banks of the river through written records and oral reminiscences. The results will be displayed at an exhibition and made into a "virtual guide" app. The project is co-funded with National Lottery Heritage Fund and The RSA Fund. This forms part of the Canal & River Trust's "Hinterlands" project.



Wright's Flour Mill, one of the industries included in the project

The project is expecting to work with local schools allowing pupils to become history detectives to uncover the hidden and surprising histories relating to the industrial and natural heritage in and around the canal. We hope to be able to give more details in the next newsletter.

How to apply for a grant

If you would like more information on getting a grant from us, take a look at our web-site enfieldsociety.org.uk/grants

Council plans for Upper Edmonton

At our recent meeting with Sarah Cary (see page 9) she informed the Society of plans being drawn up for Upper Edmonton, which is the most deprived area of the Borough. Projects include:

- Fore Street environment improvements where the Council is applying for funding from the Good Growth and Liveable Neighbourhoods Funds,
- The 'daylighting' of Pymmes Brook,
- The renewal of the Snells Park and Joyce Estates to increase the number of units from 800 to 3,000 including 550 additional Council homes. This would be a Council-led development with the Council acting as landlord. It would also provide properties for rent by key workers at the North Middlesex Hospital.



The Council also sought the financial support of the Society for the re-siting of the Upper Edmonton War Memorial, which today is on the pavement in Fore Street outside the Upper Edmonton library (pictured). The Society would be pleased to assist and favours the Memorial being positioned near to Silver Street Underground station.

Richard Stones

Membership renewals

Unfortunately due to illness some of the membership renewal cheques are taking longer to process than usual, but they are in the system and should be paid in soon.

If you have not yet renewed please send a cheque for £5 per member to Jubilee Hall, 2 Parsonage Lane, Enfield, EN2 0AJ along with your name and address for identification.

A final reminder will be sent to all members who have not yet renewed with the next newsletter.

Enfield Society Meetings

Our talks are free to members. Non-members are welcome to attend and are asked to pay £1 each—or join the Society for just £5 per year.

A calendar of talks can be found at enfieldsociety.org.uk/calendar

Morning meetings, 10am for 10.30am, Jubilee Hall

Tuesday 25th February, *Re-generating the Eco-Park: a win-win approach to waste disposal in North London?* by Trudi Axtens and Ursula Taylor, North London Waste Authority.

For 50 years there has been a waste disposal site at the Edmonton Eco-Park that has diverted more than 21 million tonnes of non-recyclable waste that would otherwise have gone to landfill. The current energy from waste facility is now nearing the end of its useful life and plans for its replacement have been progressing since 2014, with proposals for a new facility that will be far more efficient than the one it is replacing.

Work on the site began in early 2019 and in this talk Trudi and Ursula will describe the project's progress and how the facility, when completed, will make a major contribution to managing the non-recyclable waste collected in north London and to achieving the Government's target of 'Net Zero'.

Tuesday 31st March, *The Lea Valley from Ice Age to Wetlands: the Lea Valley's return to nature* by Dr Jim Lewis. This talk covers 10,000 years of Lea Valley history in one hour and looks at how the valley was formed. Here the opportunity is taken to explore how industrial and domestic growth has brought about unforeseen consequences for our planet. Of course, like many of Jim's talks, there is always a little bit more!

Tuesday 28th April, *Recreating young Queen Victoria's rooms at Kensington Palace* by Lee Prosser. The rooms where Queen Victoria grew up at Kensington Palace were, until recently just a shadow of their former selves. Research has helped to restore them to Regency splendour for the latest exhibition dedicated to her early life and also tells a different story of her childhood. In the talk Lee will trace that story and explore some of the discoveries.

Evening meetings, 7.30pm for 8pm, Jubilee Hall

Monday 17th February, *Lost Buildings of Enfield* by Joe Studman. Enfield Palace, Durants Arbour, Burleigh House, Percy House, Enfield Assembly Rooms, Pronouns House, Zion and Chase Side Chapels, Gentleman's Row bothy, Cecil Road farm as well as several 17th and 18th century inns and 20th century cinemas are among the many interesting historic buildings in Enfield which have been demolished. Many of these and others will be illustrated in Joe's talk.

Monday 16th March, *A History of the Telephone Service in Enfield* by John Liffen. The telephone was introduced in Britain in 1878 but it was not until 1899 that the first exchange in Enfield was opened, in a small room next to a pub. Initially take-up was slow but by the 1920s large new exchanges were needed. The talk reviews the development of telephone use across the area of the present London Borough of Enfield, focusing particularly on the visible infrastructure. However, impending changes in communications technology may mean that the prominent exchange buildings will be surplus to requirements in a few years' time.

As well as recent photos taken by the speaker, the talk will include many historic images drawn from BT Archives, Enfield Local Studies & Archive and the Science Museum Group.

Wednesday 15th April, *William Morris and the Arts and Crafts Movement* by Mark Lewis. Celebrating the life and work of this illustrious poet, artist and social reformer, who pioneered a movement that reacted against the soulless machine production of the Industrial Revolution and attempted to promote joyful labour, the enjoyment of fine craftsmanship and simplicity of expression.

Mark Lewis is a designer-maker specialising in silversmithing, jewellery and product design as well as being a Fellow of the Royal Society of Arts, a Liveryman of the Worshipful Company of Horners and a member of the Drawing Research Network.

Joint meeting with the Edmonton Hundred Historical Society.

Cleaner Neighbourhoods Group

At the end of November members of the Cleaner Neighbourhoods Group met for their last mission of 2019, a return visit to the Boundary Ditch footpath in Ponders End, previously visited in March.

This riverside footpath runs between Ponders End High Street and the Cuckoo Hall Lane playground providing a pleasant green space in an otherwise mainly built up area. Unfortunately it does attract those members of the community who seem to enjoy dumping their rubbish wherever they please. Undeterred our volunteers collected over seventy bags of litter plus larger items including old armchairs, car tyres etc. This made a total of 270 bags of litter collected in 2019. As on previous occasions we received complimentary remarks from numerous local residents who were pleased to see what we were doing.

Nigel King



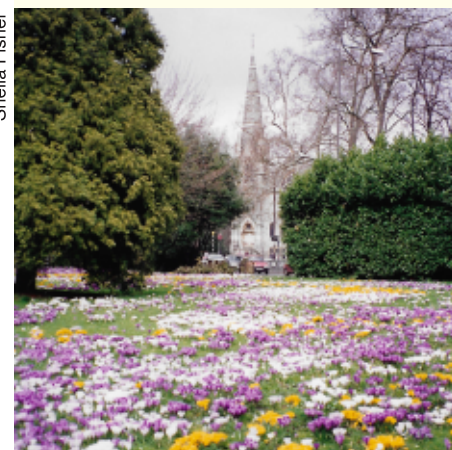
Library Green twenty years ago

What a dreary autumn and winter it's been so far. So, what better way to look forward to spring than to recall the wonderful spring display of crocuses that used to adorn Library Green in Enfield.

This view was taken over twenty years ago and whilst there are still crocuses on the Green each spring, the display today is a shadow of what it once was.

Our thanks to member Sheila Fisher for suggesting we include this item.

Sheila Fisher



Society Directory

Joint Presidents: Monica Smith MBE
Colin Pointer

Vice Presidents: Lord Graham of
Edmonton, Mr M. Saunders MBE,
Mr A. J. Skilton, Mr L. Will

Chairman: Dave Cockle

Hon. Secretary: Richard Stones

Hon. Treasurer: David James

Management Committee: Dave Cockle,
Tony Dey, Robert Fowler, Stephen
Gilburt, David James, Joyce James,
Nigel King, Andrew Lack, Janet
McQueen, Stuart Mills, Hilary
Morris, Val Munday, Anne Osborne,
Richard Stones, John West, Bill
Wilson.

Office: Jubilee Hall, 2 Parsonage Lane,
Enfield EN2 0AJ
Telephone: 020 8363 9495
Messages left on this number will be
dealt with as promptly as possible.

Web-site: enfieldsociety.org.uk

How to contact us

info@enfieldsociety.org.uk

To contact our specialist groups either
call the number given or use our general
enquiries e-mail (above) and we will
redirect your message.

Architecture and Planning: Bill Wilson

Cleaner Neighbourhoods Group: Nigel
King

Coach Outings: Janet McQueen,
020 8367 7374

Conservation Areas: John West,
020 8886 6080

East Enfield and Edmonton: Val
Munday

Footpaths and Walks: Stuart Mills

Green Belt: Dave Cockle, 020 8366
2242

Heritage at Risk: Janet McQueen

Historic Buildings: Stephen Gilburt,
020 8363 0031

Jubilee Hall bookings: Janet McQueen

Membership: Joyce James, 020 8363
9495

Press: Angela Bowring

Publications: Monica Smith

Records and Research: Hilary Morris,
020 8372 3080

Trees: John West, 020 8886 6080

The Enfield Society is a limited
company No. 312134 and registered
charity No. 276451.

Printed by Premier Group London,
ISSN 2042-1419 (print), 2042-1427
(web)

Edmonton rose bed in a sorry state

We sponsored Enfield in Bloom last year who purchased and planted new roses in the bed at the junction of Victoria Road and Church Street.



The Victoria Road rose bed in Spring 2019

In our Summer 2019 newsletter (page 8) we reported that Enfield In Bloom were needing additional volunteers. Sadly, the volunteers who have looked after this and other beds around the Borough have had to stop due to advancing years and a lack of newcomers.



...and in December 2019

Some beds have been adopted by Enfield Council. Others are being looked after by local volunteers but no one has taken on the Victoria Road rose bed, which is now in a very sorry state, with four of the six roses stolen, the neat bamboo edging trodden down and weeds infesting the whole area.

Andrew Lack

Evening Meetings Programme Organiser

The Society's evening talks, which are well attended and an important benefit of our membership, are in need of a new organiser from 2021 onwards. Could you help us by arranging speakers?

The evening meetings take place at 8pm in Jubilee Hall on the third Mondays of January to November (except June, July, August and December). The programme for 2020 has already been arranged.

Please contact Stephen Gilburt (020 8363 0031) if you would like more information on what is involved or if you would be willing to undertake this task.

A spectacular view of London

Our organised walk on December 4th, lead by Margaret Redman who picked a perfect Winter's day, began with the beautifully tended formal gardens of Regents Park. The group, over twenty strong, headed up through the park, pausing for a group photo, before climbing Primrose Hill for a panoramic view from Westminster to the City and Docklands beyond.

Margaret Redman



After a lunch stop we continued over to Camden Market to visit the remains of the once enormous Camden Goods Depot, which include underground passage ways to allow horse-drawn carts down to the level of Regent's Canal for loading. The site also includes the Grade II* listed horse hospital which is now part of Camden Lock Market. And finally through the bustling market to head home from Chalk Farm tube station.

Andrew Lack

Bell-ringers wanted

Enfield has four splendid church bell towers. St Mary Magdalene and St Andrew in Enfield and All Saints, Edmonton have eight bells. Christ Church Southgate has ten. The Borough does however have a shortage of ringers and few know that change ringing is a sociable way to exercise and develop mental and musical agility.

Find your local tower to discover when they have practice sessions. If you are interested in learning how to ring, look online at bellringing.london, or e-mail edmontonbells@hotmail.com

Philip Ridley