

## Enfield Town centre to receive £8.5m make-over

*John West*

**A**t a public meeting, attended by between 70 and 80 people, on Sunday 15th September, Council Leader Nesil Caliskan started a conversation with residents and businesses over making changes to Enfield Town.

Earlier this year Enfield Council was granted £6m from the Mayor of London's *Liveable Neighbourhoods Programme* to help improve Enfield Town, plus it has £1.5m from TfL and is investing £1m from its own budget, with further contributions from developers. Cllr Caliskan admitted that the amount would not be sufficient on its own, but that it would help "unlock" further investments.



What kind of impression do visitors to Enfield Town get when arriving by train?

Following the public meeting the Council ran a number of events in and around Enfield Town to talk to people. These included "pop ups" and workshops. A survey was offered on-line and on paper with the completion deadline being extended until 10th November as this newsletter was in preparation. A Consultative Group has been established with representatives of groups with an interest in the Town. These include residents' associations, businesses, the Over 50s Forum and the Enfield Society, among others. The Group is reviewing the feedback, providing more detailed input as well as overseeing the proposals being developed by the Council.

It was clear from the public meeting that the Council is keen to see Enfield develop an 'evening economy'; Cllr Caliskan reported a recent survey which listed Enfield as the only Borough in London without one. There was also a lack of shared workspace. Public safety was prominent in the Leader's presentation—LBE has recently invested £1m on CCTV. However, it was admitted the Council could not sort out the anti-social behaviour problems alone, though it was felt that improved design of the Town Centre could assist.

The Council has identified the area between Church Street and the bus station in Little Park Gardens as the first to be improved. It is hoped this can be done quickly to demonstrate what can be achieved.

A similar consultation exercise was carried out during September in Palmers Green, proposals are awaited. Like Enfield Town, Palmers Green has far too many empty shops. Another consultation is being carried out by the Council at the Angel, Edmonton.



This area at the end of Church Street is ear-marked for the first improvement

### Enfield Society's view

We welcome this initiative and are pleased to be included on the Consultative Group.

The Society's Architecture and Planning Group has considered the study area and would prefer it coincided with the Enfield Town Master Plan and extended as far as Enfield Chase Station, as Windmill Hill is an important gateway to the Town. It appears that the project is minded to widen the area, but that finance is limited so in the initial phase the Council will focus on the main retail areas. There will be further consultation once proposals are developed and we are looking forward to seeing the ideas that come forward.

We would like to see traffic calming measures along Church Street, with greater attention given to pedestrians, better interchange between bus services; the introduction of a 20mph speed limit throughout the Town Centre; improvements to the street scene, more seating, better links between Enfield Town and Enfield Chase Stations through improved signage and the restoration of the non-working clocks above various shops in the Town. Revival of the Town Centre to support the retail sector with restaurants, wine bars, bistros etc. and to encourage more people into the Town both during the day and in the evening. There is also a need to follow the example of other town centres and develop the Town as a community hub based on health, education, entertainment, leisure and arts and crafts. We also want to encourage viable independent retailers who are able to negotiate sensible rents with freeholders.

## Presidents' Column



*Monica Smith MBE and Colin Pointer,  
Joint Presidents*

Two years ago the Society was commenting on the Council's Framework Masterplan for Enfield Town Centre which set out some bold proposals for how the Town might develop and improve in the foreseeable future. The Leader has recently launched new discussions and consultations, having secured major funding, and the Council has extended its remit to include other major retail areas within the Borough. Currently we are involved with the newly established *Let's Talk Enfield Town* Consultative Group which consists of key local stakeholders. In the past London based consultants were appointed to produce proposals for enhancing the Town; the results were inappropriate and totally unacceptable. What we now have is a Group with the required local knowledge, experience and vested interest to do much better. Hopefully progress will be made towards developing and adopting a comprehensive scheme that will enliven and improve the Town and restore most of its lost character.

While supporting change, progress and innovation to achieve the desired results in Enfield Town we need to remember that it is not just a shopping centre; it is the historic heart of Enfield and The Historic Matters Declaration, of fading memory in 2006, is still very relevant today—

“We believe that history matters. A society out of touch with its past cannot have confidence in its future. History defines, educates and inspires us. It lives on in our historic environment. As custodians of our past we will be judged by generations to come. We must value it, nurture it and pass it on.”

—a tenet hopefully held dear by every member of The Enfield Society.

## Enfield Society Meetings

Our talks free to members. Non-members are welcome to attend and are asked to pay £1 each—or join the Society for just £5 per annum.

A calendar of talks can be found at [enfieldsociety.org.uk/calendar](http://enfieldsociety.org.uk/calendar)

### Morning meetings, 10am for 10.30am, Jubilee Hall

**Tuesday 26th November, *Every Contact leaves a Trace*** by Chris Truran. Chris joined the Metropolitan Police in 1975 and worked as a Scenes of Crimes Officer (SOCO), working in central, north and north west London for over 38 years. Chris examined over 25,000 crime scenes ranging from shop-lifting to murder. Last year Chris spoke to us about the development of fingerprint and DNA technologies.

In this second talk he will cover the first use of physical trace evidence in France in 1888 to trap a murderer which marks the birth of the use of Forensic Science in crime detection. The talk will cover the Soham murders of schoolgirls Holly Wells and Jessica Chapman and the kidnap and murder of Sarah Payne.

**Tuesday 10th December, *A review of the TES year in photographs, plus Quiz.*** This festive meeting will start with a review of TES events that took place across the past year, with this being followed by a light-hearted quiz. Last year you were tested on your knowledge of hats, vegetables and flowers: this year brush up your knowledge of birds, cakes and bits of Enfield—put your quizzing caps on and come along prepared to do battle! All accompanied by mince pies of course and prizes for the victorious winning team. An extra prize will be awarded to the team with the best team name. There's everything to play for!

**Tuesday 28th January, *My Father, Station Master*** by John Green. An anecdotal account of John's father's career as a railway station master, first in Lincolnshire then at Gordon Hill, Northumberland Park, then re-opening the Southbury Loop in the days when railway stations had signalmen, booking clerks and porters and steam trains were the norm.

### Evening meetings, 7.30pm for 8pm, Jubilee Hall

**Monday 18th November, *The suburban home front in the Second World War*** by

Mike Brown. The British Home Front is often portrayed as a common shared-experience, yet in reality it was very different depending on where you lived, especially town or country, and what period of the war. In this talk Mike Brown looks at life in the suburbs during WWII, and the changes which took place over the six years of the war, using artefacts and anecdotes collected in researching his books.

**Monday 20th January, *From Zion Chapel and Chase Side Chapel to Christ Church*** by Stephen Gilbert. This illustrated talk will tell the story of the buildings and some of the colourful characters associated with Zion and Chase Side Chapels and Christ Church Congregational Church Chase Side Enfield since 1780. Several members also had active roles in the local community, with Rev Henry Storer Toms and George Spicer campaigning to establish a School Board for Enfield and Dr John James Ridge seeking to improve public health in the late 19th century. In the 20th century Rev Ebenezer Rees was a founder, chairman and later president of the Enfield Preservation Society (the former name of The Enfield Society) and was involved with many other local organisations. Joint meeting with the Edmonton Hundred Historical Society.



**Monday 17th February, *Lost Buildings of Enfield*** by Joe Studman. Enfield Palace, Durants Arbour, Burleigh House, Percy House, Enfield Assembly Rooms, Pronouns House, Zion and Chase Side Chapels, Gentleman's Row bothy, Cecil Road farm as well as several 17th and 18th century inns and 20th century cinemas are among the many interesting historic buildings in Enfield which have been demolished. Many of these and others will be illustrated in Joe's talk.



# Why Enfield needs an “Article 4 Direction”

Matt Burn

In 2013, the Government introduced a new planning policy that allowed offices to be converted into flats without full planning approval. The intention was that vacant offices could be swiftly transformed into much needed housing. There are some good examples of conversions, but overall the policy has created a lot of problems.

Property developers have capitalised on the lack of planning oversight by creating poor-quality flats, which are often cramped, poorly ventilated and with no outside space. Developers are able to ignore the needs and views of local communities and as a result, many flats are in unsuitable locations. So far, 40 offices in Enfield have been converted into flats with at least another 20 in the pipeline.



For example, Brickfield House on Southbury Road (pictured above) was converted into 118 single room units and six 1-bed flats. Most of the units are smaller than the minimum size normally allowed and there are police notices warning residents about anti-social behaviour and drug use. At least 84 of the tiny studio units have families living in them, despite a Council planning officer suggesting the building would be unsuitable for children. In another office conversion in Bowes Park, the studio flat measures a meagre 13 square metres, which is only slightly bigger than a standard car parking space.

Developers have also targeted occupied offices and forced businesses to move out.

This is having a detrimental effect on businesses who are having to pay significant relocation costs. Enfield has lost a huge amount of its office space over the last 6 years, especially in town centre locations such as Southgate and Enfield Town (e.g. Lawrence House and Refuge House). Losing such a large proportion of office stock has had a negative impact on local employment and the economy of Enfield's town centres, as office workers provide valuable customers for local shops, cafes, pubs and other businesses (e.g. printers, couriers, professional services).

There is cross-party condemnation of the policy; Robert Halfon MP said, "... a policy that is possibly the most ill-thought-out, ill-conceived and subject to the law of unintended consequences, than almost any other policy ... over the past few years". Councils concerned about the impact of the policy, have enacted 'Article 4 directions' to regain control and force developers to go through the normal planning process.

Almost all London Councils enacted Article 4 directions several years ago; Enfield and Harrow are the notable exceptions. After many months of campaigning by residents, the Labour and Conservative Councillors have agreed to support enacting an Article 4 direction in Enfield. In September, Cllr Nesil Caliskan, Leader of Enfield Council, wrote to residents stating that: "I have asked officers to investigate as a priority how we can seek an Article 4 direction to help protect us from the negative aspects of uncontrolled permitted developments taking place in Enfield".

The Enfield Society has played a part in this matter by publicising a recent petition as well as raising it with the Leader at our most recent meeting. An Article 4 direction will help to protect office space and ensure that Enfield gets the good quality homes it needs.

## Other Organisations' Meetings at Jubilee Hall

**Wednesday 20th November, 2.30pm, Alexandra Park in the Great War** by Margaret Scholes. [EHHS]

**Wednesday 27th November, 2.30pm, Anglican Churches** by Joe Studman. In 1800 only St Andrews and All Saints existed as parish churches. In 1900 there were 20. £3 per person.

**Wednesday 18th December, 8pm, Christmas Carols. What are they? Where did they come from?** by Philip Norman. [EHHS]

**Tuesday 14th January, 8pm, Early Medieval London: From Market to Metropolis** by Dr Rory Naismith (King's College London). [HA]

**Wednesday 22nd January, 2.30pm, Treason Plots & Murder** by Joe Studman. The 17th century saw a series of plots against The Crown many of them involving Enfield people and places. £3 per person.

**Friday 7th February, 8pm, Sri Lanka, Traders, Temples and a Tooth.** (Speaker to be confirmed). [EAS]

**Tuesday 11th February, 8pm, Parliament and the Life of the Nation in the 18th Century** by Professor Julian Hoppit (UCL). [HA]

**Wednesday 19th February, 8pm, The Bayeux Tapestry** by Mike Brown [EHHS]

**Wednesday 26th February, 2.30pm, Lavender Hill Cemetery** by Joe Studman. A talk which looks at some of the graves to reveal a potted history of late Victorian and Edwardian Enfield. £3 per person.

**EAS:** Enfield Archaeological Society. Visitors welcome, £1.50 each.

**EHHS:** Edmonton Hundred Historical Society. Visitors welcome, £1 each.

**HA:** Historical Association (North London Branch) Visitor welcome, £1 each.

## Dugdale Centre

### Exhibitions

**Until 19th April 2020, Enfield at War 1939–1945**

**Until 31st December 2019, When Peace Broke Out**

**November 4th–30th, The annual exhibition of the Enfield Camera Club**

### Evening talks

**Tuesday 19th November, 7pm, Secrets & Spies**, Helen Lederer in conversation with

Trudy Gold. £10 per person (includes wine or juice).

**Wednesday 4th December, 7pm, Secret Wartime Britain** by Colin Philpott. £5 per person.

### Exhibition lunchtime taster talks

All talks are 1pm–1.45pm, free to attend but advanced ticket reservation is advised.

**Tuesday 26th November, The Archaeology of War** by Ian Jones. Sites and artefacts excavated, recorded and newly discovered by the Enfield

Archaeological Society.

**Tuesday 10th December, Heroes and Victims** by Ian Jones. A talk on air raids on Enfield during the Second World War.

### How to book

Tickets can be booked 3 ways:

**Online:** at [www.dugdalecentre.co.uk](http://www.dugdalecentre.co.uk)

**Telephone:** Call 020 8807 6680 for card bookings; Mon–Sat 10am–5pm

**In person:** Cash, cheque or card at Millfield Theatre, Dugdale Centre or Forty Hall

# News from the Society

Dave Cockle, Richard Stones & Monica Smith

## Council Leader meeting

Members of the Management Committee have regular meetings with the Leader of the Council, Cllr Nesil Caliskan and Sarah Carey, Director of Place. At the latest meeting with the Leader we raised several matters, many of which members will recognise as long-standing issues.

## Pubs Protection Policy

We would like to see a pub protection policy introduced. The leader recognised that a pubs protection policy would be useful to protect community pubs from speculative development. The Council will endeavour to look at the wording of policies of other boroughs and seek to include a pubs protection section within the next revision of the Local Plan.

## Local Plan Consultation

The Council have had a great deal of feedback from the consultation. In particular there was a dislike for very tall buildings. Careful consideration would have to be given to the height and location of tall buildings. We stressed the point that the proposed height of the Southgate Office Village development was too high. This is especially problematic given its position at the top of a hill.

## Park events reinstatement

We sought an assurance that the Council was diligent at ensuring reinstatement of parks following major events. This will go a long way to removing future opposition. The licence agreements have clauses requiring reinstatement and these need to be implemented. In our opinion the security bond placed on event promoters was too low to recover the cost of some of the damage to Trent Country Park.

The Leader understood that the damage to the Grade II listed Cockfosters Gate was being paid for by the lorry driver's insurance. Reference was made to the possible widening of the gate, but this would involve a Listed Building application and would take time. The Leader was keen that the gate post was restored as soon as possible. An alternative temporary entrance for events could be established from Cockfosters Road.

## Whitewebbs Park

We were told that a number of firms had expressed an interest in taking on a lease of the Park and Golf Course but no one firm had yet come up with a satisfactory plan. We were assured that public access would be retained.

## Clarendon Arch, Bush Hill

Progress with gaining access to this Historic Monument has stalled. We would like to see a site meeting convened with the relevant groups to explore options and hopefully take matters forwards. Meeting face to face would enable different views to be expressed and focus minds.



Clarendon Arch in happier days when access from Bush Hill was possible

The Leader confirmed that a meeting had been arranged between Historic England, The Council and Thames Water for November. It was hoped a representative from the Society could also attend although the meeting had been called by Historic England and they had the right to decide who can attend.

## Broomfield House

A plan has been formulated to restore the basic shell of the House and make it watertight with limited restoration of the ground floor to house a cafe. The restoration plan was financially dependent on a commercial development of the former Stable Block generating sufficient funds to pay for the work to the house. At this stage the Council is not seeking a development partner, it is establishing the feasibility of the proposal in consultation with English Heritage.

## Enfield Town traffic calming

This was a TfL scheme and a consultation was currently underway looking at the wider future of the Town Centre particularly as regards the night time economy. There is the possibility of funding being available to refurbish and/or repair four clocks, above shops, in the Town Centre which were not working.

## Free books for schools

As some compensation for the loss of the Education Project at Forty Hall for

schoolchildren, the Enfield Society decided to offer primary schools in the borough a set of 30 copies of our book, *The Enfield Book* which gives information on the area to assist with the national curriculum. Offers were made to 64 schools and 20 accepted. However six failed to come to Jubilee Hall to collect the books on either of the collection dates.

## Better news for the Charity Hall School, Edmonton

Members will be aware of the continuing efforts to find ways to repair and use the eighteenth century Charity School Hall in Church Street Edmonton. The Hall is Grade II listed and on Historic England's Heritage at Risk Register.

There have been various obstacles to achieving this. First, the Hall is owned by a successor to the original charity which built it, but it is not easy to demonstrate this legally when there has been no change of ownership since the eighteenth century. Secondly, it is not clear who, if anyone, is a trustee of this charity. And thirdly the charity is required by its constitution to use the Hall for religious instruction, secular evening classes and/or physical instruction. Any change of use, or the disposal of the Hall, will need the approval of the Charity Commission.

A working group of interested parties (including the Society) is making some progress. Examination of the surviving documentation, and research done by an expert from the Diocese of London, suggests that the ownership of the property is clear enough for title to be registered with the Land Registry. It is proposed to ask the Charity Commission to appoint new trustees of the charity and give the necessary approvals for a change of ownership and/or use. The Architectural Heritage Foundation has provided a grant for the updating of an "Options Appraisal" which will report on the feasibility and cost of various options for the use of the property. Meanwhile Heritage of London Trust Operations, a Building Preservation Trust, is acting a facilitator to find funding and potential users.

Even if all goes well it will take time to sort everything out.

In the interim it may be necessary to fund urgent maintenance and the Society will try to help with this.





## When is tall too tall?

The Society has submitted an objection to the planning application for Southgate Office Village on the grounds that the height is excessive for this location, overlooking and over-shadowing of nearby homes and its incompatibility with the adjacent Southgate Circus Conservation area. The development makes no attempt to reflect the surrounding area including



Photo mock-up showing how Southgate Office Village would dominate Mayfair Terrace

the Grade II\* Listed tube station designed by Charles Holden.

At Colosseum Retail Park we also have serious concerns about the height. This scheme is still at consultation stage and is likely to be the subject of a planning application later this year.

The Society is pressing the Council to develop a high buildings policy so that developers have guidance on this issue. Such a policy should state that the Council will oppose proposals where the height is excessive for the location and will carefully scrutinise all high-rise developments in terms of design and sustainability. The Society's own Architecture and Planning Group has given careful consideration to height and many of our Members have contacted us with concerns about proposals for high rise buildings.

There are concerns that high-rise development is unattractive to family and community life. Recent research by UCL and Loughborough University also raise concerns about the environmental sustainability of high-rise developments as tower blocks are especially prone to overheating in summer and heat loss in winter as air temperatures decrease with height. This problem is exacerbated when there are large areas of glass. The effect of wind tunnels around tall buildings is well known.

The Society will therefore look carefully at all applications where there are high rise developments and raise objections whenever this is appropriate.

*John West*

## Green Belt news

### Whitewebbs



The Golf Course and Park have been advertised by Knight Frank on behalf of Enfield Council. The brochure states that Whitewebbs and the adjacent land represents an exciting commercial opportunity to reinvent a popular golf course. At the Green Belt Forum in July we were assured that any future use will have to retain the current level of public access and abide by Green Belt planning regulations. We understand there has been interest in the property. As the 'bid window' closed during the preparation of this newsletter, there was no proposal for us to evaluate.

However, the Council's property department is working cooperatively with the Friends of Whitewebbs and knows that the community expects certain benefits and protections as part of the lease. These include: complete protection for the woodland, a community café/hub, preferably with changing facilities for local clubs, improved maintenance of the pathways and consistent oversight of the leaseholder. Although the public cannot participate in choosing the winning bid, there would be a public consultation if the selected leaseholder wanted to make changes that required a planning application. Enfield RoadWatch, The Enfield Society, the Friends of Whitewebbs and others are keeping a close eye on the situation.



### Crews Hill

Wyevale Garden Centre was sold last year to a subsidiary of Berkeley Homes for over £6 million. No development can happen while the site retains its current protections so a 2-year lease has been signed with British Garden Centres. We believe that this is only a temporary reprieve so we need to continue the campaign to keep all of Crews Hill in the Green Belt and protected from development.

*Carol Fisk, Vice-Chair Enfield RoadWatch*

## From our archive: Hilly Fields in snow, 1991

This time the Records and Research Group has chosen another view of Hilly Fields, seasonal in a beautiful coat of snow.



This picture prompted Roger Davis with the following thoughts:

Hilly Fields was a wonderful playground for children in all weathers and seasons.

One hill was known as "Toboggan Hill" and there was a nursery section as well as the dangerous one that had sudden dips which meant that the tobogganer would be airborne on occasions. I can also remember people going so fast that they failed to stop at the brook at the bottom of the hill and disappeared from view.

During summer when the grass had been cut, we would pile the clippings into huge piles and spend many hours just jumping into the piles and burying ourselves. We would do the same in Autumn with the huge amounts of oak leaves that fell. September was also a favourite when the chestnut trees started dropping their conkers.

Another favourite was catching sticklebacks and minnows in the brook. On one occasion with a much older girl from the house across the road, I fell in the brook and anticipating a grilling when I got home, my friend said that I should tell my parents that it was not my fault as the tide came in. As you can imagine, this caused much hilarity in my house and I was never allowed to forget the episode.

I do believe that during the second world war, the area just to the right of the photograph going up the hill was used as allotments for growing vegetables that were in such short supply during the war. What a beautiful walk along the path by the brook and turning right at the second bridge up to St. John's Church. On special occasions our entire family from various parts of Enfield would get together for a picnic and play rounders on those balmy summer days. Oh what I would give to go back to that era.

*Hilary Morris*



# Enfield Town 1870–1914

by Stephen Gilbert



1. This 1905 photograph, taken from the top of St Andrew's church tower, shows on the right Shoebridge and Rising's 1899 Kings Head public house. It replaced a mid 17th century inn. In the market place is the Universal Penny Bazaar next to a mound of fruit. The 8-sided market house, by Sidney M. Cranfield, was erected in 1904 to commemorate the coronation of Edward VII in 1902. It replaced John Hall's 1826 market cross which can now be seen in Myddelton House rose garden. (See newsletter 183, Autumn 2011 and newsletter 210, Summer 2018.)

The surviving part of the mainly mid 16th century Enfield Palace

(Enfield Manor House) can be seen behind Pearson Brothers and other shops in Church Street. Pearson Brothers had taken over William Lock's drapery shop in Enfield House in 1902. (Enfield Palace was finally demolished along with the shops in 1927 and replaced by Pearsons department store. The magnificent cedar of Lebanon, planted by Dr Robert Uvedale in 1663, was also cut down (see newsletter 186, Summer 2012).

On the left is W. Gilbee Scott's 1897 Flemish Renaissance style London and Provincial Bank which replaced the 17th century former Greyhound Inn. (It was bought by Barclays bank in 1918).



2. This view from about 1901 shows the newly opened J. Sainsbury in Palace Parade on the South side of Church Street with poultry proudly displayed in the open air in the lead up to Christmas. The interior was, as I remember, attractively tiled throughout. It had a central aisle with counters on either side. The shop assistants would prepare the amounts of meat, cheese, butter and other foods as requested by customers.



3. This colour postcard from around 1910, looking west along Church Street, shows the Palace Parade of shops built in 1898. Among the shops in the Edwardian period were Lipton famous for tea, Domestic Bazaar, Lilley and Skinner whose shoe shop opened in 1907, Enfield Confectioners and Saville Bros. who had pianos for sale at 24 guineas (£25.20) in 1905. Between the two buildings with the conical roofs was the entrance to Palace Gardens with its Edwardian houses. (These were replaced by Palace Gardens shopping precinct in 1982.) Further down Church Street were Parke's Drug Store (1898–1950s, which became Timothy White) and Raynes Library. There were offices for Philip Wagstaff House Agents (1902–29), Royal Chase Permanent Building Society and Gardner and Burgess coal merchants (1898–1906). On the right is the wall around Burleigh House.



## Part 2: Church Street



**4, 5.** Burleigh House was one of several large houses in Church Street in the late 19th century. It was built in the mid 17th century by James Mayoe, an unscrupulous lawyer. The house had brick pilasters on the front of the central section, which was probably the oldest part, and ornate wrought iron gates. The front entrance led into a fine hall, lined with Purbeck stone, which contained a fireplace with Flemish tiles. Behind was the kitchen with roasting spit and scullery. The house had its own well. Above the hall was

the drawing room with three circular headed windows. On the second floor were the bedrooms. Burleigh House was so named by Mr Withers who lived there with his wife between 1865 and 1912. The house was demolished in 1913 and the Rialto cinema was built on its site in 1920. (The cinema was renamed the Granada in 1967 but closed in 1971. After a period as a bingo hall, it was eventually replaced with the present forty two residential flats and six commercial units.)



**6, 7.** Left: this 1906 photograph shows the Post Office which moved from the Enfield Palace to its present site in the grounds of Percy House in 1906. Percy House (right) was a private day school for girls and boys from 1894 until it was demolished in 1907. The



parade of eight shops to the left of the Post Office was built in the early 1890s and more shops with living accommodation or offices above were added to the west in 1907. A parade of shops was built to the right of the Post Office in 1908.



**8.** This 1880s photograph shows the 1726 Rising Sun inn towards the western end of the south side of Church Street. Between 1862 and 1882 the licensee was Ebenezer Biscoe, and his widow Henrietta was the licensee from 1882 to 1891. They operated the inn with aid of a maid, barmaid and potman. Ebenezer Biscoe also hired out horses and ran a cab service. He enjoyed hunting with hounds and was a member of the First Volunteer Force, Yeomanry Cavalry, Lodge of Forestry and the Freemasons. (The inn was demolished in 1933 to allow for Church Street to be widened.) On the right is the wall around Little Park in Gentlemen's Row which became local government offices (see newsletter 190, Summer 2013).



# Enfield Town 1870–1914, Church Street



9. Kitchener's greengrocers began in Brigadier Hill before opening a stall towards the western end of Church Street. On Saturdays they had a stall in Enfield Market. Vegetables, nuts and fruit, including bananas from the Canaries and oranges and tomatoes from the Spanish mainland were sold. In this 1909 photograph Florence and James Kitchener, children of the proprietor, are shown with Alf Chidley standing next to Florence. Mr Kitchener, who ran three pair-horse vans, would leave for Spitalfields Market at 4am and the stall would be open between 10am and 8pm. In 1911 the Kitcheners left Church Street to move to a shop in Chase Side.

Next to the stall was Nickold's music shop which in 1910 had stocks of gramophones, talking machines and phonograph (gramophone) records.

A poster on the wall between the music shop and the stall advertised music hall performances at the Edmonton Empire in

Fore Street which opened in 1908. "Edmonton Empire. This new and beautiful hall. Tip-up seats throughout. Private boxes to hold four 7s 6d (37½p). Orchestral stall 1s (5p). Circle 6d (2½p). Pit 3d (1p). Cycles stored free of charge." [Enfield Gazette, 28th January 1910.]

Among the entertainers listed on the poster was Florrie Forde "The World's Greatest Chorus Singer" who sang "Down at the Old Bull and Bush" and other songs. There were also variety, comedy and juggling acts, a presentation of "Dick Turpin's Ride to York with the death of Bonnie Black Bess" and films from the Bioscope Company. The projector was initially rather perilously mounted on the edge of the gallery and the films were projected on to a screen at the back of the stage.

(In 1922 Marie Lloyd's last performance was at the Edmonton Empire—she died a few days later. The stage was enlarged when the Empire was converted to show sound films in 1933. It was demolished in 1970.)



10. This 1910 view is looking east along Church Street from the corner of Sarnesfield Road. W. J. Harris made baby carriages. The other shops in the parade were Graham Bros. "Cycle manufacturers and cycle experts", Arthur Escott's boot shop and J. Salman and Son oilman. Beyond the Bovril sign was Nickold's music shop and the Rising Sun inn which were both demolished in 1933 when Church Street was widened.

The photographs used in this article were taken from the extensive collection held by Enfield Local Studies Library and Archives. It also has many publications on Enfield which may be consulted. A number of the photographs in the collection were originally issued as postcards and some of them were hand coloured. In recent years many have been re-issued as postcards and are on sale at the Dugdale Centre. They may be also be purchased from The Enfield Society.

Collections of old photographs have been brought together in several publications including *Enfield, A Portrait in Old Picture Postcards* by Peter Lister, Michael Parker and Arthur Robinson 1991; *The London Borough of Enfield* by Alan Dumayne 1996; *Enfield* by Stephen Sellick 2001; *Enfield through time* by Stephen Sellick 2011.

For more information on Enfield Town see *A History of Enfield volume two 1837–1914 a Victorian Suburb* by David Pam 1992; *Enfield Past* by Graham Dalling 1999; *The Enfield Book* by Graham Dalling 2007 and *Enfield Town village green to shopping precinct* by David Pam 2007. For more information on cinemas see *Theatres, music halls and cinemas in the London Borough of Enfield* by Geoffrey Gillam 1986. For more information on public houses see *A–Z of Enfield Pubs part 1* by Gary Boudier 2000 and *Photographic History of Enfield Pubs part 1* by Gary Boudier 2001.

## Jubilee Hall Evening Meetings Organiser

The Enfield Society needs someone to book speakers, lay out the hall and Chair the evening meetings held at 7.30pm for 8pm in Jubilee Hall on the third Mondays of January to November (except June, July and August), from the beginning of 2021. The programme for 2020 has already been arranged.

Please contact me if you would like more information on what is involved or if you would be willing to undertake this task.

Stephen Gilburt, 020 8363 0031

## Southgate Opera

Trial by Jury (Gilbert & Sullivan) plus Pagliacci (Leoncavallo).

Thursday 20th to Saturday 22nd February at 7.30pm (Saturday Matinee 2.30pm)

Wyllyotts Theatre,  
Potters Bar

Tickets 01707 645005



## Community Litter-picking around Hilly Fields

CleanupUK is a charity dedicated to bringing communities together to combat the problem of litter. In today's world where green space is under threat I thought it was important to give something back to our special Hilly Fields and Tuckers Park. One Sunday a month since April 2019 local residents have met for one hour to litter-pick Hilly Fields, Tuckers Park and the local streets. Residents of all ages and their dogs have attended collecting nearly 100 bags of litter and many unusual items including road signs, a chair and a bike. Over the seven litter picks over 75 individuals have attended, many being children.



Whether it is rain or shine the atmosphere is always friendly and thanks to the Coop (on the junction of Chase Side) and Sainsbury's on Lancaster Road everyone involved receives a 'thank you' after the event. On a number of the events we have had more than 35 volunteers. I never could have foreseen what an amazing community event this would be. It is always wonderful to see local residents of all ages taking pride in their local area, educating the younger generations as to the importance of keeping our neighbourhood clean and people forming new friends. I am so proud of the people who make up my local community.

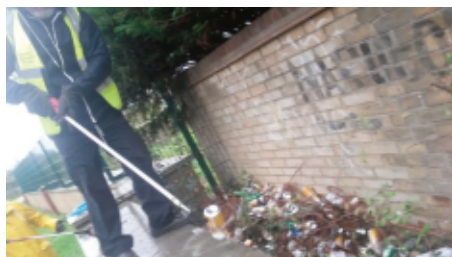
CleanupUK's *Beautiful Boroughs* Project helps people make their local area free from litter, safer and nicer to live in. They have helped existing community clean-up groups in Enfield and they would love more people to get involved! If you would like to start up a cleanup group in your area please contact: [info@cleanupuk.org.uk](mailto:info@cleanupuk.org.uk) or call them on 07469 660 842.

If you would like to get involved in our Hilly Fields and Tuckers Park litter pick please contact [enfieldlitterpickers@gmail.com](mailto:enfieldlitterpickers@gmail.com) or visit our Facebook page 'Hilly Fields and Tuckers Park Community Litter Pick.'

*Danielle Shap*

## Cleaner Neighbourhoods Group

On a wet Saturday morning in October eleven bedraggled Cleaner Neighbourhoods Group volunteers took part in a return visit to the Salmons Brook footpath and Montagu Recreation Ground in Edmonton. Our previous visit to this location was almost a year ago and this time our dedicated litter-picking volunteers collected thirty seven bags of litter largely comprising empty beer cans and bottles.



After two hours of heroic efforts and by this time looking wetter and more bedraggled than ever we adjourned to a local café for a well earned hot drink and a chance to discuss the morning's efforts.

### Note the date. . .

Our last litter-picking event of the year will take place on Saturday morning 30th November 2019 when we shall re-visit the Boundary Stream footpath in Ponders End. We shall start at 10am and the meeting point will be the small car park adjacent to the former Boundary House public house which is at 3 High Street Ponders End EN3 4EJ. This can be reached by way of the 191 bus from Enfield Town; alight at the Nightingale Road bus stop and the meeting point is then just a few moments walk back in the direction from which the bus has come.

*Nigel King*



Just some of the 37 sacks of rubbish collected in Edmonton in October

## Next newsletter dates

We accept copy by e-mail or paper. Contact the Editor, Andrew Lack, ([info@enfieldsociety.org.uk](mailto:info@enfieldsociety.org.uk)) if you have any questions about making a contribution. The copy date for the next newsletter is Friday 17th January 2020 and it will be published on Tuesday 11th February 2020.

## World War Two workers honoured

On Thursday 12th September Dave Cockle and Val Munday attended the unveiling of a plaque to acknowledge the part played by the management and staff of the Royal Small Arms (RSA) Factory during the Second World War, 1939–1945. There was an introduction by RSA Trust Chair Gary Walker and by Phillip Abbott, Archives and Record Manager at the Royal Armouries. The plaque was unveiled by Dr Matthew Ford from the University of Sussex.



The photograph shows (left to right) Ray Tuthill, former employee of the RSA and current Chair of the RSA Apprentices Association, Joan Ryan MP for Enfield North, Dr Matthew Ford and far right Phillip Abbott.

The erection of the plaque is part of the Roll of Honour project between the RSA Trust, the Royal Armouries and Enfield Council's Local Studies and Museum. The project is funded by the National Lottery Heritage Fund and aims to uncover the hidden stories of the Royal Small Arms factory workers during both World Wars by collecting photographs and stories and by transcribing surviving staff registers containing names of men who worked at the factory during WW1; Two rolls of honour are being created for staff who fell in the service of their country during the two World Wars and a roll of honour of all the staff who worked there. The plaque has been placed at the RSA Island Centre which has adapted the Main Machine Shop of the factory into a busy local business centre which includes a museum displaying artefacts associated with the RSA factory.

*Val Munday*

## Moving House?

If you are about to move, or have moved, please don't forget to let us know!

Contact us at [info@enfieldsociety.org.uk](mailto:info@enfieldsociety.org.uk), or call 020 8367 3171 to speak to the Membership Secretary.



# Society Guided Walks

**Travel details are correct at press date but TES cannot be responsible for alterations. Always check for rail changes, especially at weekends (either via 03457 48 49 50) or the train company's own web-site). Use TfL web-site for tube, DLR, London Overground and TfL buses (or ring 0343 222 1234).**

**Groupsave discount of about 34% is available on most non-TfL trains but is not usable with any Railcards.**

**See TfL/National Rail publicity maps for Freedom Pass boundaries and Oyster/Travelcard zones and always bring your card(s). County Council web-sites display current bus timetables for non-TfL services.**

**Please wear walking boots or stout walking shoes and, always, either remove muddy boots or cover them with plastic bags before entering a pub or tea shop.**

**Tues 19 Nov. River Thames.** Meet **11.15** in entrance foyer to Richmond Station. Either 20 to 30 mins journey by South Western Railway from Waterloo and Vauxhall mainline stations, or 30 mins by District Line from Victoria, or 50 mins by London Overground from Highbury & Islington.

About 3½ mile semi-rural walk with attractive river scenes along the south bank of The Thames to Kew Bridge/Green for lunch. Bring lunch or food available. Then a short walk of about one mile ending at Kew Gardens Station. *Contact on day of walk only:* 07506 334 019. Leader: Peter Mackey

**Sat 23 Nov. Epping Forest.** Meet **10.20** at 121 bus terminus in Enfield Island Village (also served by 491 bus). At print date 121 buses at 09.33 and 09.42 from Church Street, Enfield Town, are scheduled to arrive at 10.02 and 10.12. Allow ample time for cycle works in Hertford Road.

A 6½ mile linear walk through the Forest with late Autumn colours. The morning walk of 3¾ miles ends at the Royal Forest Hotel/Butlers Retreat lunch stop—only 10 mins from Chingford bus/train station.

If joining for second half of walk, be at lunch stop by **13.30** (but earlier for lunch!). Afternoon walk of about 2¾ miles ends at Buckhurst Hill Station (Central Line) but with a shorter option. Contact: 020 8882 3602 or 07534 433 578. Leader: Martin Langer

**Wed 4 Dec. Discovery Walk: Camden Railway Heritage.** Meet **10.30** Great Portland Street Station (Circle, Metropolitan and Hammersmith & City

Lines). Through Regent's Park and up Primrose Hill for views across London. Lunch stop in Regent's Park Road. Bring lunch or food available. Then the fascinating Camden Railway Heritage Trail ending near Chalk Farm Station. Shorter options. *Contact on day of walk only:* 07425 136 628. Leader: Margaret Redman

**Mon 9 Dec. Christmas Lights.** Meet **15.00** near station exit into Green Park at Green Park Station (Victoria, Jubilee and Piccadilly Lines). 2 to 2½ hour linear walk with a selection of Christmas lights and related scenes, many of which are away from the usual crowded tourist routes. Shorter options. Leader: Ian Reynolds

**Sun 15 Dec. Discovery Walk: City of London.** Meet **10.30** Blackfriars Underground Station (Circle and District Lines).

6 mile circular walk via historic buildings, back-lanes and alleyways with notable sights including Roman remains, Sir Christopher Wren buildings, 16th/17th Century livery companies and River Thames. Many shorter options. Lunch stop near Bunhill Fields (pubs or bring lunch). Walking will be for 4 to 4½ hours in duration and will be at a halting/moderate pace allowing time to view sights en-route. Joint walk with Hampstead Ramblers and North West London Ramblers. Contact: 07590 604 391. Leader: Hadi Samsami

**Sat 21 Dec. Christmas in St Albans.** Meet **10.35** St Albans City Station. Either by Thameslink trains at 09.51 or 10.06 from St Pancras International Station (platform B), or by 84 bus from Potters Bar Station at 09.28 or 09.43. *Note:* car parking difficult at/near station.

In morning a TES 3½ to 4 mile attractive semi-rural and parkland walk ending near the Cathedral and City centre for lunch. Then the time is yours to spend independently. The Cathedral has the popular "Carols on the Hour" event—each service takes about 30 mins with the last at 16.00. The City centre will have Christmas lights, the Charter Christmas Market and, in the Town Hall, the Museum, Gallery and historic County Court with cells to view.

The 84 bus and frequent buses to City Station depart from near the Town Hall. *Contact on day of walk only:* 07490 480 251 (no voicemails). Leader: Stuart Mills

**Sat 28 Dec. Hampstead Heath.** Meet **10.30** Lauderdale House café, Waterlow Park, Highgate Hill. The Waterlow Park bus stop outside the café is about 20 mins

by 210 bus from Finsbury Park Station (Wells Terrace bus station).

About 6½ to 7 mile linear walk across the Heath and environs ending at a point for return transport. Shorter options. Bring lunch or food available. *Contact on day of walk only:* 07490 480 251 (no voicemails). Leader: Stuart Mills

**Sun 5 Jan. Epping Forest.** Meet **10.34** Enfield Lock Station (either 10.25 Greater Anglia Hertford East train from Tottenham Hale or by 121 bus). 9 mile moderately paced, undulating, linear walk from the Lea Valley into Epping Forest via High Beach lunch stop (pub, sandwich bar or bring lunch) and Loughton Camp, ending at Chingford Station. Muddy in places especially after wet weather. No shorter option. Joint walk with Hampstead Ramblers. Contact: 07590 604 391. Leader: Hadi Samsami

**Thurs 9 Jan. Discovery Walk: In the footsteps of Dickens.** Meet **10.45** Embankment Station (Circle, District and Bakerloo Lines). Today's linear walk highlights locations associated with Dickens during his time in London, with some significantly influencing his writings. Lunch stop near St. Paul's (bring lunch or food available). Route ends in Borough High Street, but shorter options. *Contact on day of walk only:* 07506 334 019. Leader: Peter Mackey

**Wed 15 Jan. Richmond Park.** Meet by **11.00** in entrance foyer to Richmond Station and be ready to catch 371 bus at 11.06 to Richmond Gate. *See Tuesday 19 Nov walk for train journey times.* About 6½ mile linear walk through Richmond Park to Ham Common (lunch stop) before reaching The Thames to return to Richmond. Shorter option. Bring lunch or food available. Leader: Mick Spinks

**Sat 25 Jan. Historic Southwark.** Meet **10.30** St. Paul's Station (Central Line)—toilets nearby in One New Change Shopping Centre, Cheapside. 6 to 7 mile linear walk exploring North Southwark with historic buildings, major landmarks and ancient alleyways in London's former entertainment centre. Lunch stop near City Hall. Bring lunch or food available. Route ends at Westminster Station. Shorter options. Contact: 07904 193 098. Leader: John West

**Sat 1 Feb. Lee Country Park.** Meet **10.24** Cheshunt Station (10.14 London Overground train from Southbury Station or 09.55 Greater Anglia Hertford East train from Tottenham Hale). About 6 mile circular walk with a mix of waterways, lakes and meadows, including the



# Society Guided Walks

permissive link into Rammey Marsh. Option to end from lunch stop in Waltham Abbey. Bring lunch or food available. Contact: 07900 286 254. Leader: Mike Cranstone

## **Wed 5 Feb. Discovery Walk: River Lea and Bow Waterways. Meet 10.30**

Hackney Wick Station (about 15 minutes from Highbury & Islington on London Overground Stratford service).

About 3 hour, 4 mile, linear walk exploring the natural and man-made waterways in and around the Olympic Park that create contrasting scenes. Coffee/toilet stop en-route. Route ends near Bow Church (DLR) and Bow Road (District Line) stations. *Contact on day of walk only:* 07425 136 628. Leader: Margaret Redman

## **Sat 15 Feb. North Mymms Snowdrops.**

Meet **10.25** outside White Hart pub, South Mimms Village (10.13 84 bus from Potters Bar Station). *Please do not park in the pub car park.*

A morning walk in memory of Roy Nicholls' last outing that, hopefully, will coincide with the extensive snowdrop display. Depending upon weather conditions, the walk will be between 4¼ and 5¼ miles in length and may be muddy in places. We hope to return and finish in South Mimms by 13.30. *Contact on day of walk only:* 07490 480 251 (no voicemails). Leader: Stuart Mills

**Thurs 20 Feb. Rural London. Depart 11.00** from outside café/toilets at Kenwood House, Hampstead Lane NW3. About 30 mins by 210 bus from Finsbury Park Station—Wells Terrace bus station.

A surprisingly green linear walk linking Hampstead Heath and Hampstead Garden Suburb with the Dollis Brook Trail towards Barnet. Maximum distance about 7 miles but shorter options by either bus or from Northern Line stations, including from Finchley Central lunch stop. Bring lunch or food available. Leader: Mick Spinks

## **Sat 29 Feb. West London Open Spaces.**

Meet **10.30** Ealing Broadway Station (about 30 mins by Central Line from Oxford Circus). Toilets on station platform.

7½ mile linear walk via Walpole, Gunnersbury and Chiswick Parks, all with historic houses, ending at Turnham Green Station. Shorter options. Lunch stop near Kew Bridge/Strand on the Green. Bring lunch or food available. Contact: 07904 193 098. Leader: John West

*Stuart Mills*

## Come and enjoy a walk with us

Medical studies and academic research into health and well-being continues to tell us that regular walking is good for both our physical and mental health. Walking with a group provides the opportunity to explore new areas that you may not otherwise visit and it provides social opportunities. Our walks range from discovery walks in parts of central London to countryside walks. All walks are arranged using public transport.



On a warm day in August members visited the Darent Valley in Kent, following the river through ancient farmland, past medieval watermills and Roman remains. The picture shows some of the group enjoying the views across the valley towards the Sevenoaks Greensand Ridge. If you have not yet joined us on a walk please come along, you will be very welcome.

*John West*

## Joining The Enfield Society

Membership of the Society costs just £5 per per person per calendar year. Members are sent quarterly newsletters and have the opportunity to participate in walks, talks and other activities. Non-members are welcome to come along to events for a charge of £1 before deciding whether to join. Why not give a gift membership by paying for somebody else—a welcome present, perhaps? You can join or renew membership, or give it as a gift, on our web-site [enfieldsociety.org.uk](http://enfieldsociety.org.uk) or by sending your name and address, telephone number and e-mail address to Membership, The Enfield Society, Jubilee Hall, 2 Parsonage Lane, Enfield EN2 0AJ with payment of £5 for an individual or £10 for a joint membership.

## Trees Group

Thank you to all our members who have provided saplings as a result of an appeal in our last newsletter. We still have some room for new saplings at our tree nursery at Trentwood Side. We are particularly keen to receive Beech, Birch, Hornbeam and Maple. If you have any unwanted saplings growing in your garden please contact us on [trees@enfieldsociety.org.uk](mailto:trees@enfieldsociety.org.uk).

If you walk through St Andrew's Churchyard towards the Civic Centre you will see that a new Tulip tree has been



planted by the Society close to the Church Lane entrance. The tree was planted earlier this year to commemorate all the work that Christopher Jephcott carried out for the Society. A plaque has been provided beside the tree. Despite some very dry weather during the summer the tree is looking healthy and we are looking forward to it growing into a permanent tribute to Chris and a contribution to greening the Town Centre.

*John West*

## Publications

Packs of four different Christmas cards (see illustrations in autumn newsletter) are on sale at £1 as are the books, badges, walks guides and other items detailed in the order form sent with last newsletter. I am glad to report that we have been able to persuade Godfrey Maps to reprint the Lower Edmonton map which we now have on sale, price £3 each.

All items can be purchased at Enfield Society meetings at Jubilee Hall. Waterstone's Bookshop and the Dugdale Centre shop sell most Enfield Society publications but not all those of other publishers. Christmas cards are usually available from Gray's Newsagents and the Post Office in The Town.

If ordering by post, please enclose a cheque made payable to The Enfield Society and send to Publications, The Enfield Society, 2 Parsonage Lane, Enfield EN2 0AJ. We can only accept payments by debit or credit card through PayPal if you order on line from our web-site. You do not need a PayPal account and this is convenient for many, especially those living overseas as currency conversions are dealt with automatically.

*Monica Smith*

## Society Directory

*Joint Presidents:* Monica Smith MBE  
Colin Pointer

*Vice Presidents:* Lord Graham of  
Edmonton, Mr M. Saunders MBE,  
Mr A. J. Skilton, Mr L. Will

*Chairman:* Dave Cockle

*Hon. Secretary:* Richard Stones

*Hon. Treasurer:* David James

*Management Committee:* Dave Cockle,  
Tony Dey, Robert Fowler, Stephen  
Gilburt, David James, Joyce James,  
Nigel King, Andrew Lack, Janet  
McQueen, Stuart Mills, Hilary Morris,  
Val Munday, Anne Osborne, Richard  
Stones, John West, Bill Wilson.

*Office:* Jubilee Hall, 2 Parsonage Lane,  
Enfield EN2 0AJ  
Telephone: 020 8363 9495  
Messages left on this number will be  
dealt with as promptly as possible.

### *How to contact us*

*Web-site:* enfieldsociety.org.uk

*E-mail:* info@enfieldsociety.org.uk

To contact one of our specialist groups  
either call the number given or use our  
general enquiries e-mail (above) and we  
will direct your message as appropriate.

*Architecture and Planning:* Bill Wilson

*Cleaner Neighbourhoods Group:* Nigel  
King

*Coach Outings:* Janet McQueen,  
020 8367 7374

*Conservation Areas:* John West,  
020 8886 6080

*East Enfield and Edmonton:* Val Munday

*Footpaths and Walks:* Stuart Mills

*Green Belt:* Dave Cockle, 020 8366 2242

*Heritage at Risk:* Janet McQueen,  
020 8363 9495

*Historic Buildings:* Stephen Gilburt,  
020 8363 0031

*Jubilee Hall bookings:* Janet McQueen,  
020 8363 9495

*Membership:* Joyce James, 020 8367  
3171

*Press:* Angela Bowring

*Publications:* Monica Smith

*Publicity:* Bob Fowler, 020 8363 5732

*Records and Research:* Hilary Morris,  
020 8372 3080

*Trees:* John West, 020 8886 6080

The Enfield Society is a limited  
company No. 312134 and registered  
charity No. 276451.

Printed by Premier Group London,  
ISSN 2042-1419 (print), 2042-1427  
(web)

## Edmonton & Eastern Enfield Group

We had an interactive meeting on 2nd October when Sue McDaid (Head of Regulatory Services with Enfield Council) took many questions concerning environmental crime, which is a real problem in certain roads in Edmonton. Problems are occurring with conversion of houses into houses of multiple occupancy, often without planning permission, and insufficient bins provided for household rubbish. Sue gave details of future plans for licensing of landlords which should help raise standards in the private rental sector.

I was pleased to see some new faces at the meeting including a representative from REACT (Residents of Edmonton Angel Together) who are keen to work with The Enfield Society to improve the street scene at The Angel Edmonton. We plan to have a joint walk about the area to see first hand some of the problems on the streets with litter and fly tipping.

On Wednesday 11th December at 7.30pm the group will be holding an open meeting at All Saints Church Hall, Church Street, Edmonton. We have a guest speaker from Crosstree Real Estate Partners, Sabri Marsaoui, who is the Edmonton Asset Director, will give a presentation on development plans for Edmonton Green Shopping Centre. This should be an interesting meeting and there will be plenty of time for questions and answers afterwards. All members of the Society are welcome to attend this meeting.

*Dave Cockle*

## New members

A warm welcome to the following new members of the Society, who have all joined since our last newsletter published in August;

Mr & Mrs J & J Ainsley, Mr P J Baker, Ms M Bond, Mr & Mrs C & D Clark, Mr G Cleur, Ms E E Cohen, Mr N Constantindes, Ms A Deale, Mr S Evans, Mr & Mrs N & S Fisher, Ms C M Ford, Mr & Mrs M & M Fox, Mr R J Goodman, Mr J Harris, Mrs H Harris, Mrs L Hennessey, Mrs V A Hill, Mrs C Holder, Ms F Howard, Dr & Mr C Jenkins, Mrs S Legge, Mrs A R Long, Mrs S Melton, Mr F Miles, Mrs B A Moseley, Mrs E Nicholls, Mrs C Patel, Ms J E Pearson, Mrs I Pepe, Ms E Quayum, Mrs C J Stevens, Mrs E Tyler, Mr C Voulgaris, Mr M Walling, Mr & Mrs C P Wenz and Mrs V. Windsor.

*Joyce James*

## Visit to Piccotts End

On 20th August a group of Enfield Society members had the opportunity to visit the village of Piccotts End near Hemel Hempstead in Hertfordshire and see the remarkable survival of late medieval religious wall paintings in a Grade 1 listed timber framed hall house built in 1527. The house originally had a service bay, parlour and open hall. The paintings dating from soon after the building's construction include the Virgin Mary holding the body of Jesus after he had been taken down from the cross, Christ in Majesty holding an orb and with his right hand raised in blessing and John the Baptist baptising Jesus in the River Jordan. At the sides are views of St Peter holding the papal staff and wearing the papal triple tiara and St Clement (Clement VII was Pope in 1527). Below are images of St Catherine of Alexandria and St Margaret of Antioch in early 16th century costume. They are shown with the instruments of their martyrdom; a wheel and a dragon respectively.



Within ten years the Reformation had arrived in England and the faces of the saints were scratched off to prevent them being worshipped as idols. The paintings were then covered with six layers of wallpaper over the following centuries and were not discovered until 1953.

Janet McQueen, one of the current owners of that part of the house with the wall paintings, explained the iconography of the paintings and outlined the history of the house, including the time when it became Britain's first free cottage hospital in 1827. A much later period in the history of Piccotts End could be seen opposite the house—a Second World War Anderson air raid shelter!

This most interesting and enjoyable afternoon concluded with a delicious cream tea which Janet provided.

*Stephen Gilburt*

