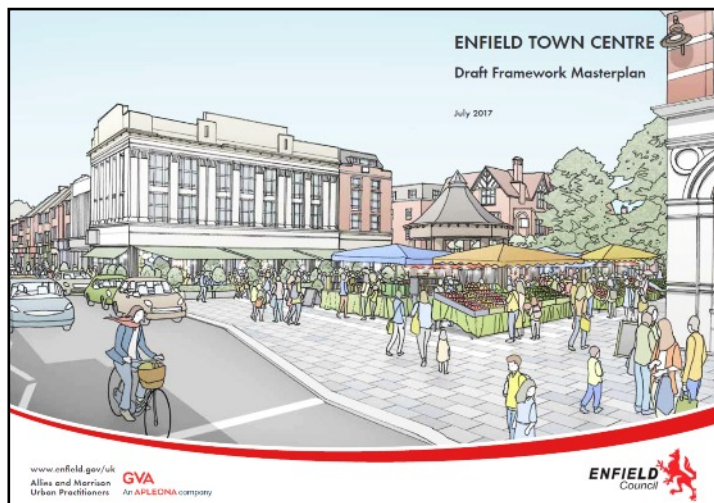


What do you think of the Enfield Town masterplan draft?



Enfield Council have published a "Draft framework masterplan" for Enfield Town centre, open for public comment until Monday 25th September 2017.

The plan sets out a vision of how the town might develop in the next 5, 10, or more years, considering the following aspects:

- **More people:** the population is expected to grow, and they will need somewhere to live.
- **More jobs:** we should provide local work, and office jobs seem most appropriate.
- **More liveable:** we must protect and enhance the heritage and green spaces while providing for more leisure and local activities.
- **More connected:** travel to and around the town must be easy and welcoming, by cycle or other means.
- **More markets and street life:** the town should have a pleasant and comprehensive shopping environment.
- **More evening activity:** the town should have a vibrant evening economy that will attract people to spend time there.

Suggestions for development are based on an analysis of the existing structure and the character of five different areas, as shown on the map reproduced here. Specific development opportunities are listed and discussed for each area, a total of 18.

A few examples are:

Enfield Town station and Genotin Road car park

- High density development is appropriate in this sustainable and accessible location, with new buildings capable of being taller than those around them subject to other policies in the Plan.
- Appropriate uses include offices, residential, commercial ground floor uses and car parking.
- Development should make provision for a footbridge link across the railway between the Genotin Road car park and the Tesco site.

Portcullis Lodge site

- Possible residential use or development of the estate of the nearby schools, in the long term.

Magistrate's Court building, Windmill Hill

- Makes a very significant and positive contribution to the character of this part of the conservation area.
- Appropriate uses would include restaurant or café uses at the front, with business space within the building.

Little Park Gardens bus station

- In the short term, offer more of an attraction that will increase the sense of arrival and footfall along the western end of Church Street.
- In the longer term, explore the opportunity to establish a public transport hub near Enfield Town station.

The draft discusses the problem of empty shops (which it calls "a steady decline in retail offer"), especially at the west end of Church Street, noting that rents are the same for these smaller and less modern premises as for those further east. Suggested solutions are improving links to Enfield Chase station, enhancing the public realm and the evening economy, and providing an "anchor" such as a "destination restaurant" in that area.

The 100 page document is attractively produced, with aerial and street photographs, maps and artist's impressions of how the town might look in future. There is an extensive analysis of the physical social and economic context which forms the background to the plan. It contains rather a lot of planning jargon which would have been better translated into plain English to make it more readable by the wide population from whom comments are being sought, and there are some confusing errors in the names of places such as various references to the non-existent "High Street". Nevertheless, it is an important document that, if accepted, will influence the character of Enfield for many years in the future so it is important that those who live or work in the area should let their views be known while it is still in a draft stage.



Map from page 50 of the masterplan, showing the five "character areas" with the roles suggested as appropriate for each.

The Enfield Society's Architecture and Planning Group will be sending in comments once it has had time to study the draft. You can view it and submit comments online at www.enfield.gov.uk/enfieldmasterplan or as a hard copy at the Civic Centre and at Enfield Town, Ordnance Unity Centre and Palmers Green Libraries.

John Davies and Leonard Will

Green Belt, planning and conservation

Planning applications

The Enfield Society's Architecture and Planning Group examines planning applications made to the Borough Council, and submits comments where appropriate. A recent proposal is described below.

Chase Farm Hospital site, adjacent to Lavender Hill and The Ridgeway.

Linden Homes propose building 138 new homes of 2 to 3 storeys, most with gardens and a "large" open space. The outline proposals were rather bland and bleak, but modifications negotiated by the officers have softened the design, especially on the perimeter of the site.

(Revised application reference 16/05535/RM)

Planning applications can be seen on the Council's web site at <http://planningandbuildingcontrol.enfield.gov.uk/online-applications/>

John Davies

Trent Park plans approved

We are pleased to note that on 18th July Enfield Council approved the planning application (17/02775/FUL) by Berkeley Homes to build 262 homes, 58 of them affordable, on the site of the Trent Park campus, and to allocate the ground floor and basement of Trent Park Mansion for use as a museum recording its wartime role in listening secretly to the conversations of German officers accommodated there.

Some of the 1960s university buildings will be demolished, revealing the landscape views, and the swimming pool and orangery will be restored.

Rain gardens



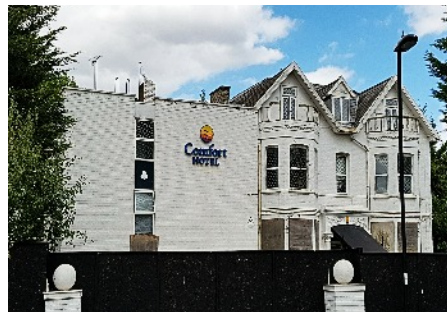
As more of our land is covered with hard impermeable materials, a lot of rain water goes straight into the sewage system which can soon be overloaded. Rain gardens have been designed to take water off the highway and into a soft landscaped area where the water can filter through the ground and be soaked up by plants and shrubs rather than going into the sewers. The Council's Regeneration and Environment department are working to set up these rain gardens in conjunction with the "Cycle Enfield" developments. cycleenfield.co.uk/cycling-news/what-is-a-rain-garden/

Conservation areas

At regular intervals, the Conservation Area Management Proposals for each of the Borough's 22 conservation areas are reviewed and updated. The aim is to ensure that unauthorised or unsympathetic developments are not taking place and that there is no deterioration in any of the historic buildings. This could include advertising hoardings, additional signage or the removal of garden walls for car parking. Site visits involving representatives of the local study groups and council officers have recently taken place at a number of Conservation Areas and the results of each will be reported to the Council's Conservation Advisory Group in the autumn. This committee has representation from most of the conservation areas and The Enfield Society. Where there is no local group the Society assists the Council in monitoring those areas.

The Montagu Cemeteries Conservation Area is one area where I have recently been involved. This fascinating part of Edmonton with 3 separate cemeteries has historical significance and some buildings and monuments that need repair, restoration and enhancement.

The Comfort Hotel Saga



Originally a Victorian residential property, the hotel, located in Rowantree Road, is constructed over four floors. Although much altered with an unsympathetic side extension, the original turn of the century part of the building is attractive and in keeping with the area.

The business had been operating at a loss and ceased trading in October 2014. There was no interest in buying the building as a hotel. Conversion of the site to residential was therefore inevitable.

The first application was submitted in January 2015. The proposal was for the demolition of the hotel and erection of a 4-storey block comprising 21 flats. The Architecture and Planning Group were disappointed the proposal did not retain the existing building, but the developer insisted this was not viable owing to the requirements for the converted units to comply with current building regulations.

The proposed block appeared very unattractive and massive compared with

This is particularly the case in the Tottenham Park Cemetery and the Society is discussing these concerns with the Council. If you are aware of issues of concern in any Conservation Area, please raise it with the Society and we will take them up with the Council Officers or Councillors as appropriate.

John West



There are many beautiful and well-tended graves at Tottenham Park Cemetery, but some areas are overgrown and the chapel is derelict, as shown here. It was opened in 1912 by the Tottenham Park Cemetery Company, and originally used as a paupers' cemetery. Currently, it is used primarily for Muslim burials. The "Friends of Tottenham Park Cemetery" was established in the early 1990s, and is a registered charity.

the front elevation of the hotel. It would also increase the density of the site. The new front elevation was out of character with the surrounding Victorian developments. Enfield Council refused the application in April 2015. The reasons included overdevelopment and not respecting the character of the area.

A second application was submitted in October 2015. The proposal was again for the demolition of the hotel, but this time, the erection of a 3½ storey block comprising 16 flats. It would be within a footprint reduced from the hotel and no higher. The developer claimed the application respected the character of the locality.

The Group felt this application was better, with the bulk and mass reduced. It was, however, refused by the Council in March 2016. Reasons again included overdevelopment of the site and dominating the character of the area. The developer appealed, but this was dismissed in September 2016.

A third application was submitted in September 2016 for the erection of a 3-storey block of 13 flats. This was withdrawn in October 2016 following officer advice it would be refused, but another approach could be to convert the building. Consequently, a fourth application (17/02775/FUL) was submitted in July 2017 for the conversion of the hotel into 10 flats.

Bill Wilson

Cleaner Neighbourhoods and Trees

Jubilee Hall in summer



The front of our headquarters, Jubilee Hall, is looking attractive this summer, with hollyhocks, verbena and other flowers, thanks to Linda Miller, who maintains the garden as well as organising our monthly Tuesday morning meetings.

The birch tree is interesting, because its leaves are not the normal birch shape, shown on the left, but much more indented, as on the right.

It is a variety known as Swedish birch, *Betula pendula* 'Laciniata'.

Sad loss on Lavender Hill



David Nash reports that we have lost one of the "magnificent oaks" which he wrote about in our Winter 2016 issue. Thomas Forster, an Arboricultural Officer with Enfield Council, tells us that surveying the tree using a sound mallet and probe identified major decay and cavities within the root ball all around the tree. An internal decay test (a 'Picus test') was done using technology that can visually indicate the internal structure. This confirmed such extensive heartwood decay that the tree was liable to collapse and had to be removed.

We were glad to see that a new oak and a Scots pine have recently been planted nearby. The Council will consider replacing the felled oak later this year.

Cleaner Neighbourhoods Group



Our team of volunteers at the start of our Southgate litter pick in June were pleased to receive support from the local police officer

The Cleaner Neighbourhoods Group organised six litter picking events during the first half of the year resulting in the collection of one hundred and twelve bags of litter. The record was thirty seven bags from Trent Park at the end of March. Notable events included Enfield Lock as part of Keep Britain Tidy's *Great British Spring Clean* and recently, in June, around Southgate Circus as part of the Southgate & District Civic Trust's events for *Civic Week*.

These events illustrate how we can join with other like minded organisations to our mutual benefit. In the case of the Southgate & District Civic Trust, they based their Civic Week in a vacant shop in Station Parade with a display showcasing their own activities together with space allocated to The Enfield Society where we were able to incorporate our own display. Twelve volunteers took part in the litter pick and we collected twenty bags of litter. Predominant among the rubbish collected were hundreds of cigarette ends – Southgate must be populated by large numbers of heavy smokers!

The Cleaner Neighbourhoods Group now has over thirty participants who have registered their interest in joining our events from time to time. Most events are attended by a dozen or so members, but it is apparent that a very useful contribution can be made by smaller groups with a particular interest in a specific local area. With this in mind, we are looking for members who can lead groups in their local areas.

I have in the past paid tribute to CleanupUk, a charity which helps anyone wishing to form a litter picking group. They have helped us with advice and equipment and are available to help anyone else who is interested. If you would like to become more involved by leading a group of our members in your local area, please contact me either by email to n.king@enfieldsociety.org.uk or telephone the office on 020 8363 9495 and leave a message.

Nigel King

Sales Table

Enfield Society Christmas cards on sale this year are Whitewebbs House, Council offices, 1 Gentleman's Row and The Crown and Horseshoes. Packs of five cards cost £1.25.

Also available are packs of four different view cards. All publications will be available at the Enfield Society stall at the Town and Country Show and Waterstone's Bookshop in Church Street, Enfield, stock all our publications. Forty Hall shop and Forty Hall Farmshop stock some books and other items such as footpath maps and guided walks. Other outlets, Myddelton House, Enfield Town Post Office and newsagents in The Town sell some items.

If ordering by post, please complete the enclosed order form and send with a cheque or order on-line from the Enfield Society website (enfieldsociety.org.uk). The only way we can accept payments by debit or credit card is through the website: card payments are handled by PayPal but you do not need to have a PayPal account. This is convenient for those who are not able to visit our sales tables or other outlets in person and especially for people living overseas as currency conversions are taken care of automatically.

Shortly after the enclosed order form was printed I received a copy of a new publication, "Dispensing Notes – stepping stones towards an autobiography". It is by Frank Bayford, for many years a favourite speaker at Jubilee Hall. Frank has lived in Enfield all his life and the first part of this book is mainly about his early years, his education at St. Michael's Primary and Enfield Grammar and his career as a pharmacist especially at Chase Farm Hospital. His long interest in music and success as a composer are covered in the later part of the book.

If you would like a copy, it will be on sale (£9.50) at the Town and Country Show and at Jubilee Hall in September. For a copy sent by post, please add "Dispensing Notes" to the enclosed order form and £9.50 to the total cost of your order.

Monica Smith

Other organisations' events

This list gives a selection of forthcoming events arranged by organisations other than The Enfield Society. Other events and updates may be found on our web site at www.enfieldsociety.org.uk and on the Enfield Council site at new.enfield.gov.uk/services/leisure-and-culture/

2nd Wednesday of each month, 12.30-1.00pm, St Mary Magdalene Church, Windmill Hill. Lunchtime music recital.

Until 7 January 2018, Dugdale Centre. Terrific Toys: made and played in Enfield: exhibition at Enfield

Sunday 20th August, 12 noon onwards, Chase Green. Friends of Chase Green "family" picnic on the Green. A chance for local residents to come together to exercise their rights of using the green for "lawful pursuits and pastimes" and perhaps get to know their neighbours better. Nothing formal, every family group to bring their own food and drink, chairs, games, balls – but we hope there will be a lot of joining in together to kick a ball around etc.

Sunday 27th - Monday 28th August, Forty Hall Farm. Enfield Food Festival.

Saturday 2nd September, 7pm, Forty Hall. Murder on the Terrace: an original murder mystery.

Thursday 7th - Sunday 10th September. Heritage Open Days (excluding London). A chance to visit buildings normally closed to the public.
www.heritageopendays.org.uk

Friday 8th September, 7.30 for 8pm, Jubilee Hall. Forty Hall: hidden secrets – archaeological monitoring of refurbishment work 2012-14, by Neil Pinchbeck, EAS. [EAS]

Tuesday 12th September, 8pm, Jubilee Hall. German kings and the Holy Roman Empire – a talk by Robin Blades, followed by light refreshments and the Branch AGM. [HA]

Saturday 16th and Sunday 17th September. Open House London. Buildings in London open to the public.
www.openhouselondon.org.uk

Wednesday 20th September, 7.45 for 8pm, Jubilee Hall. Chase Farm Schools Part 2 – hospital, by Frank Bayford. [EHHS]

Saturday 23rd and Sunday 24th September, Town Park. Enfield Town Show.

Tuesday 10th October, 7.30 for 8pm, Jubilee Hall. The best of intentions: Britain's part in the origins of the Arab-Israeli conflict, by David Blair, Daily Telegraph. [HA]

Friday 13th October, 7.30 for 8pm, Jubilee Hall. Medieval kremlins and monasteries on Russia's Golden Ring, by Stephen Gilbert, EAS. (EAS and The Enfield Society joint meeting).

Friday 10th November, 7.30 for 8pm, Jubilee Hall. A Glimpse of the Black Death at West Smithfield, by Don Walker, MoLA Osteologist. [EAS]

Tuesday 14th November 2017, 7.30 for 8pm, Jubilee Hall. The British Jewish experience of the First World War, by Paula Kitching. [HA]

EAS: Enfield Archaeological Society. Visitors are very welcome (£1.00 per person). www.enfarchsoc.org/index.html

EHHS: Edmonton Hundred Historical Society. Talks are free to members – there is a charge of £1 per head for visitors. The EHHS website had not been updated with 2017 talks by the time we went to press, but we shall add EHHS meetings to the diary of events on our website at enfieldsociety.org.uk/diary.htm as soon as we have details.

HA: Meeting of The Historical Association, North London Branch. Non-members are welcome (£1 per meeting). More details from the Branch Secretary, Robin Blades (020) 8368 5328, robin.blades@outlook.com. Associate Membership available for £5 a year for an individual or £8 a year for a couple.

Waste is not wasted: making fertiliser and electricity at Cattlegate Farm

On Tuesday 20th June, Dave Cockle organised a visit for Enfield Society members to Cattlegate Farm, Cattlegate Road in Enfield.

We were told that the family had been at the farm since 1928. The farm was originally arable and they expanded and diversified into pick your own but this wasn't successful. They now grow herbs for the culinary trade including 20-30 acres of mint. There are also 1000 acres of wheat and 1000 acres of barley, rape and oat crops, whilst 300 acres of grass is dedicated to equestrian use.

In 2008 the farm decided to start composting on a small scale – then a 25,000 tonne purpose built site followed for anaerobic digestion of waste food from restaurants and universities. The farm is well positioned for the London trade and they have a large catchment area.

First we visited the area where green waste composting takes place. When green garden waste arrives at the site it is fed into a shredder which crunches it down to a uniform size. The green waste is then built into long triangular shaped windrows in a large open-air yard, which helps the waste to break down naturally. The key to this process is that it is aerobic i.e. oxygen helps the green matter to break down. When fortnightly green bin collection was introduced it caused an

issue because anaerobic breakdown was starting to take place with the green clippings making the waste unusable for composting. Now bacteria is sprayed onto the green matter to promote the aerobic digestion and it is turned regularly to aid the composting process. The oxygen, temperature and moisture content of the windrows is monitored and adjusted. After 6 weeks the final compost is ready for screening and removal of impurities. Compost in the size range of 0-10 mm is sold for horticultural use and in the range of 0-30 mm for agriculture.

Secondly we visited the area where food waste is processed. Anaerobic digestion, i.e. without oxygen, is involved here. 80-100 tons of waste comes in during a day, some still in its original packaging. The packaging is removed and then the food waste is fed into the anaerobic digestion tanks where, during the breakdown of the matter, methane is released. The methane is piped to a generator where the gas is turned into electricity and fed into the National Grid. 1.5 MW (megawatt) of electricity is produced which is enough to power 2,600 homes. The process also generates heat that could be diverted to local businesses, amenities and housing. The material left after the anaerobic digestion, known as digestate, is high in nitrogen and nutrients and can be used as a fertiliser on the farm reducing the need for artificial chemical and fertilisers.

It was a fascinating visit and great to see that waste is put to good use, reducing landfill. A big thank you to our hosts the Williams family at the farm who made the visit possible.

Val Munday



The two large anaerobic digestion tanks



The digestate drying and processing plant

Enfield Society events

Tuesday mornings 10.00 for 10.30am, Jubilee Hall. No tickets required.

August. No meeting.

Tuesday 26th September. *The forgotten houses of Tottenham*, by Valerie Crosby.

In this talk Valerie Crosby, Archives Assistant at Haringey Archives and life-long resident of Tottenham, will trace the history of some of the long-lost, splendid houses that once stood in Tottenham's former rural landscape. Valerie will illustrate her talk using photographs and paintings from the historical collections held at Bruce Castle.

Tuesday 31st October. *Healthy eating – a different view*, by Philip Ridley, Director, Weston A. Price Foundation.

Philip will discuss the principles of healthy traditional diets identified in the pioneering work of Dr Weston A. Price. The talk will include slides from Dr Price's travels around the globe during the early 20th century. Dr Price's conclusions about diet were based upon his first-hand experience of the food choices and food preparation techniques of healthy non-industrialized peoples from around the world and his work continues to radically challenge the established orthodoxy.

Tuesday 28th November. *Urban orchards and edible landscapes*, by Jo Homan.

Jo works with the Urban Orchard Project and with Edible Landscapes London (ELL), based at Finsbury Park. ELL trains volunteers to propagate plants which are then given away to community food growing projects. The Urban Orchard project works with communities to plant, manage, restore and harvest orchards in urban areas. Jo will talk about her work organising and running training sessions for volunteers for both these projects and recent successes in creating "lush cities across the United Kingdom swathed in fruit and nut trees".

Tuesday 12th December. *A brief history of pantomime*, by Marlene McAndrew. From the Greek pantomimi through to Marie Lloyd, panto horses, cows and geese, 'orrible pies in 'orrible kitchens, all-join-ins and "He's behind you!" – a lively look at the origins and development of Britain's best-loved entertainment.

Legacy

The Enfield Society gratefully acknowledges receipt of a legacy from the estate of the late Brian Frear, whose obituary we published in our issue 204, Winter 2016.

The Chairman's column



At the recent AGM, some of you kindly responded to my plea for volunteers and I would like to thank you for this. TES is an active Society, which has considerable involvement in many local issues. This includes taking minutes at meetings, leading walks, staffing our stall at shows, lending a hand at our tree nursery and providing refreshments at Jubilee Hall meetings. Each role is highly valued. As we can never have too many volunteers, please do not hesitate to contact us if you have some time to spare - the more volunteers at our behest the less onerous will be the duties of each individual, as it will be possible to draw up a rota. In particular, TES would welcome someone with experience in the financial sector to assist our Treasurer.

I recently attended a meeting of The London Greenbelt Council, an influential campaigning group whose membership represents one hundred civic amenity groups including TES. One interesting idea currently under discussion is to create a National Park of the entire London Greenbelt, thereby putting an end to the constant "nibbling away at its edges". Comparison was made with Toronto in Canada, which had experienced population growth similar to that in London. There a protected green

ring has been established and legislation passed to ensure that a percentage of the land is dedicated to growing food crops. The London Greenbelt Council is planning an initial meeting with The National Trust, The Campaign for the Protection of Rural England, Open Spaces Society, Royal Society for The Protection of Birds and other organisations in order to take the idea forward. One of the key drivers for this initiative is to improve the poor air quality in London and its suburbs. It is envisaged that more tree planting would take place in the Greenbelt.

Finally I should like to pay tribute to Chris Jephcott, our former President, who died on 8th June 2017. He left a tremendous legacy of improvement in our Borough by campaigning and lobbying those in power. We are especially indebted to Chris for the many conservation areas in the Borough. One of his greatest achievements was to save so many of the fine Highlands Hospital buildings by conversion to flats in Highlands Village. The developer had originally advocated wholesale demolition of the entire site.

Dave Cockle

Evening meetings, 7.30 for 8 p.m. at Jubilee Hall. No tickets required

August. No meeting.

Monday 18th September. *A palace on the hill: a story of many parts*. An illustrated talk by Dr Jim Lewis on the history of Alexandra Palace.



Built in 1873 to rival the Crystal Palace, it reopened in 1875 after a fire. Its attractions included the Great Hall, with organ and seating for 12,000 at concerts, as well as a monkey house and zoo in the Palm Court. Alexandra Palace was the birthplace of television in 1936. Jim will also tell all about what happened to the transmitters during the Second World War, when they were allegedly shut down.

Friday 13th October. *Medieval kremlins and monasteries on Russia's Golden Ring*, by Stephen Gilbert.

Several well-preserved historic towns, often with fortified enclosures (kremlins), to the north and east of Moscow, such as Vladimir and Suzdal, have been important in the history of Russia, particularly

between the 12th and 16th centuries, before the rise of Moscow to pre-eminence. Many of the monasteries and churches have fine stone carvings, icons and wall paintings. After neglect and desecration during the Soviet period, 1917-91, they have now been restored and re-opened for worship. (*Joint meeting with Enfield Archaeological Society.*)

Monday 20th November. *River Lea or Lee from Luton to Leyton*, by Richard Thomas.

A journey from the source of the river at Luton to Old Ford lock in London, with various digressions en route. The talk covers the history and development of the Lee Navigation with modern photographs and contrasting early 20th century postcards. That section of the river which flows through eastern Enfield and Edmonton will be covered in more detail.

TES special events. For details see the pages shown.

Saturday 9th September. *St Alban's heritage*. TES 6 to 7 mile walk. Page 10.

Saturday 23rd September, 2pm. *Visit to Enfield Court (Enfield Grammar Lower School)*. Page 12.

Wednesday 27th September. *Epping Forest stroll*. Short gentle paced TES walk. Page 10.

Wednesday 8th November. *Clubs, royalty and government*. TES discovery walk. Page 11.

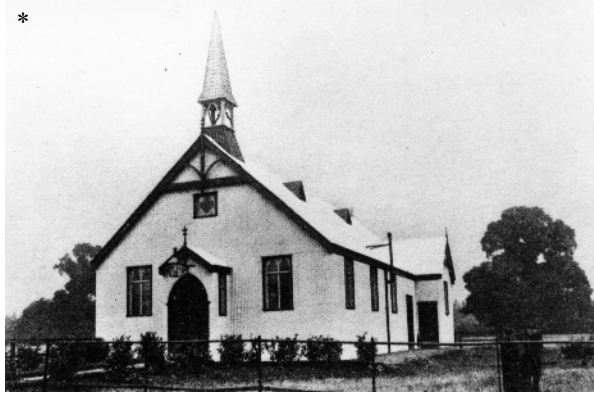
Historic buildings

St Stephen's Church, Park Avenue, Bush Hill Park

St Stephen's Church may be reached by bus 329 or W8 to the junction of Park Avenue with Village Road.

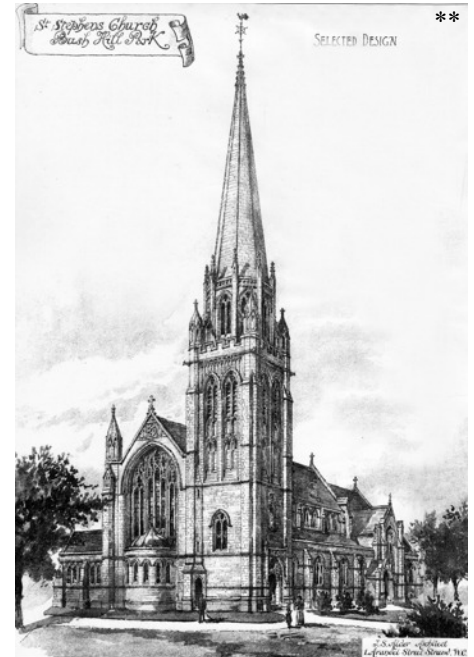
For more information see *From fields to flats. A history of Bush Hill Park and St Stephen's Church* by Denis Hoy, published in 1984 and revised in 1998. This book may be consulted at the Enfield Local Studies Centre and Archive, which also provided the image marked *. Images marked ** were provided by Richard Barnard.

Stephen Gilbert

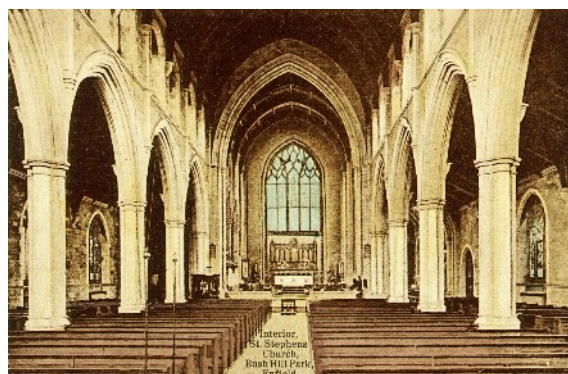
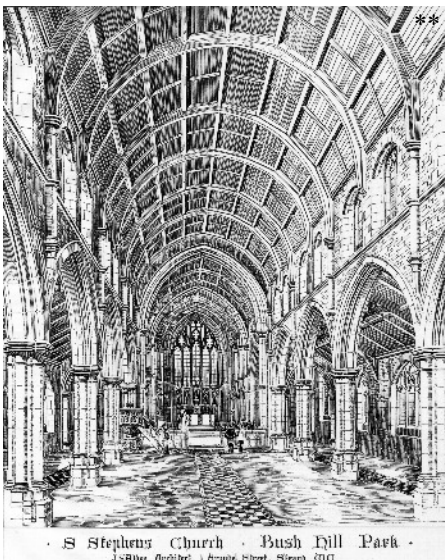


Until the late 19th century Bush Hill Park was a rural area in the parish of Edmonton, although it had been divided by a branch railway line constructed in 1849 from what is now Angel Road, Edmonton, to Enfield Town. In the 1870s the first estates west of the railway were sold for development. The first "rustic bijou villas" in Wellington Road and Village Road were completed in 1878. These were large detached houses with middle class inhabitants. Following the opening of a railway station at Bush Hill Park in 1880, further estates were developed. Around 1890 small terraced houses were built in the Avenues east of the railway. They were mainly occupied by members of the working class.

To meet the religious needs of the growing population, St Mark's Anglican (1893), Salvation Army (1902), Methodist (1905) and Congregational (now United Reformed) (1910) places of worship were built. A temporary Iron Church (St Stephen's) was opened in Park Avenue in 1901 as a chapel of ease to All Saints Parish Church, Edmonton. It was heated by a solid fuel stove, the flue for which can be seen at the side.



In 1906 work began on a permanent church to a gothic design by John S. Alder. The walls were built of Stamford stone, with Welden stone for the corners, Bath stone for the windows and pillars and York stone for the steps. The church was to be lit by electricity. The first part, comprising the chancel, morning chapel, organ bay, clergy and choir vestries and three bays of the nave and aisles, was completed in 1907 at a cost of £6,000. The consecration by the Bishop of London is illustrated in the picture postcard. In 1909 St Stephen's became a separate parish. Completion of the church, which in 1912 was estimated to cost a further £4,800, was delayed by the First World War. The nave was finished in 1916, but the tower and spire, shown in the 1904 architect's drawing, were never built. The lychgate, which also served as a war memorial, was unveiled in 1922.



The architect's drawing and picture postcard of the interior show the nave and chancel as planned and when newly completed. The organ was installed in 1908 at a cost of £1,150. The organ case was given in memory of the first vicar's father.



Historic buildings



Following the opening of the permanent church, the Iron Church was converted into the church hall in 1907. In 1925 it was demolished and replaced with the present church hall. This was built of brick with stone dressings around the windows and doors. It opened in 1926 and cost a total of £9,515.

Following improvements to public transport, with the extension of the electric tram route from Winchmore Hill to Enfield Town in 1909, the New River Estate was developed in the inter-war period. The first houses in Sittingbourne Avenue and Faversham Avenue were occupied by 1926 and Bush Hill Park was fully developed by 1935.



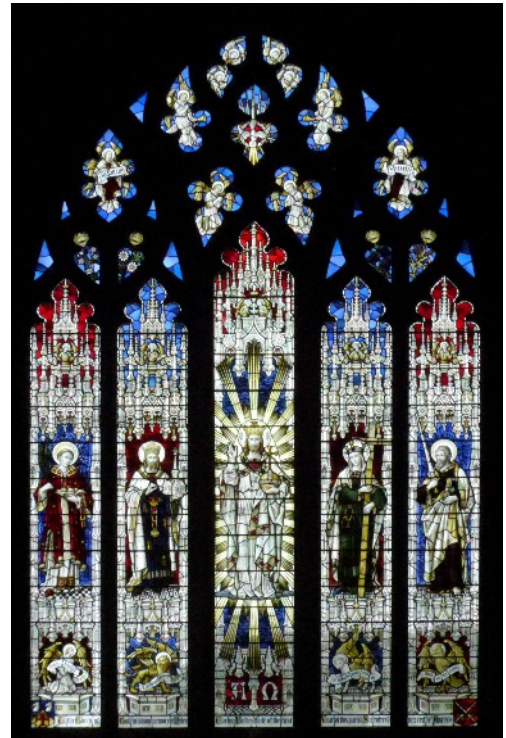
The first vicar lived in a 1901 semi-detached house in Village Road. In 1935 a new vicarage was built in Village Road, adjacent to the church, at a cost of £3,500. It had a dining room, drawing room, study, kitchen, five bedrooms, bathroom and toilet.



This 1952 window celebrates 25 years of Scouting and Guiding in St Stephen's parish. It shows a cub scout, a guide, a scout holding the Eagle patrol pennant, and a brownie, all facing Christ. In the background are Enfield Town market house and the tower of St Andrew's church. Above are scout and guide emblems while at the bottom are the words "I am among you as he that serveth".



The 1969 Youth Fellowship window shows young members of the church choir on the left with envelopes containing gifts being placed on a Christmas tree on the right. In the centre Prebendary Edward Forbes, curate and later vicar between 1901 and 1935, is shown holding a model of the church.



The east window was installed in 1946, as a memorial to the wife of the first vicar, Mrs Helen Forbes, who died in 1938. In the centre is the risen and ascended Christ with his right hand raised in the act of benediction and holding the regal symbol of an orb with a cross. Above are angels and a dove representing the Holy Spirit, while below are alpha and omega, the first and last letters of the Greek alphabet.

On the far left is St Stephen, the first Christian martyr, to whom the church is dedicated. He is shown wearing the robes of a deacon and holding a martyr's palm and a Gospel book on which are the stones used to kill him. Next is St Edward the Confessor, King of Anglo-Saxon England. He is shown wearing a crown and holding a ring and a model of a church, symbolising Westminster Abbey which he founded. On the right is St Helena, mother of the first Christian Roman Emperor, Constantine. She is holding the True Cross, which she claimed to have discovered in Jerusalem. On the far right is St Paul, holding a sword, the emblem of his martyrdom, and a book containing his letters to the early Christians. Below the saints are the four creatures recorded in Revelation, chapter 4 verse 7 – a lion, a bull, a human face and an eagle in flight, standing for the four Gospel writers.

Enfield Museum

“Terrific Toys – made and played in Enfield” exhibition in the Enfield Museum at the Dugdale Centre



The manufacture of toys and games is an important part of Enfield's industrial history and the London Borough of Enfield are celebrating this aspect of our local history in an exhibition which is running at the museum on the ground floor of the Dugdale Centre in Enfield from 7th January 2018.

One of the best known makers of games based in Enfield is Spears, who were originally a German family who moved to Enfield in the 1930s. “Scrabble” is probably their best-known product, but they made a very wide variety of games in Enfield for many years.

Matchbox Toys were made by Lesney Products founded by Leslie Smith and Rodney Smith (not related) who had been friends when they attended the Central School in Enfield before the Second World War. After the war, together with Jack Odell, they started manufacturing die-cast products in Edmonton including toy cap-guns and then branched out in 1953 into making toy vehicles that would

fit into a pack the size of a matchbox. The business outgrew the Edmonton premises and moved into a factory in Hackney Wick. Later Matchbox also made dolls and toys based on cartoon characters. In the 1980s Matchbox was in financial difficulties, but Jack Odell set up his own business making die-cast model vehicles under the “Lledo” brand in a factory in Ponders End. In recent years “Exclusive First Editions” model buses and commercial vehicles were designed and finished in Ponders End, although the main part of the production was done in China.

Lone Star die-cast products were made in Palmers Green, including the Treble-0-Lectric model trains. Originally, push-along toys they developed into a range of electrically powered range of locomotives with carriages, goods wagons, track and scenic accessories. These were to approximately the same scale as modern N gauge model railways with a track gauge of 9mm.

Southgate Circus was the original home to the “Southgate Hobbyshop” founded by Col. Beattie in the 1960s and which became the national chain of “Beatties” model shops. Many other local shops in the London Borough of Enfield also sold toys and games manufactured elsewhere, such as Dinky Toys, Corgi Toys, Triang model railways and dolls’ houses, Meccano and Hornby trains.

The exhibition in the Dugdale Centre, which opened on 13th April celebrates the rich diversity of toys and games made and played with in Enfield. One display cabinet is devoted to Matchbox vehicles, while another displays the wide variety of games made by Spears. Other showcases feature selections of toys and games from each of the decades from the 1950s to the 1990s. There are also examples of toys and publicity material from earlier years.

A central feature of the exhibition is the re-creation of a typical toy shop counter with Dinky Toys, Triang Model Railways, Airfix kits, etc in original new-looking boxes, and with various catalogues on the counter – pure nostalgia for those of us of a certain age! This display is backed by a life-size photo of the interior of Rodwins Toys and Crafts shop in Southgate – happily the lady assistant shown in the photo is still alive and well, and was at the opening ceremony of the exhibition in person.

The exhibits have largely been loaned by members of the public, including members of The Enfield Society, but Jan Metcalfe and her team at the Enfield Museum have done an excellent job of displaying a huge amount of material in the rather limited space available in the museum. Well worth a visit – and do take time to sit and watch the electronic photo display screen, which shows some fascinating material that could not be accommodated in the display cabinets. Entry to the exhibition is free and it is open Monday – Sunday 9am – 5pm.

Roger Elkin

New members

We warmly welcome the following new members:

Mr A Ali, Mr S Armstrong,
Mr B Bennett, Mrs D Chester,
Mr W Crossley, Mrs K M Halls,
Ms N Hassam, Ms J Kirby,
Mrs J M Mann, Miss K A McGeevor,
Mr M Russo, Mr W Shaw,
Ms G Smith, Mrs J Summerfield,
Mrs H J Weston, Mr P I Witriol,
Mr H Yiannakou

Joyce James

Discover Edmonton and All Saints Church, on Saturday 28th October 2017



You are invited to join with the Monumental Brass Society at their meeting looking at the history, monuments and personalities of Edmonton and All Saints Church this October. It should be a very interesting afternoon with blue guide Howard Medwell talking on “Edmonton through the ages” as well as talks on the history of the church, the monuments it contains and Charles Lamb who is buried in the churchyard. The newly restored tower will be open for those who wish to climb up. The afternoon will end with tea and cakes and is free to all, no need to book.

The church (65, Church St, Edmonton, N9 9AT) will be open from 12 midday, with the meeting starting at 2pm. I look forward to seeing you there.

Janet McQueen

A heritage walk around Clay Hill

In two previous newsletters there have been articles about the historic buildings of Clay Hill. On a sunny Saturday in May, TES members took part in a guided walk around area led by Stephen Gilbert. Clay Hill has been a settlement since at least the 13th century and has been a Conservation Area since 1983. It is an area often overlooked as people pass through on their way to Crews Hill, but you are missing a treat.

Starting at the Grade II Listed St John the Baptist Church, which dates from 1857, built in yellow brick with blue and red brick decoration and adjacent former Vicarage, the walk moved on to the cast iron Flash Lane aqueduct built to carry the New River over Cuffley Brook. There are a number of listed buildings including the Rose and Crown and the former Fallow Buck public houses and interesting individual houses. Stephen had arranged for us to visit some of the private properties and view them from the rear gardens that are not normally accessible. This included Woodbury, an Italianate style country house formerly the home of Joseph Toms (of Derry and Toms Department store), now a residential home. Talking to the owner of a particularly attractive residential property, it became clear that the Victorian and Georgian facades were added to "modernise" older properties.

We are grateful to St John's Church for opening up the Church for the visit and providing teas and coffees and to the various owners who allowed us to visit their properties and see behind the front façade.

John West

War Memorials in the London Borough of Enfield

Did you know that there are at least 116 War Memorials in Enfield?

War Memorials can be found in schools, places of worship, clubs and work places. They can range from the memorial to the Men of Edmonton, now standing on the busy roundabout at Edmonton Green; to the Lychgate at St Stephens Church, Village Road, Bush Hill Park, Enfield; a Rose bowl in Trinity Church, Church Street, Enfield; a bench commemorating the Enfield Air Raid Wardens at the junction of Pear Tree Avenue and Willow Road; wooden boards with names and a centre mosaic roundel in a wreath depicting St George and the Dragon at Southgate School, Sussex Way; an illuminated roll of honour at Ponders End Conservative Club, Derby Road, Ponders End and the Commonwealth War Graves Commission Cross of Sacrifice at

Lych gate appeal for St John the Baptist Church, Clay Hill



St John's church has launched an appeal to preserve its lych gate which is suffering from serious subsidence and needs rebuilding. The lych gate is a well known local landmark which crowns the ascent of Clay Hill. It was erected just after the First World War and funds raised for its construction included donations given to commemorate the 88 parishioners who lost their lives in that war. At the dedication service the Bishop of Willesden stated that its true significance would be 'to witness week by week the passage to and from worship of the parishioners' and it has done this for many years.

The Enfield Society has given St John's a grant of £1,500 towards the restoration and, if anyone would like to make an individual contribution, cheques can be made payable to 'The PCC of St. John and St Luke' and sent to Rev. Peter Godden at The Vicarage, 92 Browning Road, Enfield, EN2 0HG.

Anne Osborne

A lych gate is "a roofed churchyard gate to rest the bier under", from the old English word "lic", meaning "corpse".

Edmonton Cemetery on Church Street Edmonton.

The Enfield Society is working on a project with the War Memorials Trust to ensure that all the existing records of War Memorials are correct and are up to date, there are photographs of all the memorials, the names of all the individuals on the memorial are recorded and a condition survey of the memorial is undertaken.

If you are interested in helping with this project we are planning to organise training in conjunction with the War Memorials Trust and obtain grants for memorials which may need conservation. Please contact Val Munday at localistTES@enfieldsociety.org.uk or vmunday@enfieldsociety.org.uk or telephone Jubilee Hall and leave a message on 020 8363 9495.

Val Munday

Chris Jephcott, 1936-2017



We are sorry to record the death of our President, Dr Christopher J. A. Jephcott, who died on 8th June 2017 at the North London Hospice.

A full tribute was paid to Dr Jephcott in our last issue, when the Mayor of Enfield named "The Jephcott Bridge" in his honour. His contributions to Enfield and The Enfield Society were acknowledged then, but other less well known aspects of his life and work are described in the following extracts from the eulogy given at his funeral service by his son, Benedict.

"Chris was a polymath, a gifted and caring doctor, an artist, a mender, a gardener, a walker, a Catholic, a campaigner who shaped his community, who made people better and places too.

He was the active President not only of The Enfield Society but also the Bridgnorth Civic Society and Trevithick 200, where he helped turn a pipedream of a replica of the world's first passenger steam locomotive into iron and steam reality.

Stubborn yet patient and generous with time and help, over years if necessary. Reserved yet passionate. He loved gardens, architecture and the hills and the Highlands of Scotland. He had a talent to draw and paint and he used it, producing until just a few months ago.

Above all he was tolerant and he was wise. He inspired and he was loved. And he will be missed."

Future walks

Travel details are correct at press date but TES cannot be responsible for alterations. Always check for rail changes, especially at weekends (either via 03457 48 49 50 or the train company's own website). Use TfL website for tube, DLR, London Overground and TfL buses (or ring 0343 222 1234).

Groupsave discount of about 34% is available on most non-TfL trains but is not usable with any Railcards.

See TfL/National Rail publicity maps for Freedom Pass boundaries and Oyster/Travelcard zones and always bring your card(s). County Council websites display current bus timetables for non-TfL services.

Please wear walking boots or stout walking shoes and, always, either remove muddy boots or cover them with plastic bags before entering a pub or tea shop.

Tues 22 Aug. Mid-Herts. Meet 10.44 Watton-at-Stone Station (10.20 train from Enfield Chase) for about 7.5 mile circular walk in attractive countryside with a mix of woodland paths and Woodhall Estate farmland. Lunch stop in Tewin. Bring lunch or food available (pub or village shop/café). No shorter option. **Leader: Mick Spinks**

Bank Holiday Mon 28 Aug. Eastern Chilterns. Meet 10.39 Royston Station. Either by direct Cambridge train at 09.58 from Finsbury Park, or, join it at 10.17 at Stevenage by travelling on 09.21 train from Enfield Chase or 09.50 train from Potters Bar Stations. Check for engineering works. About 7.5 to 8 mile circular walk where the Chilterns merge into the East Anglian Heights with long distance views and lunch stop in the pretty village of Barley. Bring lunch or pub food probably available. No shorter option. Details: roynicholls@btinternet.com or (020) 360 0282. **Leader: Roy Nicholls**

Wed 6 Sept. Woodland Walk. Meet 10.33 Bayford Station (10.20 train from Enfield Chase). Car drivers can meet group at 10.45 near Farmer's Boy in Brickendon Green – please park considerably and NOT in pub car park.

About 7.5 mile circular walk via the varied woodland scenes of Cowheath, Broxbourne, Pembridge and Bencroft Woods. Might be muddy in places. Bring lunch or pub food probably available in Wormley West End. No shorter option. **Leader: Mick Spinks**

Sat 9 Sept. St Albans Heritage Weekend. Meet 10.30 St Albans City Station. Either by Thameslink trains at 09.54 or 10.04 from St Pancras International Station (platform B). Check for engineering works. Or by 84 bus from Potters Bar Station at 09.25 or 09.39. NOTE: car parking difficult at/near station.

6 to 7 mile circular walk via some of St Albans green spaces and visiting some of the historic properties participating in this weekend's open days event. Bring lunch or food available. Shorter option. Contact on day of walk ONLY: 07490 480 251 (no voicemail facility). **Leader: Stuart Mills**

Sat 16 Sept. Hainault Forest. Meet 10.03 Hainault Station. Either join Dave on 08.52

train from Enfield Town, or meet him at Liverpool Street station (platforms 1-3) to catch 09.34 Central Line train (arrives Hainault at 10.03). Then group will travel by 150 bus to Bocket Way for walk's start.

Using some newly opened paths, a varied 9.5 mile linear walk initially via Hainault Forest Country Park (with coffee stop) to Havering-atte-Bower for lunch stop and option to end by bus. Then with long distance views into Kent and London via Bedfords Park (Essex Wildlife Trust Visitor Centre – café/toilets) and Raphael Park to finish at Romford TfL Rail Station. Bring lunch or pub food available. Details: (020) 8366 2242 or 07948 204 025. **Leader: Dave Cockle**

Sat 23/Sun 24 Sept. Enfield Town Show.

Wed 27 Sept. Epping Forest Stroll. For tea/coffee before start, meet 10.15 onwards at Café Delice, 141 Station Road, Chingford (100 yards from train/bus stations). If not, be at bus station by 11.00. Currently, 313 buses have 21 mins frequency and about 30 mins journey time from Enfield Town.

About 2 to 2.5 mile circular walk on edge of Epping Forest with comments on landscape and geology. Please respect Norman's pace during this gentle relaxed stroll. Contact on day of walk ONLY: 07984 813 636. **Leader: Norman Coles**

Sat 30 Sept. Chilterns. Meet 10.15 Wendover Station (09.27 Chiltern Railways Aylesbury train from London Marylebone Station). Check for engineering works.

About 7.5 to 8 mile hilly circular walk in splendid scenery with long distance views on the edge of the Chilterns via Coombe Hill, Chequers Estate, Whiteleaf and Dunsmore. Lunch stop in Whiteleaf Village (bring lunch or pub food probably available) from where possibility of ending by using either nearby hourly trains or more frequent buses to Aylesbury Station. Details: (020) 8882 3602 or 07534 433 578. **Leader: Martin Langer**

Wed 4 Oct. Pymmes Brook Trail. Meet for prompt start at 10.20 at the seats beside the war memorial a few yards from the 307 bus stop in East Barnet Village (currently journey time of about 25 mins from Enfield Town).

An attractive 2 to 2.25 hour linear walk, mainly following the Pymmes Brook, via green open spaces and through Oak Hill and Arnos Parks, to end in Broomfield Park. Shorter option. Contact on day of walk ONLY: 07931 963 086. **Leader: Monica Smith**

Sat 7 Oct. North Downs in Surrey. Meet 10.20 Merstham Station. Either travel with Dave on 08.35 train from Enfield Chase, changing at Highbury & Islington for King's Cross, or meet him at St Pancras International Station (platform A) for 09.24 Thameslink Three Bridges train. Buy Off-Peak Single ticket from Coulsdon South to Merstham (return journey within Freedom Pass/Oyster coverage). Check for engineering works.

7.5 to 8 mile linear walk in attractive and wooded downland scenery that retains a remote feel despite being close to South London. Hilly in places. Lunch stop near Mugswell – bring lunch or pub food available. Afterwards, via Kingswood Golf Course and Banstead Wood to end at

Chipstead Station. Possibility of ending at Kingswood Station. Details: (020) 8366 2242 or 07948 204 025. **Leader: Dave Cockle**

Wed 11 Oct. Wickedness and Water.

Meet 10.30 at 107 bus stop at Borehamwood & Elstree Station ((09.56 Thameslink train from St Pancras International Station – platform B). Alternatively, by 307 bus to Barnet Church (34 mins journey time from Enfield Town) and then by 107 bus from Barnet Church (a further 42 mins). The group will then travel together from B & E Station by bus for 5 mins to walk's start in Elstree Village.

A varied 5.5 to 6 mile walk starting with a murder before viewing wildlife and sailing on Aldenham Reservoir and a representation of Winnie-the-Pooh's 100 Aker (sic) Wood. Bring lunch or pub food available. Shorter option. Contact on day of walk ONLY: 07946 729 053. **Leaders: Vanessa & Margaret**

Sat 14 Oct. Old Marylebone to The Roundhouse. Meet 10.15 Edgware Road Station (Circle or Hammersmith & City Lines only – NOT Bakerloo Line).

6 mile linear walk. Historic squares, lesser known side streets and fine buildings (including that housing the Wallace Collection) in the morning and, after lunch, the contrast of Regent's Park and Primrose Hill, ending at The Roundhouse, Camden Town. Shorter options. Bring lunch or food available. Details: 07904 193 098. **Leader: John West**

Thurs 19 Oct. Waterways and Olympic Park. Meet 10.30 Limehouse DLR Station – about 25 mins from Highbury & Islington Station via London Overground to Shadwell and changing onto DLR, or about 5 mins on DLR from Bank Station). About 6 mile linear walk from Limehouse Basin via waterways into the Olympic Park that will show the impressive changes and “greening” of the area since the 2012 Olympics. Possible shorter option. Bring lunch or food available. Contact on day of walk ONLY: 07506 334 019. **Leader: Peter Mackey**

Tues 24 Oct. Conservation Countryside. Meet 10.15 Bayford Station (10.00 train from Enfield Chase). Car drivers can meet group at 10.25 in Bayford Village – please park considerably and NOT in pub car park nor in residents private parking opposite pub.

About 7.5 mile circular walk in pretty countryside with lunch stop in Little Berkhamsted. Bring lunch or pub food available. Also village shop. Details: 07973 747 454. **Leader: Nigel King**

Sat 28 Oct. Westerham, Chartwell and Kent Hills. Meet at Hayes (Kent) Station to catch 246 bus at 10.42 to Westerham Green. Currently Southeastern trains to Hayes are from Charing Cross at 09.32 and 09.47 or from London Bridge at 09.40 and 09.55, arriving at Hayes at 10.14 and 10.33, but check for engineering works.

Note: travel at front of train as exit is well beyond train's stopping point and bus stop is on opposite side of road outside station, near Costa.

About 7 mile circular walk over varied terrain with great views from the wooded hills at about 700 feet above sea level near Chartwell, before returning via the lovely

Squerries Estate. Hilly in places. No shorter option.

There will be an extended lunch stop at Chartwell (National Trust) to allow time to visit the beautiful gardens and/or house. Admission free for those with N.T. membership cards but no charge for entry to picnic area, café, shop and toilets. Bring lunch or wide range of food available in café. Contact on day of walk ONLY: 07490 480 251 (no voicemail facility). **Leader: Stuart Mills**

Sat 4 Nov. South London Commons. Meet **10.30** Streatham Station (09.48 Thameslink Sutton train from platform A at St Pancras International Station but check for engineering works). Alternatively, Victoria Line to Brixton, then either bus 109, 118 or 250 from bus stop P to Streatham Station (15 to 20 mins journey time).

7 mile linear walk through a mix of open spaces and with sites of interest via Tooting Bec and Wandsworth Commons, then Wimbledon Park to end at Wimbledon Station. Shorter options. Bring lunch or food available. Details: 07904 193 098.

Leader: John West

Wed 8 Nov. Discovery Walk: Clubs, Royalty and Government. Meet **10.30** near exit into the Park at Green Park Station (Victoria, Jubilee and Piccadilly Lines). About 2.5 hour linear walk initially through the Piccadilly area with exclusive shops and historic clubs, then via St James's Palace and Park (coffee stop) and part of Whitehall to end in Trafalgar Square. Shorter options. Contact on day of walk ONLY: 07780 615 954. **Leader: Sara James**

Tues 14 Nov. Epping Forest. Meet **10.30** Chingford Bus Station. Currently 313 buses have 21 mins frequency and about 30 mins journey time from Enfield Town. About 6 mile circular walk through the late Autumn colours of the Forest via High Beach. No shorter option. Bring lunch or food available. Contact on day of walk ONLY: 07946 729 053. **Leaders: Vanessa & Margaret**

Sat 18 Nov. River Thames and Richmond Park. Meet **10.30** in entrance/ticket office foyer to Richmond Station. Either by South West Trains train from Vauxhall mainline station (frequent service and journey time of 16 to 23 mins) or by London Overground from Highbury & Islington Station (47 mins journey time). Check for engineering works.

About 7 mile walk in the Autumn scenery of Richmond Park and the River Thames. Shorter option. Bring lunch or food available. Details: 07973 747 454. **Leader: Nigel King**

Thurs 23 Nov. North Mymms Park. Meet **10.38** Brookmans Park Station on Welwyn-bound platform NOT at car park entrance (10.13 Welwyn train from Finsbury Park or at 10.35 from Potters Bar Station).

About 6 to 7 mile circular walk through varied farmland with hidden geological features, Royal Veterinary College land and North Mymms woods and parkland. Lunch stop in South Mimms Village. Bring lunch or pub food available and option to end by bus return to Potters Bar Station. **Leader: Mick Spinks**

Stuart Mills

An unexpected sight

John Bourne



Crossing the Denbies Wine Estate near Box Hill during the 24th June walk led by Nigel King in the beautiful Mole Valley, we encountered a Second World War tank. This photo shows that the tank seemed to come off worst!

The tank is a 'Covenanter', a light tank which was used by the British army in the early years of WWII. It was a poor design, lightly armed and almost obsolete by the time it was introduced in 1938, hence it is a type which saw little active service, and they were relegated to training and defensive roles such as with the Home Guard.

Prior to D-Day the area was used by Canadian troops for gunnery practice. When they left for Normandy this tank was buried, only to be rediscovered during recent excavations, and placed on display near the Denbies visitor centre. The excavations will be featured in a forthcoming History Channel programme.

Stuart Mills and Nigel King

Enfield Town shop sign



Less than 100 years ago the majority of high street shops, including those in Enfield, consisted of independent retailers. After 1945 multiple shop chains expanded and secured an insurmountable foothold to reach today's position when most urban shopping centres resemble each other and have the same limited and repetitive range of outlets.

Recently a small example of Enfield's past was revealed at No 17 Silver Street, Enfield Town, with refurbishment work exposing its sign-written and varnished shop fascia. Although no longer existing, but in common with many pre-war shops, No 17 had varnished wooden-framed windows with a recessed entrance door giving potential customers the opportunity to view stock in the deep window displays before entering the shop or whilst waiting for the 128 bus – no bus shelters in those days.

My grandfather started the business in 1921 and it continued as an independent family business until sold in the early 1970s. It became the leading china and glass retailer and wholesaler for the outer suburbs of north and north-east London and frequently had customers from further afield, including some well-known personalities.

Stuart Mills

Press & Publicity Group - volunteering opportunities

Promoting and publicising the actions and achievements of TES are vital activities that we engage in continuously. The Publicity Group has a wide range of ongoing activities, which include production of the quarterly newsletter, media and press relations, organising exhibitions and stands at local shows, daytime and evening talks, publishes a range of books, pamphlets, maps and postcards, arranges heritage walks and visits to places of interest – coach outings, co-ordinates membership administration, maintains displays on several community noticeboards. With this wide range of activities we are always pleased to welcome any offers of help and assistance.

Currently the Group is in need of further assistance with the following:

Press liaison – to engage with the local press and other media organisations, prepare press releases and content about TES

Meeting Note Taker – to attend the group meeting (approximately six to eight meetings annually) to make a brief record of the proceedings

Membership Recruitment – to deliver supplies of TES membership application forms to libraries, sports centres, theatres and other public offices throughout the Borough.

If you would like to help with any of the above or other of group activities, we would be pleased to hear from you. Please contact me either by email or call me for an introductory chat as follows: Email: press@enfieldsociety.org.uk, Tel: 020 8363 5732. I look forward to hearing from you.

Bob Fowler

Chairman: Dave Cockle

Hon. Secretary: Richard Stones

Hon. Treasurer: David James

Office: Jubilee Hall, 2 Parsonage Lane,
Enfield, EN2 0AJ

Telephone: 020 8363 9495

When there is nobody in the office, messages left on voice mail will be dealt with as promptly as possible.

Web site: www.enfieldsociety.org.uk

Helplines: For information on TES activities or to report matters you think need investigation or action, please contact the number or email address below. Other email addresses are given on the "Contacts" page on our web site.

Architecture and Planning
020 8363 7707 (John Davies)

Cleaner Neighbourhoods Group
cleanerneighbourhoods@enfieldsociety.org.uk
(Nigel King)

Coach Outings
020 8367 7374 (Janet McQueen)

Conservation Areas
020 8886 6080 (John West)

Edmonton Group
020 8367 5920 (Monica Smith)

Footpaths and Walks
020 8367 5168 (Shirley Cotton)

Green Belt
020 8366 2242 (Dave Cockle)

Historic Buildings
020 8363 0031 (Stephen Gilburt)

Jubilee Hall Bookings
020 8363 9495 (Janet McQueen)

Listed buildings
020 8363 9495 (Janet McQueen)

Membership
020 8367 3171 (Joyce James)

Press and publicity
020 8363 5732 (Bob Fowler)

Publications
publications@enfieldsociety.org.uk
(Monica Smith)

Records and Research
020 8372 0092 (Leonard Will)

Trees
020 8886 6080 (John West)

Management committee
Dave Cockle, John Davies, Tony Dey,
Robert Fowler, Stephen Gilburt,
David James, Joyce James, Nigel King,
Janet McQueen, Stuart Mills,
Val Munday, Anne Osborne, Richard
Stones, John West, Leonard Will.

Vice-Presidents
Lord Graham of Edmonton,
Mr C. Pointer, Mr M. Saunders, MBE,
Mr A. J. Skilton, Ms M. Smith, MBE

Newsletter editor
Leonard Will
newsletter@enfieldsociety.org.uk

The Enfield Society.
Registered in England as a limited company
no. 312134.

Registered Charity no. 276451.

Printed by Cambridge Printers Ltd.

ISSN 2042-1419 (Print)

ISSN 2042-1427 (Online)

Visit to Enfield Court (Enfield Grammar Lower School) on Saturday 23rd September 2017



View of Enfield Court from the north-east in 1973 after the evergreen trees and shrubs had been replaced by the school playground.

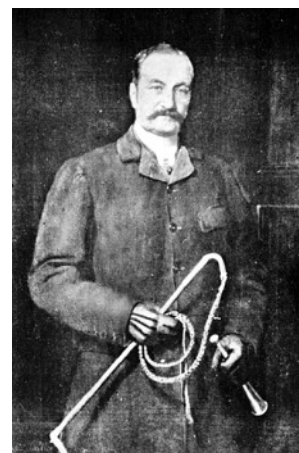
Following the oversubscribed visit to Enfield Grammar Upper School in 2015, a tour of Enfield Court has been arranged for Saturday 23rd September 2017 starting at 2 pm. Members will be able to see inside the original two-storey brick house built in 1690. Enfield Court was extended to the north and south in 1864 by Colonel, later Sir, Alfred Somerset. Colonel Somerset was descended from the Beaufort family and his crest incorporating the Beaufort portcullis can be seen in the extension together with Victorian fireplaces. It is planned that there will be a display of historic photographs. Visitors will also see the rebuilt stables with original horse mounting block, remains of the walled garden, indentations left by the former ornamental ponds and part of the original course of the new river not normally accessible to the public. The visit will also include later buildings such as the 1957 and 2015 sports halls.

Enfield Court lies at the junction of Baker Street with Parsonage Lane. It is on the W8 and W9 bus routes and car parking spaces are available in the playground. For more information on Enfield Court see the article in *TES news* no. 192, winter 2013.

To book free places, send your contact details, including your telephone number and a stamped addressed envelope to EGS Visit, Jubilee Hall, 2 Parsonage Lane, Enfield EN2 0AJ



West front of Enfield Court from the tennis court in the former walled garden, in 2008.



Colonel Sir Alfred Plantagenet Frederick Charles Somerset, C.B., J.P., D.L. (1829-1915) dressed for hunting. He was the grandson of the 5th Duke of Beaufort and nephew of Lord Raglan, the British Crimean War commander.

stating how many tickets you would like (maximum 4) or send an email message to heritagewalks@enfieldsociety.org.uk and the tickets will be sent to you by email. The tickets will indicate where the tour will start.

This tour is also open to members of Enfield Grammar School Old Boys Association. If you are not already a member of The Enfield Society you might like to complete and return a membership form with a cheque for the annual subscription of £5 per person. You can also join on our website at enfieldsociety.org.uk.

Stephen Gilburt

Newsletter contributions

Contributions to the newsletter from members are most welcome. Contributors' views may differ from those of the Management Committee, anonymous items are not published and we reserve the right to shorten or edit items before publication. Copy can be sent as an email attachment to newsletter@enfieldsociety.org.uk, but items on paper can also be accepted. Contact the Newsletter Editor, Leonard Will, at the above email address or by telephone at (020) 8372 0092 if you have any questions about making a contribution. The copy date for the next issue is 20th October, and it will be published on 14th November.

Leonard Will