

80th anniversary year 1936-2016



# Enfield Society News

No. 202, Summer 2016

## The Enfield Society – 80 years of action

This year marks the 80th anniversary of The Enfield Society, which was founded as The Enfield Preservation Society in 1936. The inaugural meeting took place at Oddfellows Hall, Old Park Avenue on 30 April 1936. In the intervening years, the Society has been involved in a wide variety of campaigns and other action, and developed the broad range of activities that we provide today.

To celebrate this important anniversary, the Society, in conjunction with the Council's Museum Service, is presenting an exhibition entitled "The Enfield Society – 80 Years of Action" which will be held in the Dugdale Centre, Enfield Town. We are fortunate that the Council have generously offered us full use of the whole of the Museum gallery together with the assistance of Jan Metcalfe, Museum Manager. The exhibition will run from 25th May 2016 until 8th January 2017. There will be a launch for invited guests on Tuesday 24th May.

The format of the exhibition is designed to tell the story of how TES came into being, tracing our major successes and achievements, explaining the work of the Society, highlighting some of the current issues we are concerned with and outlining what the future might hold. This is done through a series of display panels and cases showing related artefacts, photographs and archive materials. In addition to attracting the general public we hope that all members will take the opportunity to visit the exhibition.

Admission to the exhibition is free to all. A copy of the flyer advertising the exhibition is enclosed with this edition of *Enfield Society News*. Please share this with your friends and others who may be interested in attending. We regard the event as an excellent opportunity to showcase and promote the work of the Society

**FREE Exhibition**

**25 May 2016 to 8 January 2017**



**Enfield Museum  
Dugdale Centre  
39 London Road  
Enfield EN2 6DS**

**[www.enfield.gov.uk/museum](http://www.enfield.gov.uk/museum)  
[www.enfieldsociety.org.uk](http://www.enfieldsociety.org.uk)**



and its achievements over the eighty years of its existence. We hope this event will stimulate interest in the Society and attract a substantial number of new members from all age groups and sections of the community.

On selected dates and times during the exhibition we will have Society

volunteers attending a desk in the Museum foyer area to engage with visitors, sell Society publications and sign up new members. On page 4 you will find an invitation to become involved. If you would like to assist, Monica Smith will be pleased to hear from you.

*Bob Fowler*

# Conservation

There has been little movement on the various issues of current concern to the Society.

## Trent Park

The consultation process with Berkeley Homes is proceeding steadily, though there is still little indication of exactly what the new development would be, how large and where sited. It does appear that Snakes Lane would be the single access. From Berkeley's reports to the 'Trent Park Community Council' of interested parties, of which we are a member, and a further public consultation, there does seem to be a good appreciation of the importance of the mansion and its complex history and a welcome determination to recreate the historic landscape.

## Cycle Enfield

Here the position is as in Linda Miller's article in the last newsletter. Although the result of the A105, Enfield Town

and Southbury Road scheme consultation is now known, there has been no word regarding the next steps. The A1010 south scheme consultation closed on 20th March.

## Conservation Advisory Group

We are represented on this body. The Group objected to the most recent proposal for development on the Little Park Gardens car park, a terrace of five 3-storey houses. Two pairs of 2-storey semi detached houses, keeping the front gardens free of car parking, would better fit the grain of the surrounding area.

Work has started on a review of the Enfield Town Article 4 Direction which requires planning permission to be obtained for what would otherwise be permitted development in the Conservation Area. The aim is for a consistent set of policies for the whole area rather than the current variety affecting different sections.

## Broomfield House

Attention is still being given to the long term future of the house. In the Phase 1 public consultation last year 72% of respondents supported the idea of a community hub or a heritage, arts or cultural centre. Only 6% thought the house should be demolished. A draft Long List Options Review has been prepared by Donald Insall Associates. The list has been compiled to include various possible uses for the house and stable block. Also, the draft Conservation Management Plan has been revised to contain a list of aspirational options for improvements to the park, subject to the identification of suitable funding. In the meantime work has actually started on restoration of the double tree avenue with limes in place of the original elms and stabilising works to the stable block have been commissioned.

*Chris Jephcott*

## Charitable grants from The Enfield Society

The Enfield Society makes grants for projects which further its aims and objectives as a charity. The Society's object is the conservation and enhancement of the civic and natural environment of the London Borough Enfield and its immediate surrounding area for the public benefit.

Applications will be considered for grants of between £100 and £5,000. Details and an application form are on our website at [www.enfieldsociety.org.uk/GrantApplication.doc](http://www.enfieldsociety.org.uk/GrantApplication.doc)

The following grants have been made since 2008:

Project	Amount £	Date
<b>Civic Environment</b>		
Community notice board at Frogs Bottom	1,600	2008
Gladys Aylward memorial plaque	200	2009
Jesus Church Forty Hall – bollards to prevent vehicle access	500	2009
Myddelton House – replacement of sundial	1,000	2009
Enfield Parish Church – organ restoration	1,000	2010
St Mary Magdalene Church – restoration of wall-paintings	500	2010
All Saints Church Edmonton – restoration	1,000	2010
Enfield Museums Service – Enfield Life Exhibition, Dugdale Centre	6,000	2012
Forty Hall – education sponsorship. 6 years @ £5,000 p.a. (Continuing)	17,500	2012
Art Start, Charity School Hall – <i>The Lambs' Tale</i> puppet show and DVD	2,000	2013
Enfield Museums Service – Enfield at War school resource pack	1,970	2014/5
Broomfield Park - conservatory railings	4,483	2014/5
Christ Church United Reformed Church - repairs	500	2015
Forty Hall – transport of school groups to the Hall	626	2015
Open House London – sponsorship of Enfield's entry	4,000	2015
Two Brewers – memorial plaque and seat on site of bombed pub	2,010	2015/6
<b>Natural Environment</b>		
Jubilee Park – trees	1,000	2008
Montague Road Open Space – trees	1,000	2009
Footpath bridge – planned use on path near Spurs ground	1,500	2009
Merryhills Way – waymarking	210	2011
Florence Hayes Recreation Ground – fruit trees	1,500	2011
New River Loop – improvement of Parsonage Lane path	5,000	2014
Enfield Town Park – trees at Cecil Road entrance	10,000	2014
Chase Green – planting	2,490	2014/5

## Street trees in North Enfield

To propose an article about the trees in Lancaster Road might suggest something very short indeed! But the fewer the trees there are in a road, the greater their contribution to the townscape. The few trees on this road are both in private and public ownership and do a lot to relieve the tedium of the bricks and concrete.

Starting at the Baker Street end, there are two ornamental trees outside the parade of shops, and a pleasing array of shrubs. Over the road, the "Hop Poles" Public House has five splendid large trees around the perimeter of the car-park, all



**The Hop Poles car park**

in good shape, though two or three are heavily shrouded in ivy. The car park is not very well maintained, and if ever the site is re-developed, one must have some anxieties for the future of these trees. Maybe a preservation order would help.

The adjacent block of flats has two small ornamental trees, but the major contribution in this part of the road is



**Near Weardale Gardens**

nearer the entry to Weardale Gardens where there are four mature plane trees in public ownership and well-maintained. These are important trees in rather a dull townscape. Things get better moving further west where outside the supermarket and Fairview office block there is a substantial planting of shrubs, mostly evergreens, and including three mature trees. These were presumably planted when the offices were built and remain in private property. They are a very welcome "green" part of the road

Then there is a very long gap until we arrive at the junction with Chase Side. I note just two exceptions: first the mature trees at the ends of Kynaston and



**Armfield Road**

Armfield Roads – the latter trees nobly surviving the onslaughts of huge delivery lorries to nearby shops; and the second honourable exception are the beautifully maintained grounds of the United Reformed Church.

Brigadier House, at the junction with Brigadier Hill, is one of the finest older houses in the district. The large garden used to boast a huge chestnut tree, sadly now gone, but still there are four lime



**Lime trees at Brigadier House**

trees and numerous large shrubs, all well maintained. Then on the other side of Brigadier Hill the private house on the corner is enclosed by a large hedge and numerous mature conifers which very



**Conifers and raised bed of shrubs**

effectively protect the privacy of a rather exposed house. Clearly they were planted many years ago by a previous owner and they are a very important part of the urban landscape.

To complete the picture there is a mature sycamore on the green triangle outside the shops on the opposite corner. This is local authority property as are the raised beds at this crossroads. They were recently cleared by the council but are now being replanted.

Two further points. In the long stretch of this road without trees there is the office and large car-park of the Co-operative Funeral Services. The office building is modest, and the surroundings are bleak. Come on, Co-op, you could really improve on this dreariness by planting a



**Cooperative Funeral Service car park**

series of attractive shrubs against the boundary wall. And secondly, there is surely room for some more ornamental trees outside the flats at the top of Weardale Gardens. It really would make a difference.

So there's more to the trees of Lancaster Road than meets the eye. Crucially a large number of them are on private property. One can only hope that the owners are aware of how much pleasure these trees give, and look after them.

*David Nash*

## Trees Group

In the winter newsletter we noted that of approximately 100 tree saplings on the Society's nursery at Trentwood Side, over 30 were ready for planting out in new locations. The wet weather has meant that some trees have grown quickly and are over 3 metres high. Following discussions with Enfield Council's Arboricultural Officer, during February, over 30 trees were relocated to the Firs Farm Recreation Ground. Volunteers from the Society with staff from the Parks Service lifted the trees. The Council also provided transport to move them. The Firs Farm wetlands project is being developed by the Friends of Firs Farm on the open space between the Great Cambridge Road and Firs Lane. The project is supported by the Mayor's Green Fund and is linked to drainage improvements in the area. We are looking forward to seeing the trees thrive in their new location.

Thanks are due to all the volunteers who have worked hard to maintain the trees over the last year. With the removal of the larger trees, we will be able to bring on the new saplings including those collected from members and seeds from Kew Gardens. This will enable us to pursue our long term aim of supporting tree planting projects across the Borough. We also hope to develop a Tree Trail in one of our local parks.

*John West*

## Other organisations' events

This list gives a selection of forthcoming events arranged by organisations other than The Enfield Society. Other events and updates may be found on our web site at [www.enfieldsociety.org.uk](http://www.enfieldsociety.org.uk) and on the Enfield Council site at [www.enfield.gov.uk/events/](http://www.enfield.gov.uk/events/)

**2nd Wednesday of each month, 12.30-1.00pm, St Mary Magdalene Church, Windmill Hill Lunchtime music recital**

**First Tuesday of each month of 2016, 7 for 7.30pm, Jubilee Hall. Presenting Enfield,** by Joe Studman. A series of monthly illustrated talks on the history and heritage of The London Borough of Enfield. Each talk lasts approx 60 minutes. Cost £3.00 per person payable on the door. No need to book and no previous knowledge required. Details at [www.jaywalks.co.uk](http://www.jaywalks.co.uk) or email [joe@jaywalks.co.uk](mailto:joe@jaywalks.co.uk)

**Thursday 12th May, 7pm, Millfield Theatre. Swan Lake** - classical ballet.

**Friday 13th May, 7.45 pm, Dugdale Centre. A brief history of music.** A whistle-stop tour of Western musical history, from the Middle Ages through to the end of the 20th century in this fun and fast-moving show, featuring long forgotten songs.

**Wednesday 18th May, 7.45 for 8pm, Jubilee Hall. Wrotham Park: the development of the house by successive generations of the Byng family,** by Charles Dace. [EHHS]

**Wednesday 8th – Friday 10th June at 7.30pm and Saturday 11th June at 2.30pm, Wylyotts Theatre, Potters Bar. Carmen.** Southgate Opera presents Bizet's famous opera. Box Office 01707 645005 [www.southgateopera.co.uk](http://www.southgateopera.co.uk)

**Tuesday 14th June 2016, 7.30 pm. Visit to Salisbury House, Bury Street West, Edmonton.** Tour led by Paul Everitt. Booking details from the Historical Association Branch Secretary - see below. [HA]

**Weekend of June 18th-19th. Open Squares Weekend,** over 200 gardens across 25 London boroughs, many not usually open to the public, can be visited. Tickets £12.

**Friday 1st July, 7.45 for 8pm, Jubilee Hall. Protecting Enfield 1939-1945: industrial archaeology of WW2 in Enfield,** by Ian Jones and Neil Pinchbeck. (Joint meeting with EAS.) [EHHS]

**Wednesday 27th July, 7 for 7.30pm, Bruce Castle. Old films of the Edmonton Hundred area,** by Louise Pankhurst (London Films). (Joint meeting with Friends of Bruce Castle.) [EHHS]

**EAS:** Enfield Archaeological Society. Visitors are very welcome (£1.00 per person). [www.enfarchsoc.org/index.html](http://www.enfarchsoc.org/index.html)  
**EHHS:** Edmonton Hundred Historical Society. [www.edmontonhundred.org.uk](http://www.edmontonhundred.org.uk). Talks are free to members – there is a charge of £1 per head for visitors.

**HA:** Meeting of The Historical Association, North London Branch. Non-members are welcome (£1 per meeting). More details from the Branch Secretary, Robin Blades (020) 8368 5328, [robin.blades@virgin.net](mailto:robin.blades@virgin.net). Associate Membership available for £5 a year for an individual or £8 a year for a couple.

## Heritage walks

Do you want to know more about your local area? Every year we run a series of informative free local guided walks often with access to buildings not often open to the public. Both members and non members are very welcome.

Currently on offer are:

**Thursday 2nd June. A walk round Enfield Town,** includes visits to the Tudor Room and St Andrews Church. Meet at the Market Place, Enfield Town at 7pm.

**Sunday 31st July. A walk round Pymmes Brook and Silver Street, Edmonton** led by Joe Studman, starts 2.30pm.

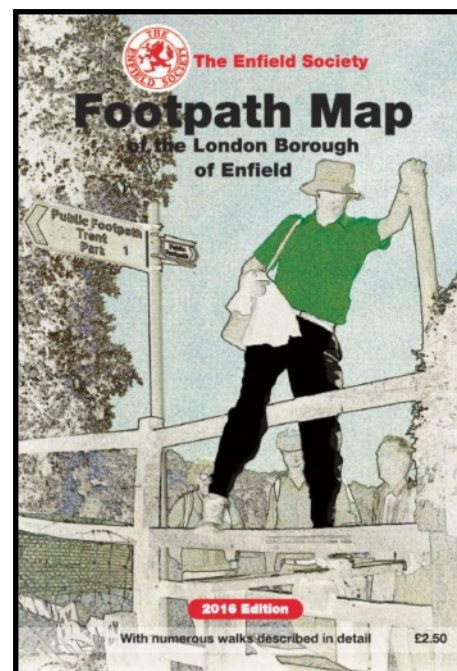
To get tickets for these free events please apply with a stamped addressed envelope to Heritage Walks, Jubilee Hall, 2 Parsonage Lane, Enfield, EN2 0AJ, or send an email to [heritagewalks@enfieldsociety.org.uk](mailto:heritagewalks@enfieldsociety.org.uk) and we will send you a ticket by email. As numbers are limited for Joe's walk there is a maximum of 4 tickets per application.

### Can you spare two hours a month to help the Enfield Society?

As you will read elsewhere there is to be an exhibition about the Society at the Dugdale Centre for about six months. This should be a great opportunity to recruit new members and to sell some of our publications. It is not possible to cover all the time the exhibition will be open but we would like to try and have a member there between 1 and 3 pm each day to answer questions, give out membership forms and sell books, maps and cards. If you could do this for two hours in the months of June and July, please contact me by e-mail ([publications@enfieldsociety.org.uk](mailto:publications@enfieldsociety.org.uk)), phone (020) 8367 5920 or mail (c/o Jubilee Hall), advising me which days of the week would be most convenient for you and any times you will be away.

Monica Smith

## Publications



### Footpath map

The 2016 version of the Enfield Footpath Map will be on sale from early May. The 2011 edition has been revised with new footpaths and other information. The price remains £2.50 and can be purchased from our Sales Table. Copies will also be on sale, in due course, from Waterstone's Bookshop, Forty Hill Farm Shop, Forty Hall and other retailers.



### The Lambs' Tale puppet show

A copy of this DVD has been sent to every local authority school in the borough of Enfield. However, as we have a few spare copies if you know of an academy or independent school that would like a copy, please send me either by e-mail ([publications@enfieldsociety.org.uk](mailto:publications@enfieldsociety.org.uk) or post (Jubilee Hall, 2 Parsonage Lane, EN2 0AJ) the name and address of the contact to whom the DVD should be sent. Copies can also be purchased from our Sales Table or by post (£3 post free).

### Sale

The remaining copies of *A Portrait of Gentleman's Row* have been reduced in price to £5 (from £9.50) and the last copy of *A centenary of Growing, the story of the horticultural industry in the Lea Valley* by Jim Lewis, to £20 (from £25).

Monica Smith

## Enfield Society events

**Tuesday mornings 10.00 for 10.30am, Jubilee Hall. No tickets required.**

**31st May. *How Help for Heroes helps injured service men and women***, by Sue Clack. Our speaker this month works with Help for Heroes to help raise awareness of the continuing need for support amongst the many young men and women who have given so much for this country. She will describe how Help for Heroes helps mentally as well as physically injured service men and women who are either adapting to life out of the armed forces or are now working in non combat roles.

**28th June. *Working towards food sovereignty in London***, by Felicia Ruperti, OrganicLea. OrganicLea, a community market garden in Waltham Forest, have recently launched their "Farm Start" project to help boost food sovereignty in London. The aim is to support the creation of grow-to-sell enterprises in London and surroundings. The first farm start site is located in Edmonton and partly funded by the Garden Enfield project. Please come along to hear more about OrganicLea, the Enfield farm start site and future plans for Enfield-based growing projects.

**26th July. *Silk painting and teaching silk painting in India***, by Rosemary Randall. This talk will describe the different types of silk and the many different techniques used in painting on silk, together with examples and a short demonstration. Rosemary will also talk about her experiences in teaching silk painting in India.

**Evening meetings, 7.30 for 8 p.m. at Jubilee Hall. No tickets required.**

**Monday 16th May. *London's railway termini, part 1: north***. An illustrated talk by Roger Elkin.

**Thursday 9th June. *AGM***, followed by ***From Forty Hill to Bulls Cross***, an illustrated talk by Frank Bayford.



Myddelton Avenue is becoming increasingly cluttered with advertising banners – there are nine in this picture, some of them advertising Council-sponsored events. The fence to which they are attached forms the boundary of the Forty Hill conservation area, so it might be argued that they are not within it, but they certainly detract from the environment.

## The Chairman's column



In the run-up to the Mayoral elections, I was glad to read of all candidates' support to London's Green Belt being given the strongest protection as there are alternatives available for home building. I wholeheartedly agree, as do 82% of the Enfield residents who responded to the recent Local Plan Consultation process, registering their disapproval concerning building on the Green Belt. The plan to build on the Green Belt fields to the south of Enfield Road has been turned down by the Mayor for London, there being no very special circumstances to justify such action. Meanwhile, I was alarmed to learn that an approach has now been made to local planners to see if the Green Belt grazing meadows on the north side of Enfield Road on the west bank of Salmons Brook (opposite the Jolly Farmers public house) can be used for building. The Society will continue to oppose such attempts to erode the Green Belt.

One Green Belt issue that looks like being resolved is the use of South Lodge Farm as an industrial site refurbishing refrigerated vans. The number of vans on site has been drastically reduced. We now await feedback from Planning Enforcement on the agreement reached for use of the farm.

Lately, I have been busy attending meetings with various other local groups. TES has been supporting The Friends of Chase Green in their aims to reach a clear understanding with the Council on the activities, which might take place on The

Green. Since this area has special protection as a "village green", commercial activities are restricted. Some interesting old maps and documents have come to light showing that The Green includes Conical Corner and Chase Green Gardens. Another meeting I attended was with London Overground, who have imaginative planting schemes proposed for Bush Hill Park, Enfield Town and Southbury Stations. They have engaged with local residents' associations and are hopeful that community volunteers will get involved with maintaining their local station gardens.



The Society is grateful to its members for reporting apparent breaches of planning legislation which seem to occur at an alarming rate. A typical example is this advertising hoarding in the Church Street Conservation Area at Edmonton Green.

*Dave Cockle*

**Special events. For details see the pages shown.**

**Thursday 2nd June, 7 pm. *Heritage walk round Enfield Town***. Page 4.

**Wednesday 8th June. *Orchid Stroll***. Short TES walk. Page 10.

**Saturday 18th to Friday 24th June, All Saints Church, Edmonton. *The Lamb Festival***. Page 11.

**Tuesday 21st June. *East End***. TES Discovery Walk. Page 10.

**Thursday 21st July. *Nautical Connections in S.E. London***. About 6 mile TES Discovery Walk. Page 10

**Sunday 31st July, 2.30 pm. *Heritage walk round Pymmes Brook and Silver Street, Edmonton***. Page 4.

**Tuesday 23rd August. *Elegant Islington***. TES Discovery Walk. Page 11.

**Sunday 4th September, 11am. *Behind the scenes at Forty Hall*** – a free guided tour around the farm, vineyard and orchard. More information will be in our next issue. For tickets (maximum 4) please send your contact details, telephone number and a stamped addressed envelope to Forty Hall Farm Visit, Jubilee Hall, 2 Parsonage Lane, Enfield, EN2 0AJ, or send an email message to [heritagewalks@enfieldsociety.org.uk](mailto:heritagewalks@enfieldsociety.org.uk) and we will send you a ticket by email.

## Dealing with water pollution

The work of Thames 21 in creating sustainable drainage systems (SuDS) is going from strength to strength with new schemes at Firs Farm Open Space, Bury Street West (near the A10) and Pymmes Park. In the autumn we are planning to have a guided walk to view the sites.



The SuDS at Lonsdale Drive, upstream of Boxers Lake, where Glenbrook Stream passes through a series of swales, did its job recently after, it is suspected, the contents of a cement mixer were flushed down a surface water drain. The water exiting the culvert into the open stream was a white colour resembling milk. The incident was reported to the Environment Agency's "Pollution Hot Line" on Freephone 0800 80 70 76. They attended in order to make site investigations on a couple of nearby building sites, but there was no conclusive evidence relating to the source of the pollution.

*Dave Cockle*

## Historic buildings

# St Luke's Church, Browning Road, Enfield

The parish of St John the Baptist, Clay Hill, was established in 1867 based at the 1857 chapel of ease belonging to St Andrew's parish church. St John's parish was divided in 1899 when St Luke's parish was created, but was re-united in 1987. For more information see *Fringe benefice. A history of the parish of St John and St Luke, Clay Hill, Enfield*, edited by John Wright, which incorporated articles by Maire Newton. Copies price £10 each may be obtained from John Wright, telephone (020) 8482 2936.

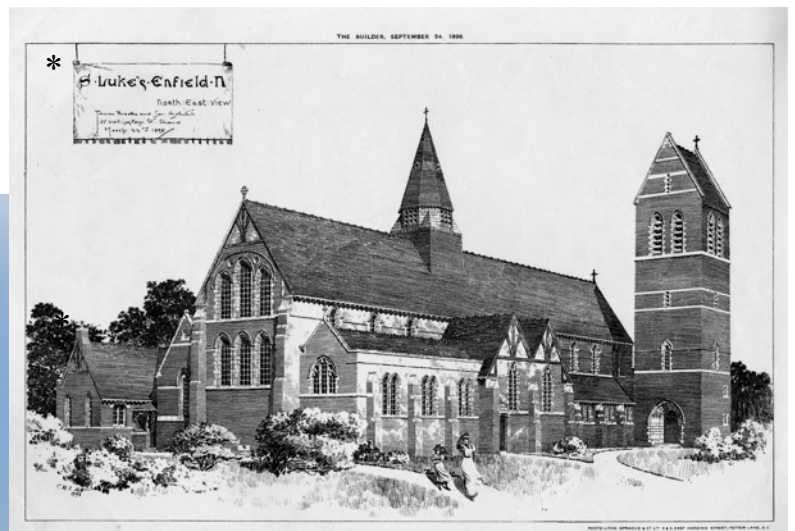
St Luke's church may be reached by buses 191 and W8 to Lancaster Road or W10 to Clay Hill and then up Browning Road. It is open from Wednesday to Saturday between 10am and 4pm, as well as for services.

Images marked \* were provided by Enfield Local Studies Centre and Archive.

Stephen Gilburt



In 1885 the former Christ Church mission in New Lane (now Lancaster Road) was sold and re-erected in Acacia Road as St Luke's Iron Church. It was refurbished with a pulpit, font, reading desk, chairs and a harmonium in 1890. An iron parish room was built next to the church in 1894. St Luke's Infants School opened in Hawthorn Grove in 1893, but closed in 1911 following the opening of Lavender Road Council School in 1910. After being used by the church and uniformed organisations the building was sold for redevelopment in 2008. In 1896 Clay Hill Parish Institute, now St Luke's Hall, was built at the junction of Morley Hill and Hawthorn Grove.



In 1895 land at the top of Browning Road, where Brigadier Hill House had stood, was acquired for a new St Luke's Church to hold 800 people. It was designed by James Brooks and Son in the Early English style. It was built of brick with stone dressings and had a bell turret on the roof. The foundation stone was laid in 1898 and the church was dedicated in 1899, although the nave was not completed until 1906. The total cost was £13,000. A planned detached tower with a saddle-back roof, as shown in the 1898 architects' drawing, was not built.

# Historic buildings



The view of the interior of the completed church looking east from the nave shows the pews facing towards the chancel and high altar. A nave altar was first used in 1966, although the present small altar dates from 2012, when the pews were rearranged to face inwards.



The vicarage in St Luke's Avenue, also by James Brooks and Son, was completed in 1901, at a cost of £3,000. It was sold in 1976 and was converted into flats. It later became a school and then a nursery.



A statue of the Virgin and Child was placed in the Lady Chapel in 1954. In 1999 the Lady Chapel and the refectory area in the former St George's Chapel were screened off with glass.



A three manual pipe organ was built in the south transept by Bishop and Son in 1906; Andrew Carnegie paid half the £600 cost. The organ was restored in 1973 and 2015.



The 1899 stained glass window of the Crucified Christ is one of six panels in the east window of the chancel designed in the studio of Nathaniel Westlake and paid for by Miss Baring of the Manor House, High Beech.



The stone panelled reredos behind the high altar was also commissioned from Nathaniel Westlake and shows the Agony in the Garden, Christ carrying the Cross (illustrated here) and the Entombment. The teak altar has carvings of the four evangelists and the Adoration of the Lamb. The reredos and altar were given by Rev. Vincent Travers Macy (vicar of St John's 1895-9 and St Luke's 1899-1906) and his wife Susanna.



The Crucifixion of Jesus is one of the 14 Stations of the Cross purchased by church members in 1949. They replaced a set installed in 1918.



The parish banner has the Lamb of God for St John the Baptist and the Ox for St Luke.

## The conservation and repair of the west end tower at All Saints Church, Edmonton

On Thursday 18th February I attended a talk by Mr Colin Kerr from Molyneux Kerr Architects to mark the completion of the work by specialists Bakers of Danbury to restore the church tower. The church was awarded a £216,500 grant from the Heritage Lottery Fund towards the £331,000 costs of the repair and The Enfield Society contributed £1,000. Work began in February 2015.



**All Saints Church**

A church has existed on the present site since at least the early 12th century. In 1136, the Lord of the Manor (Geoffrey de Mandeville) gave the church as an endowment to Walden Abbey, which he had founded in Essex. The earliest records name William the Priest in a document dating from about 1190, but the first record of a vicar was John at Green in 1335.

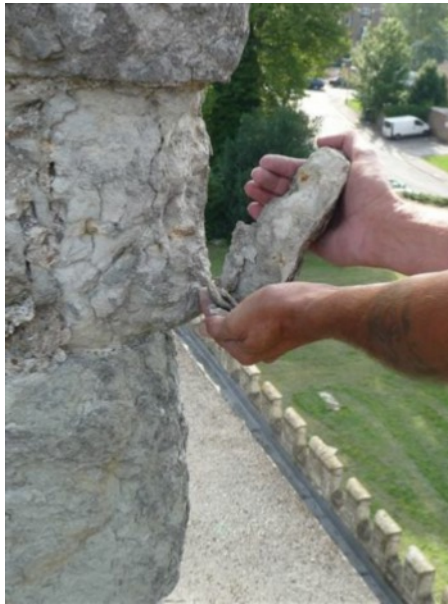
Rebuilding of the church in the late fifteenth century obliterated almost all traces of the earlier building but fragments of the Norman church can be seen in the west wall of the present church. Surviving medieval features include the chancel, the nave, the north aisle, the vestry and the tower. In 1772, controversially, the church, except for the tower, was encased in brick and galleries were erected at the west end and in the north aisle. In 1889 the south aisle was added, which led to the discovery of the 12th century arch and doorway; the galleries were removed at the same time.

The writers, Charles and Mary Lamb (authors of *Tales from Shakespeare*), are buried in the churchyard of All Saints, and there is a memorial to Charles Lamb and to the poet William Cowper inside the church.

In 2008 the Reverend Stuart Owen arrived at the church. At that time large quantities of the Kentish ragstone (a grey limestone from which the tower is built) were falling from the building. The roof was covered in asphalt and underneath the rafters had cracked through. Modern brown cement had been plastered over the stone in an attempt to make repairs but it was just exacerbating the deterioration of the ragstone. The Grade II\* listed church had been placed on the Heritage at Risk register by Historic England (previously English Heritage) in



**Decay of Kentish ragstone**



**Pieces falling off the building**



**Unsatisfactory repair with modern brown cement**

2010. To restore it satisfactorily it would be necessary to rebuild the parapet, get rid of the modern cement and cracks underneath and install a new cast lead roof on the tower. Original stones would

only be replaced where it was absolutely necessary.

All the modern cement was removed and where necessary lime mortar was used instead; shelves placed at regular intervals in the stonework, designed to divert the rain from running down the tower, were restored. A protective shelter coat of lime mortar was applied to the stones around the doorway. The wooden roof under the asphalt was in reasonable condition and the original 6 inch medieval nails were still in place. During the restoration work shells of oysters which the workmen had eaten for their lunch, and which had been used as spacers in the stonework, could still be seen.



**Oyster shell used as a spacer**

On Saturday 27th February an open day was held at the church, when an hour long Quarter Peal was rung so that the bells could be heard again after being silent for most of the past year.

The next challenge will be to raise the funds to restore the roof on the main body of the church.

*Val Munday*



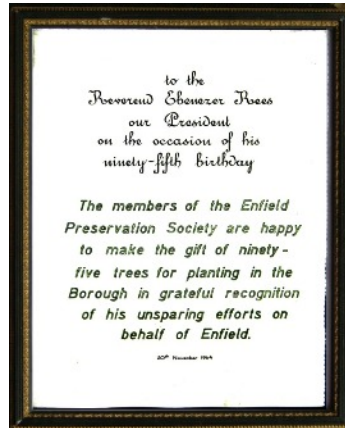
**The Vicar, Revd Stuart Owen, showing the new lead roof and restored stonework**

# People

## Rev. Ebenezer Rees

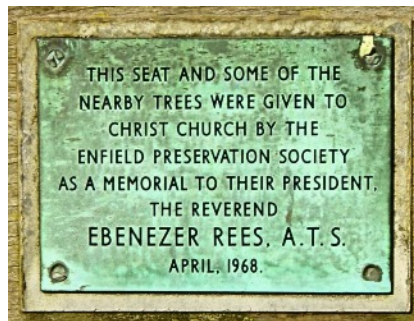


a member of the Enfield Charity Trustees. He loved music and also helped to found the Enfield Literary Union.



He was Chairman of the Enfield Preservation Society (now The Enfield Society) from 1939 to 1961 and President from 1961 to 1966. The Society gave him a framed certificate to commemorate his 95th birthday in 1964, marking the donation of 95 trees to the Borough, and in 1968 it presented a bench and trees to Christ Church in his memory.

*Stephen Gilbert*



One hundred years ago, on 13th February 1916, Rev. Ebenezer Rees came from Wales to become minister at Christ Church Congregational Church, Chase Side, Enfield. During his ministry he helped to bring local churches closer together. When he retired in 1946 he continued to preach and he was minister emeritus until his death in 1966.

He was also very active in the local community, serving as Chairman of the Governors of Enfield Grammar School, where he would give annual speeches to the boys, although these were not as long as his sermons! He was a Founder and President of the Enfield Rotary Club and

## New members

We warmly welcome the following new members

Mrs F Ardeshir, Mr & Mrs M W & P A Askew, Mr & Mrs D & M Bhalla, Mrs J Blake, Mr R Bourne, Mrs D M Burcham, Mrs M R Butcher, Mr C R Courtney, Mrs J Cowley-Smith, Mrs J C Cutts, Mr M Eccleston, Ms E M English, Mrs M A Evans, Mrs K H Godfrey, Mr J W Johnson, Mr W Johnson, Miss S E King, Mrs S A A Kingsland, Ms D S Lewis, Mr & Mrs C & V Lord, Mrs L Mayo, Mr R McInnes, Ms M Mikol, Dr & Mrs M G & K Mina, Miss C Partridge, Mrs R J Ray, Mr R M Thorogood, Mr & Mrs M & P Vella, Mr B K Ward, Ms C L Wilson

## Newsletter contributions

Contributions to the newsletter from members are most welcome. Contributors' views may differ from those of the Management Committee, anonymous items are not published and we reserve the right to shorten or edit items before publication. Copy can be sent as an email attachment to [newsletter@enfieldsociety.org.uk](mailto:newsletter@enfieldsociety.org.uk), but items on paper can also be accepted. Contact the Newsletter Editor, Leonard Will, at the above email address or by telephone at (020) 8372 0092 if you have any questions about making a contribution. The copy date for the next issue is 15th July, and it will be published on 10th August.

*Leonard Will*

## Ugly fence concealing a Grade II listed building



**75 South Street  
September 2012**



**75 South Street  
September 2015**

75 South Street, built in about 1838, is Grade II listed. According to Historic England's official record, it is "a very early Victorian house built in the Georgian tradition, largely intact and graced with elegant proportions".

In July 2013, after unsuccessful negotiations with the owner of the property, Enfield Council's Highways Department compulsorily purchased and demolished the boundary wall in order to complete a road-widening scheme, and erected a temporary wooden fence to secure the property boundary. The owner wanted the wall to be reinstated, but the Council said that this could not be done "as the wall was unacceptable in terms of its design and appearance relative to the setting of the listed building and would not receive listed building consent if applied for".

Almost three years later the dispute rumbles on and this important building, one of few in that part of the Borough, is concealed by a fence which our President describes as "an eyesore and totally inappropriate". One of our members has asked whether we can do anything to help resolve the situation, and we plan to raise the matter with the Council at the next available opportunity.

*Leonard Will*

# Future walks

Travel details correct at press date but TES cannot be responsible for alterations. As rail travel can be subject to change, especially at weekends, always check (either via 08457 48 49 50 or the operating train company website). Use TfL website for tube, DLR London Overground and TfL buses (or ring 0343 222 1234). Bring your Freedom Pass or National bus Pass. For Hertfordshire bus times see [www.intalink.org.uk](http://www.intalink.org.uk).

**Reduced price travel on most non-TfL trains:** Groupsave discount of about 34% available when 3 to 9 people travel together. Cannot be used with any Railcards.

Please wear walking boots or stout walking shoes.

**Tues 17 May. Ash Valley.** Meet 10.30 St Margaret's Station. Either 09.44 London Overground train from Southbury (with Freedom Pass valid to Cheshunt), changing at Cheshunt for 10.09 Abellio train, or by direct 09.55 Abellio train from Tottenham Hale which also stops at intermediate stations (Freedom Pass only valid to Enfield Lock). Free car park in village centre about 300 yards from station.

6.5 to 7 mile circular walk in conservation countryside south-east of Ware via Wareside Village (lunch stop and option to end by returning to Ware by bus). Bring lunch or pub food available. Contact on day of walk only: 07946 729 053. Leaders: Vanessa & Margaret

**Sat 21 May. Leith Hill revisited.** Meet Martin at Victoria mainline station for 09.31 Southern Horsham train arriving 10.32 at Holmwood Station. Freedom Pass boundary is Ewell East.

An area of beautiful countryside and long distance views. Revisiting Leith Hill and Friday Street but with an earlier shorter option after about 6 miles at Wotton (then bus into Dorking). Hilly in places. Contact: (020) 8882 3602 or 07534 433 578. Leader: Martin Langer

**Sat 28 May.** Meet 11.00 Benfleet Station. Travel by 10.13 C2C Shoeburyness train from Liverpool Street mainline station (usually from platform 18) which also connects at 10.30 with London Overground at Barking. Freedom Pass boundary is Upminster.

About 8 mile circular walk over the Hadleigh Hills with great views across the Thames Estuary. Gently undulating with one steep climb in AM and in PM downhill and then beside Benfleet Creek. Possible shorter options, including from lunch stop at Salvation Army Farm café (food available or bring lunch). Leader: Breda Jenkins.

**Sat 4 June. Bayford.** Meet 10.33 Bayford Station (10.21 train Enfield Chase). Car drivers could park considerably in either Bayford or Brickendon Villages (but not in pub car

parks) and walk down to station to meet train – allow 10 mins.

About 7.5 mile circular walk in pretty countryside via Newgate Street lunch stop. Pub food available or bring lunch. Possibility of shorter option. Details: 07973 747 454. Leader: Nigel King

**Wed 8 June. Orchid Stroll.** Meet 10.54 Cheshunt Station. Either 10.44 London Overground train from Southbury Station, or, 10.40 Abellio Cambridge train from Tottenham Hale (Freedom Pass boundaries as per 17 May walk).

After perhaps a coffee stop at the nearby YHA centre (if open), then a 2 to 2.5 mile circular walk which hopefully will coincide with orchid flowering displays. Norman will also comment on geology. Please respect Norman's pace – walk intended for those that seek a gentle relaxed stroll. Contact on day of walk only: 07984 813 636. Leader: Norman Coles

**Sat 11 June. Chess Valley.** Meet 10.47 Amersham Station. Either by Metropolitan Line from King's Cross or Baker Street (check times with TfL as trains will start from King's Cross) or by 10.12 Chiltern Railways Aylesbury train from Marylebone Station.

About 8.75 mile linear walk (3.75 in AM and with one steep climb in PM) in varied scenery with fine views, ending at Chalfont & Latimer Station. Lunch stop in Chesham (food available or bring lunch and option to end). All travel covered by Freedom Pass. Contact on day of walk only: 07490 480 251. Leader: Stuart Mills

**Thurs 16 June. Chiltern Scenes.** Meet 10.48 Hemel Hempstead Station (10.24 London Midland Milton Keynes train from Euston mainline station – Freedom Pass boundary is Harrow & Wealdstone). About 7.5 mile circular walk with good views via commons, woods, farmland, nature reserves and the Grand Union Canal. Lunch stop in Bovington Village (bring lunch or food available and option to end). Leader: Mick Spinks

**Tues 21 June. Discovery Walk: East End.** Meet 10.32 Whitechapel Station. Either by 10.19 London Overground Crystal Palace train from Highbury & Islington (usually from platforms 1 or 2) or by Hammersmith & City or District Lines.

During today's 5.25 mile walk Dolores will explore the fascinating changes created by the waves of immigration into the area over centuries. The Ashkenazi Jewish Cemetery and the Sikh Gurdwara are two of the interesting places en route. Bring lunch or food available. Many shorter options. Details: 07773 971 183. Leader: Dolores Dilley

**Sat 25 June. The Weald.** Meet Martin at London Bridge mainline station for 10.08 Uckfield Southern train (usually from platform 10) to Ashurst, arriving at 10.58.

8 mile linear walk through attractive Weald scenery, ending at Eridge Station.

Option to end at Withyham lunch stop (buses to Tunbridge Wells or East Grinstead). Bring lunch or pub food probably available, but bring emergency rations! Freedom Pass boundary is Upper Warlingham – buy return ticket to Eridge. Details: (020) 8882 3602 or 07534 433 578. Leader: Martin Langer

**Thurs 30 June. Unspoilt Herts.** Meet 10.21 St Margaret's Station to catch 10.29 351 bus to Much Hadham. Trains scheduled to arrive at St Margaret's at 09.51 and 10.21, having left Cheshunt at 09.39 and 10.09 (and from Southbury Station at 09.07 and 09.44, or from Tottenham Hale at 09.25 and 09.55). Freedom Pass boundaries as per 17 May walk. Free car park in village centre about 300 yards from station.

About 8.5 mile linear walk from pretty Much Hadham Village returning to St Margaret's through attractive countryside, woods and river valley scenery. Bring lunch or pub food probably available. Contact on day of walk only: 07490 480 251. Leader: Stuart Mills

**Sat 9 July. Windsor & Eton.** Meet 10.56 Windsor & Eton Central Station. Travel with John on 10.21 GWR Hereford train from Paddington mainline station (usually from platform 9), changing at Slough for 10.50 shuttle train to Windsor. Note: access Paddington by Circle or Hammersmith & City Lines (Bakerloo trains not stopping until late Aug 2016). Freedom Pass boundary is West Drayton.

Famous sights and interesting places during this 6 to 7 mile circular walk via Windsor, the Great Park, Thames Path and Eton College. Bring lunch or food available. Details: 07904 193 098. Leader: John West

**Sat 16 July. Dollis Valley.** Meet 14.30 Totteridge & Whetstone Station (Northern Line – also buses including 34 and 251 from Arnos Grove Station and 125 from Winchmore Hill). About 2.5 hour circular walk via Dollis Brook, Lover's Walk and Totteridge Green. Shorter options. Details: roynicholls@btinternet.com or (020) 8360 0282. Leader: Roy Nicholls

**Thurs 21 July. Discovery Walk: Nautical Connections (Part 2).** Meet 10.55 Canada Water Station. Either by 10.34 London Overground Crystal Palace train from Highbury & Islington Station (usually platforms 1 or 2) or by Jubilee Line. About 6 mile linear walk finding more of London's sea-faring history and recent changes, ending at Greenwich. Bring lunch or food available. Contact on day of walk only: 07506 334 019. Leader: Peter Mackey

**Tues 26 July. Knebworth House Country Park.** Meet 10.25 Stevenage Station (ticket hall). By Great Northern trains: either 09.45 Letchworth train from Enfield Chase, or 09.51 Peterborough train from Potters Bar, or 09.58 Cambridge train from Finsbury Park.

About 7.5 mile circular walk centred on the 250 acre parkland surrounding 500

year old Knebworth House – rolling hills, ancient tree avenues and herds of Red and Sika deer. Lunch stop at Knebworth House café or bring food. Note: free entry for RHS members to Sir Edwin Lutyens/Gertrude Jekyll designed garden. *Leader: Mick Spinks*

**Sat 30 July. London Loop.** Meet **10.30** Petts Wood Station. Either travel with Dave on **09.05** train from Enfield Chase, changing at Highbury & Islington onto Victoria Line, or meet him at Victoria mainline station for **09.55** Southeastern Orpington train (usually from platforms 1-4).

About 8 mile linear walk via woods, Scadbury Park and through Foots Cray Meadows beside a pretty section of the River Cray, ending at Bexley Station. Shorter options. Bring lunch or food available. *All travel covered by Freedom Pass.* Details: (020) 8366 2242 or 07948 204 025. *Leader: Dave Cockle*

**Wed 10 Aug. Exploring the Roding Valley.** Meet **10.45** Manor Park Station (10.20 TfL Rail Shenfield train from Liverpool Street mainline station).

7 mile linear walk through historic Wanstead Park and via the Roding Valley Path. Lunch stop and option to end in Ilford town centre – food available or bring lunch. Afternoon route is via recently restored Valentines Park and Mansion with the option of visiting the gardens and/or enjoying a tea break before ending at nearby Gants Hill Station (Central Line). *All travel within Freedom Pass area.* Details: 07904 193 098. *Leader: John West*

**Mon 15 Aug. Border Country.** Today's walk will start at **10.35** from Woldens car park in Crews Hill (opposite the station). For those wanting tea/coffee prior to the start, catch **10.00** train from Enfield Chase. If not, then **10.20** train which arrives at 10.25 and walk across to Woldens to meet the group.

About 6.5 mile linear walk on the edge of Enfield and Hertfordshire with option of ending from near Cuffley and also from the lunch stop in Northaw Village. Bring

lunch or pub food available. Afternoon section ends in Potters Bar for return to Enfield by bus. Contact on day of walk only: 07946 729 053. *Leaders: Vanessa & Margaret*

**Sat 20 Aug. London Loop – Finale.**

Meet **10.30** Bexley Station. Either travel with Dave on **09.05** train from Enfield Chase into Moorgate, changing onto Northern Line for London Bridge, or meet him at London Bridge mainline station for **10.01** Southeastern Gravesend train (usually from platform 1 but check for possible engineering works).

About 8.75 mile linear walk following the River Cray to The Thames to conclude Dave's 150 mile journey at Erith Station. On the way the route passes the magnificent Tudor Hall Place mansion and gardens (visited by TES July 2015) before reaching the Crayford Marshes and River Darent. Shorter options. Bring lunch or food available. *All travel covered by Freedom Pass.* Details: (020) 8366 2242 or 07948 204 025. *Leader: Dave Cockle*

**Tues 23 Aug. Discovery Walk: Elegant Islington squares and New River.** Meet **10.30** main concourse at Highbury & Islington Station. About 2.75 to 3 hour circular walk via recently transformed streets and squares, thereby reinstating their original elegance and character, plus landscaped sections of the New River. Coffee break at The Angel. Shorter options. Contact on day of walk only: 07931 963 086. *Leader: Monica Smith*

**Sat 27 Aug. Alban Way.** Meet **10.25** St Albans City Station (**10.04** Thameslink Bedford train from St Pancras International – platform 8). *Freedom Pass boundary is Elstree & Borehamwood.*

About 8.5 to 9 mile circular walk via Smallford with a mix of field paths and a disused railway. Shorter option with return to start by bus. Bring lunch or food available. *Leader: Breda Jenkins*

**Wed 31 Aug. Tewin.** Details in next newsletter. *Leader: Roy Nicholls*

*Stuart Mills*

## The Lamb Festival 2016

The Lamb Festival 2016 will be held from Saturday 18th to Friday 24th June, and once again we've got a rich and varied programme of events to enjoy.

I'm delighted to announce that we'll be welcoming back the young performers from Iconic Arts, jewellery making with Zinfinity, a guided walk with Joe Studman, the Carers UK poetry evening, and music from the Tottenham Community Choir, and Jacquelyn Hynes and J. Eoin. As in previous years we will be holding a Service of Thanksgiving for Charles and Mary Lamb on the Sunday afternoon, and the Festival will be launching with a Fair on the Saturday afternoon.

Last year our new MP, Kate Osamor, attended the prize-giving. This year she will be giving the second Mary Lamb

Lecture, 'On Needlework 2016', and we very much look forward to hearing what she has to say. Also, as in previous years, we will be holding Photography and Essay competitions as part of the Festival.

You can find up to date information on the Festival via our Facebook and Twitter pages:

<https://www.facebook.com/lambfestival>  
<https://twitter.com/TheLambFestival>

We're grateful for the wonderful support we receive from Partnerships in Care, Aylward Academy, The Charles Lamb Society, All Saints Church and many other partners in the local community. I hope you'll be joining us at some point over the week, to share in our celebration of the lives and legacies of Charles and Mary Lamb.

*Revd Stuart Owen  
Vicar, All Saints, Edmonton.*

## Recent walks

### Small miracle – lost and found

I would like to share this small miracle in retrieving my wrist watch which has little monetary value but is very precious and of great sentimental value for me. I lost my wrist watch last week while walking from 'The Owl' pub in Lippetts Hill, Epping Forest, to Chingford.

I would like to thank a well loved fellow walker who shares many of his photos with lots of us. Thanks to his kind action and with the help of his excellent top of the range GPS I was reunited with my watch, for which I am most grateful.

After my watch was found from the narrow busy lane, he didn't let me even buy him a cup of coffee to show my appreciation. However, I hope to express my heartfelt thanks to him here.

I also would like to take this opportunity to thank all the walk leaders for their dedication and hard work as without their help, lots of us would never have any chance to enjoy our beautiful countryside.

From here, I salute you.

*Yen Mok Bush*

## Trent Park

In the spring newsletter we reported on the initial public consultation meeting held by Berkeley Homes and a meeting between the Society and the developer where we set out the Society's key aims in any development proposals. During February, Berkeley Homes held a second public consultation meeting. Progress to date, involves proposals to demolish the poor quality, badly located post war buildings; work to restore and improve the setting of the House; confirmation of continued public access (it will not be a gated community); very welcome proposals to restore the grounds and restore the long distance heritage views across the estate and outline proposals for residential development to the south and east of the site.

The consultants appointed to advise on heritage issues have carried out extensive research on the history of the house and landscaping and we note that they were responsible for the Bentley Priory development in Stanmore where the Fighter Command Museum has been established. The next stage involves traffic surveys, development of a Transport Strategy with mitigation measures, an environmental impact assessment and testing design options. A further public consultation exercise is planned for May 2016 and it is still intended that a planning application will be submitted in the autumn.

*John West*

*President:* Dr C.J.A. Jephcott

*Chairman:* Dave Cockle

*Hon. Secretary:* Richard Stones

*Hon. Treasurer:* David James

*Office:* Jubilee Hall, 2 Parsonage Lane,  
Enfield, EN2 0AJ

*Telephone:* 020 8363 9495

*When there is nobody in the office, messages left on voice mail will be dealt with as promptly as possible.*

*Web site:* www.enfieldsociety.org.uk

*Helplines:* For information on TES activities or to report matters you think need investigation or action, please contact the number or email address below. Other email addresses are given on the "Contacts" page on our web site.

*Architecture and Planning*  
020 8363 7707 (John Davies)

*Coach Outings*  
020 8367 7374 (Janet McQueen)

*Conservation Areas, Listed Buildings, Green Belt*

020 8245 2758 (Chris Jephcott)

*Edmonton Group*  
020 8367 5920 (Monica Smith)

*Footpaths and Walks*  
020 8367 5168 (Shirley Cotton)

*Historic Buildings*  
020 8363 0031 (Stephen Gilburt)

*Jubilee Hall Bookings*  
020 8363 9495 (Janet McQueen)

*Locally listed buildings project*  
LocalListTES@enfieldsociety.org.uk

*Membership*  
020 8367 3171 (Joyce James)

*Press and publicity*  
020 8363 5732 (Bob Fowler)

*Publications*  
publications@enfieldsociety.org.uk  
(Monica Smith)

*Records and Research*  
020 8372 0092 (Leonard Will)

*Trees*  
020 8245 2758 (Chris Jephcott)

*Volunteers coordinator*  
M.Wilkie@enfieldsociety.org.uk (Moirá Wilkie)

*Management committee*  
Dave Cockle, John Davies, Tony Dey, Robert Fowler, Stephen Gilburt, David James, Joyce James, Colin Pointer, Janet McQueen, Stuart Mills, Val Munday, Richard Stones, John West, Moira Wilkie, Leonard Will.

*Vice-Presidents*  
Lord Graham of Edmonton,  
Mr C. Pointer, Mr M. Saunders, MBE,  
Mr A. J. Skilton, Ms M. Smith, MBE

*Newsletter editor*  
Leonard Will  
newsletter@enfieldsociety.org.uk  
The Enfield Society.  
Registered in England as a limited company no. 312134.  
Registered Charity no. 276451.  
Printed by Cambridge Printers Ltd.  
ISSN 2042-1419 (Print)  
ISSN 2042-1427 (Online)

## Coach trip to Mottisfont and Stonehenge Saturday 25th June 2016

Simon Newman

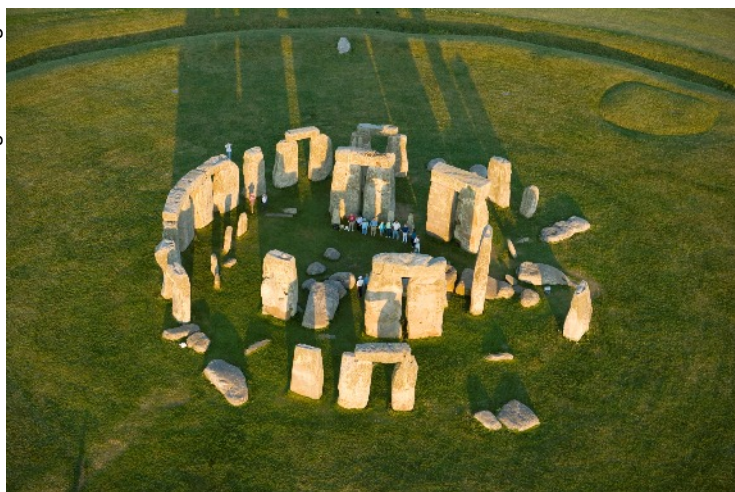


**Mottisfont**

Our coach trip this year will be very special with visits to the National Trust property of Mottisfont just as the roses should be at their best and then on to Stonehenge with its new visitor centre and road train to take you to the stones.

We will leave Enfield at 8.30 am and arrive first at Mottisfont, an eighteenth century home built around a medieval priory. There is plenty to see in the house including rooms decorated by Rex Whistler and a new exhibition of works by Beatrix Potter in the gallery. The gardens should be at their best in June – particularly the walled garden with the national collection of old-fashioned roses – but there is much else to see with river and wetland walks too. We will have time for coffee and lunch here before leaving about 1.45 for Stonehenge.

© English Heritage



**Stonehenge**

At the ancient monument the new layout means there is much to see and do besides visiting the stones, including looking round the reconstructed Neolithic houses, seeing the exhibition, and interactive film, and walking round the ancient approach to the stones (owned by the National Trust). You can hire an audio guide from the

visitor centre, or if you have a smartphone, preferably with headphones, you can download one free in advance, from the appropriate site for Apple<sup>1</sup> or Android<sup>2</sup> devices. There will be time to have tea here before we leave, aiming to arrive back in Enfield about 7 pm.

**Cost:** £20 for National Trust members, £31 for English Heritage or Art fund members and £40 for those who belong to none of these. (It is less for NT members as entry to both Stonehenge and Mottisfont are included in your membership).

Please send your name and a telephone number to "Coach Trips, Jubilee Hall, 2 Parsonage Lane Enfield EN2 0AJ" and remember to enclose a cheque, payable to the Enfield Society, and a stamped addressed envelope.

*Janet McQueen*

1. <https://itunes.apple.com/us/app/stonehenge-audio-tour/id771690237?mt=8>

2. [https://play.google.com/store/apps/details?id=com.antenna.stonehengeinhouse&hl=en\\_GB](https://play.google.com/store/apps/details?id=com.antenna.stonehengeinhouse&hl=en_GB)