



The newsletter of The Enfield Society

Continued concern over Green Belt footpaths

The Enfield Society has protested to the Council about the withdrawal of support both from Groundforce, who go out on Wednesdays, and the Enfield Conservation Volunteers who meet on Sundays. Sadly, Christina Lee, who as a Ranger and Outreach Officer has done much to keep the footpaths open and to create new ones for 22 years, is leaving Enfield shortly because of a job relocation. The Council are planning to replace her but it is clear there will be no time allocated in the duties of the new appointee for the volunteers. Plans are being discussed but the Enfield Society remains convinced that no funds will be allocated by the Council from April 2011 for contractors to undertake the necessary work to maintain the footpaths, as is their statutory duty, woods and open spaces in the Green Belt.

Monica Smith

Photographs by courtesy of Shirley Cotton



Fir and Pond Woods: unloading posts



Removing invasive rhododendrons



Fir and Pond Woods: putting in a gate



The Groundforce team at Forty Hall

How things change: Extract from Enfield Council's website, 16th June 2010:

Groundforce celebrate 500th task

Enfield's very own green fingered volunteers 'Groundforce Countryside Conservation Volunteers' had their 20th anniversary this year, having been formed in May 1990 by the Green Belt Ranger.

Their first task back then was fencing a meadow in Fir and Pond Woods Nature Reserve, to introduce Shetland ponies to graze. Since then the merry band of volunteers have been kept constantly busy with such varied activities such as hedgelaying to fencing, pond clearance to rhododendron "bashing", amongst other tasks.

The dedicated band of volunteers venture out rain or shine, on alternate Wednesdays to enjoy a bit of physical activity, carrying out practical conservation tasks in the parks and open spaces in Enfield and the Green Belt, co-ordinated and led by Enfield Council's Parks Outreach Team.

Groundforce celebrated their 500th task on Wednesday 9th June, by carrying out some footpath maintenance on a permissive path from Trent Country Park to Ferny Hill, followed by a celebratory lunch.

Past volunteers joined the current group, along with some of the recipients of their

hard work. Deputy Mayor Christiana During gave a short speech, thanking the volunteers for the role they played in looking after the parks and open spaces of Enfield, including the Council-owned farms, whose tenants had been invited to the celebration.

David Gompertz Warden at Fir & Pond Woods where the first task took place said: "I want to thank Groundforce for the great work you have done at Fir and Pond Woods Nature reserve over the last 20 years. I would also like to thank them on behalf of Herts & Middlesex Wildlife Trust, and for those who use and love Fir & Pond and certainly myself.

As I was walking around today, I was checking off Groundforce projects one by one. Starting with the front gate, then the kissing gates, then the meadow you fenced 20 years ago. More recently you fenced the meadow extension, built a new overflow dam, cleared bulrushes - and I have not forgotten the rhododendrons. I always look forward to having Groundforce on site... we owe you a lot."

Cllr Chris Bond, Cabinet Member Environment Street Scene & Parks said "The work that Groundforce have done over the years is very highly regarded by many local groups who have benefitted from it.



Bridge building at Forty Hall Farm



Planting Potters Wood in memory of EPS President, Donald Potter

Thanks to these dedicated volunteers venturing out in all weathers to cut back overgrown vegetation, repair broken fencing and plant much needed greenery, Enfield is a much more pleasant place to live. I look forward to their next 500 tasks!"

http://www.enfield.gov.uk/news/article/167/groundforce_celebrate_500th_task

Edmonton



The Enfield Society has contributed £1000 to the restoration appeal for All Saints Church, Edmonton. Dating in parts from 1134 this is believed to be the oldest building in the Borough of Enfield still in use. It has recently been placed on the At Risk register because of the urgent need for repairs especially to the tower and roof. The estimate for the tower alone is £235,423.

In writing to thank the Society, the Vicar, the Revd. Stuart Owen, extended a welcome to all our members to visit the church in Church Street, Edmonton. Donations from individual members would also be welcome and should be sent to Revd. Stuart Owen, All Saints Vicarage, All Saints Close, Edmonton N9 9AT.

Monica Smith

Edmonton Heritage Trail



In our issue 179, Autumn 2010, we illustrated several plaques from the Edmonton Heritage Trail, and regretted that the accompanying leaflet was out of print. We are glad to report that copies of the leaflet have now been found by the Borough Libraries, and may be obtained from libraries in Edmonton, from the Local Studies Library and Archives in Thomas Hardy House, and from Jubilee Hall, where they may be collected by members attending meetings. The leaflet gives a brief account of Edmonton's history and has a map and notes on the 15 points of interest on the trail.

Leonard Will

Heritage walk

Visit to Stoke Newington

A visit has been planned to Stoke Newington on Saturday 14th May starting at 1.30pm. Mick Coe will be the guide for this walking tour which is on level ground and will last about three hours. The Administrator for the Parish has agreed that the mediaeval and Victorian churches dedicated to St. Mary will be open for us, subject to weddings etc.

The tour will start at the café in Clissold Park. Bus route 141 runs along Green Lanes, past Manor House station and the park, and route 393 passes Stoke Newington station and along Church Street past the park. In addition to the churches, it is hoped to show the former course of the New River, the variety of buildings in the area which reflect its changes and to include a brief visit to Abney Park cemetery.

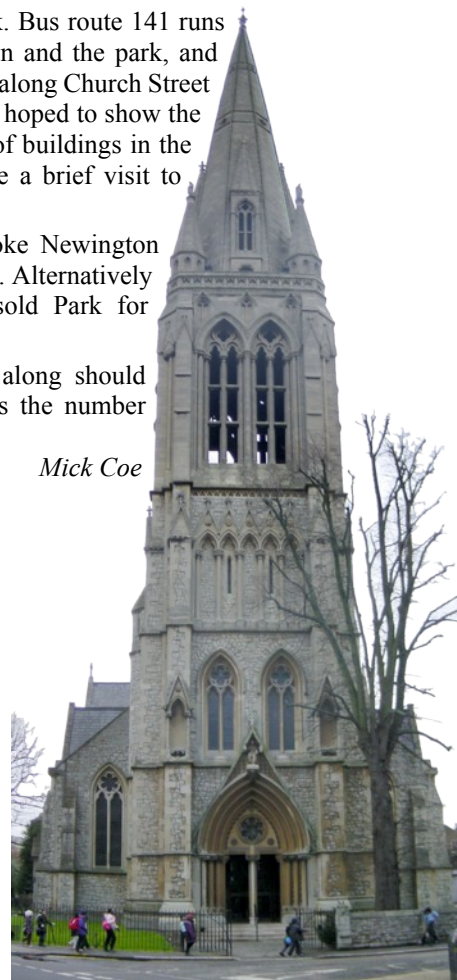
The main cemetery entrance is opposite Stoke Newington station from where trains run to Enfield Town. Alternatively participants can retrace their steps to Clissold Park for refreshments.

Enfield Society members wishing to come along should contact Mick promptly on 01707 875662, as the number participating on this tour is limited to 20.

Mick Coe



Old St. Mary's church



New St. Mary's church

Publicity Group

TES Publicity: We continue to keep a number of 'Community Notice Boards' updated with some pages from the TES News and a poster advertising the benefits of membership. We also have a regular monthly article in the Enfield Echo and less frequently in the Enfield Advertiser.

Spare copies of the TES News continue to be available from the Information Area at the Central Library and the Dugdale Centre where our Membership application forms are also displayed. In addition, The Dugdale Centre has a display of TES publications for sale.

Publications: The new TES Footpath map is now finalized and should be published in early Spring. As previously mentioned the map now includes footpaths in the whole of the London Borough of Enfield.

New Members Party: An evening for new members was held on Wednesday 17 November at Jubilee Hall and attracted over 40 members from those who have joined TES since March 2009. The evening included a welcome address from our Chairman – Janet McQueen and concluded with a screening of the New River video.

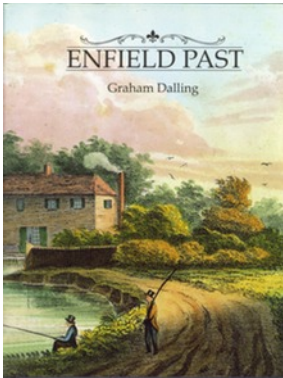
Civic Societies Meeting: The meeting with representatives of similar 'Civic Societies' in areas adjoining the London Borough of Enfield mentioned in TES 180 has been arranged to take place on 1 March at Jubilee Hall. The aim is to discuss and share ideas and experiences on issues of common interest.

Activities: The Publicity Group is in the process of planning the Heritage Walks programme and Coach outings for 2011. More information will appear in TES 182.

Bob Fowler

Sales table

We have sold out of the copies of *The Story of Enfield Chase* by David Pam, mentioned in our last newsletter, but *Enfield Past* by Graham Dalling is still available (£10 special price to members).



We have recently obtained a few copies of *Enfield's Architectural Heritage* which was published in 1977 and soon sold out. It was later partly replaced by *Treasures of Enfield* (£13.50).

Conservation

The ice rink on the Library Green, already approved by the time our last News appeared, has come and gone and is reported to have been a success. The grass does not appear to have suffered too badly. But if there is any thought of repeating it, then let it be a proper sized rink on the Town Park where the music and the day and night growling generator will cause less disturbance.

We have still to come to terms with the Coalition Government's relaxations of the planning system, but an earlier change is causing problems. All planning applications involving alterations or extensions to a dwelling house are termed Householder Applications. For the past twenty months there has been a streamlined appeal service in cases where permission has been refused. No further comments can be made by objectors once an appeal has been lodged. This means that our routine comments on planning applications now have to be more detailed and thorough to take account of a possible appeal. The problem is made worse by the fact that recently we are finding quite significant applications, such as for side wings to Grade II listed Garnault at Bulls Cross, contain insufficient detail to enable a constructive and accurate comment. We contend that Enfield Council should not be accepting such inadequate applications for consideration.

Chris Jephcott



"Enfield's Architectural Heritage" was edited by Valerie Carter, Peter Perryman and Alan Skilton as a permanent record of an outstandingly successful exhibition "Looking at Buildings" in which more than 200 photographs of existing buildings were used to illustrate the development of English architecture over four centuries. 100 of these photographs are reproduced in this book which can be purchased for £5 from the Sales Table at meetings, including the AGM. If ordering by post please add £1 per volume towards the cost of postage to your cheque.

We have also obtained some copies of Whitaker's *History of Enfield*, originally published in 1911 and reprinted by the Enfield Preservation Society in 1969. It is well described by its title page, which

reads "An illustrated historical, statistical and topographical account of the Urban District of Enfield by Cuthbert Wilfrid Whitaker, M.A., Captain, 3rd Battalion, The King's (Liverpool Regiment). With maps of the district, and over 100 illustrations from engravings, original sketches and photographs." Two of the illustrations are shown below.



This substantial hard-bound book of 400 pages is a bargain at our price of £5, though as it is quite heavy postage and packing will cost £3 if it is to be sent by post.



Full details of these and other books we have for sale are given on our web site.

Monica Smith

Trees Group

The recent freezing conditions and indisposition have combined to prevent any Trees Group activity during the last quarter.

However, as we go to press, we are faced with the devastation arising from Network Rail's wholesale clearance of the trees along the embankment between Green Dragon Lane and Grange Park, up to 100 metres from the tracks and not sparing huge oaks. It seems the works are to do with embankment stabilisation but we will make urgent inquiries to see why such a drastic solution was thought necessary.

Chris Jephcott



Lineside felling at Green Dragon Lane overbridge



Felled massive oak

Lost treasures

Art Start is an organisation based in Edmonton which provides after school activities for children. Over the past 13 years it has also grown into Enfield's primary community arts provider, working in schools and the community and taking part in festivals and events locally and nationally. In 2009 The Enfield Society was glad to support Art Start's application for funding from the Heritage Lottery Fund. The bid was successful and the resulting artwork can now be seen throughout the Borough of Enfield. The aim was to recreate some of the buildings, now lost, which had been music halls, cinemas or other places of entertainment. Five primary and one secondary school took part in the project which used the medium of mosaics.

The eight buildings chosen because of their striking architecture or as the location of significant events were:

- The Alcazar Cinema opened in 1913, as part of an entertainment complex. The mosaic is in Morse Way, Edmonton
- The Bycullah Athenaeum, Windmill Hill, a popular venue for many types of entertainment until 1931 when it burnt down.
- The Coronation Cinema, an electric picture palace which opened in 1911 in High Road, Arnos Grove.
- The Edmonton Theatre, which lasted only 20 years from 1805 as it did not find favour with local worthies. The mosaic is in Grove Street, Tottenham.
- The Empire Music Hall, built in 1908 and the venue for the last appearance of Marie Lloyd who appears on the mosaic at Edmonton Green. It became a cinema in 1933 and was demolished in 1970.
- The Premier built in 1921 was the first cinema for residents of Eastern Enfield and continued to show films until 1961. The mosaic is in Eastfield Road.
- Queen's Hall (Florida). The first purpose-built cinema in the area in 1911 closed in 1976. Later known as The Town House and used as a nightclub until it was demolished in 2005.
- The Regal Edmonton, a mammoth cinema with seating for 3000, opened in 1934 and closed in 1974. The mosaic is outside Lidl's, Sterling Way, Edmonton.

Some of these striking mosaics are shown in the photographs.

Monica Smith



The Bycullah Athenaeum, Windmill Hill.

The mosaic was on the south side of the Civic Centre, some distance from the site, because nobody would offer nearer wall space for it. However, thanks to some successful campaigning by TES member Dave Cockle, it will soon have a new home courtesy of Network Rail and train company First Capital Connect. This will be at Enfield Chase Station, almost opposite the original site. The Society has also offered to pay for a correction to one date on the accompanying plaque.

The Premier Cinema, Enfield Wash

The entrance, with pictures of stars of the day, and two staff in their distinctive red uniforms.



The Coronation Cinema, Arnos Grove

A representation of the original facade.

The Regal Cinema, Edmonton.

A depiction of the souvenir programme for the opening performance on March 8th, 1934.



Historic buildings

Millfield House, Silver Street, Edmonton, N18 1PJ

This late 18th century Grade II* listed two-storey house with cellars will be among the buildings illustrated at a joint meeting of the Edmonton Hundred Historical Society and the Edmonton Group of The Enfield Society, entitled *Discovering historic buildings in Edmonton, Winchmore Hill and Southgate*, at the Charity School Hall, Church Street, Edmonton, at 7.30 for 8pm on Friday 25th February.

Early residents of Millfield House included the Imperial ambassador, Daniel Barbot Beale, a local landowner, and Robert Mushet, a Royal Mint metallurgist. The Strand Board of Guardians opened a children's establishment in Millfield House in 1849 and a workhouse was later built alongside; both closed in 1913. During the First World War Belgian refugees were briefly housed there. The buildings were adapted to form St. David's Hospital for epileptics in 1917 and an air raid shelter was constructed in the grounds in the Second World War. The hospital closed in 1971 and the former workhouse was demolished. Since 1979 the house has been part of the Millfield Arts Centre, which now includes a theatre built in 1988.

Although currently closed for renovation until later this year, the house can usually be visited on the Open House London weekend in September. Buses 34, 102, 144 and W6 pass the entrance and the nearest railway station is Silver Street.



Millfield House was built by 1796 of stock brick with a stone canopied parapet. The south wing has dormer windows in a later mansard roof.



Either side of the entrance is an early 19th century cast iron verandah with a swept roof.



The curved, stuccoed entrance porch has Doric columns and a frieze flanked by round headed niches.



Iron framed fanlight over the central door



The oval stairwell has an impressive curved, cantilevered staircase, naturally lit through a glass dome. Doors and architraves are also curved to fit the shape of the wall.



Behind Millfield House can be seen the former workhouse which was demolished after St. David's Hospital closed in 1971.

(Image provided by Enfield Local Studies Library and Archive)



Plaster ceiling rose in the oval entrance lobby



Decorative Frieze above the door of the large ground floor room



The large ground floor room has a neoclassical frieze of urns and husk garlands and a fine carved marble fireplace.

Diary dates

This list gives a selection of forthcoming events. Other events and updates may be found on our web site at <www.enfieldsociety.org.uk> and on the Enfield Council site at <www.enfield.gov.uk/events/>

Until 20th March 2011

A passion for painting patterns: an exhibition of the textile designs of Raymond Honeyman, at the Museum of Domestic Design and Architecture, Cat Hill. Open Tuesday to Saturday 10 am to 5 pm, Sunday 2 to 5 pm. Admission free.

Sunday 20th February, 10 am - 4 pm

ECV Task: Trent Country Park. Meet at the staff yard, near Animal Corner Swiss Lodge café. We have a choice of continuing the work in the Nature Trail, or some pond and rhododendron clearance. [Note 4]

Sunday 20th February, 10 am

Guided walk: Pymmes Brook Trail.

Meet at 10 am outside Pymmes Park Visitor Centre. Approximately 7.5 miles, finishing around 3 pm. [Note 3]

Friday 25th February, 7.30 for 8 pm

Discovering historic buildings in Edmonton, Winchmore Hill and Southgate: a slide show by Stephen Gilburt. (Joint meeting with Edmonton Hundred Historical Society at Charity School Hall, Church Street, Edmonton.)

Sunday 6th March, 10 am - 4 pm

ECV Task: Whitewebbs Park. Meet at the lay-by at Mile and a Quarter North footpath entrance, Whitewebbs Lane/Road. ECV have been cutting back the encroaching scrub to improve the sunny bank for wildflowers, including cowslips. The work continues. [Note 4]

Tuesday 8th March, 8 pm

Simon de Montfort: the first leader of a political movement in English history, Professor David Carpenter, King's College, London. [Note 1]

Wednesday 16th March, 7.45 for 8 pm

A history of Northaw Place, by Brian Warren, and EHHS AGM, at Jubilee Hall [Note 2]

Sunday 20th March, 10 am

Guided walk: Albany Park to Chingford (London Loop, section 18). Meet at 10 am at Albany Swimming Pool Car Park. Approximately 4 miles, finishing around 2 pm. [Note 3]

Sunday, 20th March, 10 am- 4 pm

ECV Task: Trent Country Park. Meet at the Main Entrance, Cockfosters Road. Froglife have secured funding to improve the pond and create two new ones to improve the habitat for amphibians. ECV will be helping with whatever needs doing! [Note 4]

Sunday, 3rd April, 10 am - 4 pm

ECV Task: Oakwood Park. Meet at the pavilion, entrances on Prince George Avenue and Lakenheath, opposite Saxon Way. ECV will continue work on the rediscovered acid grassland, carrying out scrub clearance. [Note 4]

Tuesday 12th April 2011, 8 pm

The origins of the American Civil War and its complications, Professor Brian Holden Reid, King's College, London. [Note 1]

Thursday 14th April, 7.30 for 8 pm

Norfolk Churches, by Graham Dalling, with slides. (TES Historic Buildings Group).

Sunday, 17th April, 10 am - 4 pm

ECV Task: Forty Hall. Meet at Forty Hall car park, off Forty Hill. ECV will be carrying out some more subtle thinning of the invading oak onto the Great Field, as part of the management of the important acid grassland and historic landscape. [Note 4]

Wednesday 20th April, 7.45 for 8 pm

The story of Trent Park, by Keith Hammond, at Jubilee Hall [Note 2]

Saturday 7th May, 10 am to 1 pm

The Winchmore Hill Friends Meeting House (Church Hill, N21) will be open, giving a chance to visit Enfield's oldest nonconformist place of worship. For further information, contact Graham Dalling, (020) 8355 3075.

Wednesday 18th May, 7.45 for 8.00 pm

King James Bible and its importance, by Peter Brown and Mike Edge, at St. Andrew's Church [Note 2]

Thursday 9th June 7.30 pm

The Enfield Society AGM at Jubilee Hall, followed by an illustrated talk on *Royal residences in England* by Stephen Gilburt.

[Note 1] Meeting of The Historical Association, North London Branch, at Jubilee Hall. These meetings are open to all and there is no fee. More details from the Branch Secretary, Robin Blades (020 8368 5328), <robin.blades@virgin.net>.

[Note 2] Meeting of the Edmonton Hundred Historical Society. Talks are free to members, and there is a charge of £1 per head for visitors. For details see <<http://edmontonhundred.freeukisp.co.uk/>>

[Note 3] An Enfield Council guided walk, organised by The Parks Outreach Team. Details are in their leaflet and may be on the Council's Web site at <https://www.enfield.gov.uk/downloads/file/2022/guided_walks_programme>, though this had not been updated for 2011 at the time of going to press. Telephone (020) 8441 8272 or email <alan.mitellas@enfield.gov.uk> for more information if necessary.

[Note 4] Meeting of the Enfield Conservation Volunteers. For more information see <<http://www.ecv.org.uk/>> or telephone (020) 8449 2459.

Letter to the editor:

Do other members share my concerns over the following issues?

1. **Lamppost clutter!** Many lampposts around the borough were installed over a year ago and are still not lit, side by side with all the old lampposts (have a look at Lancaster Rd for example), plus new modern style lampposts right next to new 'Edwardian style' lampposts (take a look outside the Hollybush Pub for a great example of this).

2. **Trees disappearing.** Trees being felled around Enfield Town Park, Cecil Rd (right by precinct exit) and Old Park Ridings, to name but a few. Will they be replaced?

3. **Wheelie bins.** The introduction of wheelie bins – will this mean the sight of three huge bins lined up in the front gardens of every terraced house around Enfield!? What happened to caring for our visual environment too! It would make sense for terraced houses to keep the small recycling bins that they already possess, which provide enough capacity for small households, plus are small enough to be hidden behind garden walls.

It would be interesting for readers to know The Enfield Society's opinion on these three matters, and is there anything you can do to help please? I'm sure residents would be very grateful, as many are very concerned but may not have the time to voice their concerns.

Kind regards, Julie Hinckley

Newsletter contributions

Contributions to the newsletter from members are most welcome, and may be in the form of letters, articles, news items, responses to previous articles, opinion pieces or photographs. We cannot undertake to publish everything, and we reserve the right to shorten or edit items before publication. Copy in electronic form is most convenient, and can be sent as an email attachment to <newsletter@enfieldsociety.org.uk>, but items on paper can also be accepted. Contact the Newsletter Editor, Leonard Will, at the above email address or by telephone at (020) 8372 0092 if you have any questions about making a contribution. The copy date for the next issue is 15th April 2011, but items can be sent at any time and having them in advance is most helpful. The newsletter is distributed about three weeks after the copy date.

Leonard Will

Jubilee Hall meetings

Tuesday mornings 10.00 for 10.30 am.
Some meetings may finish a little later than normal.

22nd February

Around the world in 23 years, by Linda Scoles, with slides.

29th March

Warships to the Olympics – a history of the lower River Lea Valley, by Peter Lawrence, with slides.

26th April

The history of the Intimate Theatre, by Geoff Bowden, with slides.

31st May

London parks and gardens, by Tim Kidd, with slides.

Thursday evenings 7.30 for 8.00 pm

17th February

An entertainer and actor's journey, by Dave Newby, with slides and amusing stories.

17th March

Carolyn Grace – a lady and her spitfire, by Maggie Radcliffe, with slides.

14th April

Norfolk Churches, by Graham Dalling, with slides. (Historic Buildings Group).

21st April

Joyce Grenfell, by Malka Baker

19th May

Animal magic, by Maggie Radcliffe, with slides.

June

TES AGM, no meeting

July

no meeting

August

no meeting

Jubilee Hall

We now have a new caretaker for the Hall and consequently are able to take on some more bookings. If you run a local group, would like to hire the hall for a meeting or would like more information regarding hire rates, conditions of hire, etc., then please contact Pat Keeble on 020 8360 3873. Unfortunately we are not able to accept bookings for social events and the hall is not suitable for children's activities.

Janet McQueen

The Chairman's column



At the last management committee, while discussing the content of this newsletter, Leonard Will requested an article to feature on the front page. At the time of writing I don't know what this is, but it seems to me that there are several topics of concern that could be discussed. The most worrying at present is the future of Groundforce and the Enfield Conservation Volunteers. The Council say that Parks have never had the budget and have used other money and Property Services who used to hold it can no longer identify it. Consequently the very small amount of money needed to run the groups is to disappear and quite likely with it thousands of hours of free labour which over many years have kept Enfield's country parks and public footpaths well maintained and clear of debris. We have asked the Council on several occasions to review their position and have now taken the step of writing to our MPs and the press.

Another area of activity is the museum, or more accurately the small exhibition space at Thomas Hardy House. There has been a recent consultation about the possibility of expanding this into a proper museum and we have written to Doug Taylor the Leader of the Council offering our full backing and support for this idea, and offered a considerable sum in matched funding if a Heritage Lottery Fund bid goes ahead and is successful. Let's hope it will; a town the size of Enfield with its long and varied history, and royal connections deserves a functioning museum.

A further item is the Heritage Lottery Fund bid and plan for the grounds of

Forty Hall. As you will know Forty Hall itself is now closed and undergoing a refurbishment programme to return it to more like the internal structure it would have had in the eighteenth century. There is also a bid to change the grounds back to a similar period, with a viewing platform near the lake. It seems likely at present that this may go ahead, but the changes to the grounds may not be popular with everybody.

The threat to the Green Belt to the south of Enfield Road however has gone quiet at present. Having attended various meetings, written several letters, and promoted our view and that of the local residents society as often as we can, the current position is that Fairview still have an obligation to seek planning consent for any development. As the Council's view is that Enfield has no need of more sites for building, no further activity seems to be happening. One cannot but feel that this could change and we will continue to watch the situation very carefully.

So, trying to keep all these projects under review, in the public eye and on the Council's agenda are some of our main occupations at present. Do let us know what your views are on these and any other topics. We do try to represent our members' views and interests and are keen to keep in touch with your opinions and thoughts. You can contact any of us at the email addresses given on our website or write to Jubilee Hall.

Janet McQueen

St Mary Magdalene

The Enfield Society has made a donation of £500 towards the appeal for funds to restore the Victorian wall paintings in this church, featured on page 7 of the Autumn 2010 *TES news*, no. 179. Further donations are welcome and can be sent to the Vicar, The Reverend Gordon Giles, St. Mary Magdalene's Vicarage, 30 The Ridgeway, Enfield EN2 8QH.

Historic Buildings Group

Following Stephen Gilbert's talk on Medieval English Cathedrals on 6th January, the next Historic Buildings Group meeting will be held in Jubilee Hall at 8pm on Thursday 14th April. All members of The Enfield Society are invited to an illustrated talk by Graham Dalling on Norfolk Churches.

Annual General Meeting

The 2011 AGM will be held on Thursday June 9th at Jubilee Hall. It will start at 7.30pm and will be followed by an illustrated talk on "Royal residences in England" by Stephen Gilbert. All members are encouraged to attend.

Any Society member is entitled to propose candidates for election to the Management Committee at the AGM. Any proposal must be signed by the candidate and by at least ten members supporting the proposal and must be received by the Honorary Secretary, Richard Stones, at Jubilee Hall not later than 1st May 2010.

Janet McQueen

Footpath walks

Walk leaders needed please!

The Enfield Society's programme of walks cannot function without members offering their services to lead walks etc.

For many years we have been very fortunate in having a substantial number of leaders who have provided an extremely varied choice of events for all Society members. These walks are also open to non-members who, hopefully, will then be encouraged to join The Enfield Society – new members are vital in keeping the Society alive.

Unfortunately, during the last two years **nine** leaders have felt they are unable to continue for a variety of reasons, including the one that inevitably will affect everybody, namely *anno domini*. Some of these leaders had led for well over 20 years. The Society is, of course, most grateful to all leaders for their time, diligence and assistance – without them, a programme would have been impossible and Society members would have missed many enjoyable days out. Obvious casualties of these changes are our coach walks which, regrettably, no longer seem possible.

Although I am pleased to report we have been fortunate to have some new leaders coming forward during recent months, Enfield Society must look to the future. We hope some of you who regularly attend walks will offer to lead walks or, perhaps, arrange a visit to an interesting part of London or nearby (always popular). A walk does not have to be complicated or far away from Enfield. For instance, it could be taken from walk guide books, or it could be your favourite local walk – perhaps in Forty Hall grounds or in Whitewebbs, Hillyfields, Trent Park or in other local parks etc.

Please come forward and speak to one of the current leaders or myself – if it would help, no doubt one of the existing or past leaders could give some assistance.

However, without extra leaders, the programme will continue to shrink.

Stuart Mills

It is with regret the Society has learned of the deaths of two longstanding members – Marie Pearce and Kay Hollands. Until recent years both were regular and well-known participants in Society walks, also attending meetings and other activities.

Photos: John R Bourne



Chislehurst, 23rd August



Docklands, 27th November



Chilterns, 3rd May



Little Hallingbury Mill, Gaston Green
30th August



Watton at Stone, 30th October



Lunch stop at the Pied Bull, 5th June



Near Crews Hill, 5th June

Future walks

Train details are correct at press date but we cannot accept responsibility for last minute changes.

Enquiries: for operating train companies' enquiries and times ring 08457 48 49 50; for TFL London area Tube, DLR, London Overground and bus details, ring (020) 7222 1234.

Reduced price train travel: Groupsave Off-Peak Day Return (previously Cheap Day Return) tickets allow 3 or 4 adults to travel together for the price of 2 adults on First Capital Connect, London Midland, Southeastern, Southern, Chiltern, South West or National Express East Anglia. Even for travel to the start of linear walks Groupsave tickets are usually cheaper than buying a standard price single but you must travel as a group.

Please bring your Freedom Pass / National Bus Pass with you as we might use a bus for access.

Please wear walking boots or stout walking shoes – trainers are not usually suitable, even for London parks.

Wed 23 Feb. Bloomsbury. Meet **10.15am** at entrance to Platforms 9 & 10, Kings Cross mainline station. A linear walk linking some of the many squares and gardens in Bloomsbury. Full route ends by about 1.15pm near Leicester Square Station. Many shorter options. *Leader: Monica Smith*

Sat 26 Feb. Dulwich. Meet **11.00am** Sydenham Hill Station (10.40am Orpington train from Victoria – earlier trains are every 15 mins). Alternatively, travel with Margaret & Toby on the 9.29am train from Enfield Chase or meet them at 10.00am at entrance to Platforms 9 & 10, Kings Cross mainline station. Today's 6 mile circular walk is through historic Dulwich Village via commons and woods, finishing mid-afternoon with option to visit the famous Dulwich Picture Gallery. Shorter options. Bring lunch or food available. All travel within Freedom Pass area. Details: 07703 470 156. *Leaders: Toby Simon & Margaret McAlpine*

Mon 7 March. Capital Ring. Meet **11.00am** Wimbledon Park Station (District Line from Earls Court/Central London or from Wimbledon mainline station). *Note: Dave will travel on 9.34am train from Enfield Chase.* Today's max 7.5 mile linear walk ends at Richmond Station and covers the most rural section of the Capital Ring, crossing Wimbledon Common & Richmond Park. Shorter options. Bring lunch or food available. All travel within Freedom Pass area. Details: (020) 8366 2242 or 07948 204 025. *Leader: Dave Cockle*

Wed 16 March. Border Country. Meet **10.26am** Crews Hill Station (10.21am train from Enfield Chase) for 6.5 mile linear walk via Burnt Farm Ride, the edge of Cuffley, Northaw (lunch stop) and Fir & Pond Woods, ending at New Cottage Farm on The Ridgeway for return to Enfield by 313 bus. Shorter options of 3.0 & 4.25 miles. Bring lunch or pub food available. Details: (020) 8360 0282. *Leader: Roy Nicholls*

Sat 26 March. Conservation Countryside. Meet **2.32pm** Bayford Station (2.19pm train from Enfield Chase) or 2.40pm in Bayford Village for car drivers but please park considerately. About 3 hour circular walk through a mix of pretty fields and woods. *Leader: Brian Frear*

Wed 6 April. Barnet Countryside. Meet **10.15am** at Arkley Hotel, Barnet, the terminus of the 307 bus route. A 2.5 to 3.0 hour linear walk via Saffron Green & Hadley Common, ending in Barnet. *Leader: Monica Smith*

Sat 16 April. Chilterns. Meet **10.32am** Amersham Station (9.57am Chiltern Railways train from London Marylebone Station or 9.41am Metropolitan Line train from Baker Street) for about 7 mile circular walk in delightful scenery. Via Misbourne Valley & Shardeloes Lakes, pretty Little Missenden village (lunch stop) and bluebell woods. Bring lunch or pub food available. All travel covered by Freedom Pass. By car about 1 hour via M25 (junction 18) & A404. Details: (020) 8366 2242 or 07948 204 025. *Leader: Dave Cockle*

Wed 20 April. Epping Forest. Meet **10.30am** Chingford Bus Station (next to rail station) at 313 terminus. 313 buses from Church Street, Enfield Town, currently at 9.40am & 10.00am. Springtime in the Forest with a 6 to 7 mile circular walk via High Beach. Bring lunch or food available. *Leader: Norman Coles*

Bank Holiday Mon 25 April. Upper Lea Valley. Meet **10.30am** in public car park (not in pub car park) at rear of The Bull PH, High Street, Wheathampstead Village (near river bridge). About 8 mile circular walk in pretty countryside with the River Lea & bluebell woods. Bring lunch or pub food probably available. By car via A1 M (junction 4), then B653. *Leader: Stuart Mills*

Sat 30 April. Mid-Hertfordshire. Meet **10.15am** Watton-at-Stone Station (9.49am train from Enfield Chase, scheduled to arrive at 10.13am) for a contrasting figure-of-eight walk in this unspoilt area, in one direction via Aston Bury and the other via Datchworth. Option to end or join at Watton lunch stop. If joining, meet group

in village by 1.30pm (not at the station) with train from Enfield Chase at 12.49pm. Bring lunch or food available. Details: (020) 8360 0282. *Leader: Roy Nicholls*

Bank Holiday Mon 2 May. No walk.

Wed 4 May. London's Countryside. Meet **10.55am** Hayes (Kent) Station (10.25am train from London Bridge mainline station – usually from platforms 1-3). Alternatively, travel with Martin on the 9.34am train from Enfield Chase, changing at Moorgate for the Northern Line to London Bridge. Max 8.5 mile linear walk based upon the London Loop through attractive and varied scenery with woods, farmland, heaths and long distance views. Several shorter options, including two main possible departure points after 4 and 6 miles. Bring lunch or food available. All travel within Freedom Pass area. *Leader: Martin Langer*

Sat 14 May. River Ivel & River Hiz Valleys. Meet **10.30am** Arlesey Station (9.41 am Peterborough train from Finsbury Park or at 9.51am from Potters Bar Station) for 8 mile circular walk through farm/parkland and the valleys of these two rivers. Possibility of ending at lunchtime. Bring lunch or pub food probably available. Don't forget to plan for price reductions with purchase of Groupsave rail tickets. By car AIM (junction 10), then follow A507 westwards for about 3 miles (signposted Henlow, Ampthill & M1. Station is next to A507 on the bypass to Arlesey Village. Details: 07703 470 156. *Leaders: Toby Simon & Margaret McAlpine*

Wed 18 May. Hertsmere. Meet **10.36am** at The White Hart PH, South Mimms (10.29am 84 bus from Potters Bar Station) for about 7 to 8 mile walk through pretty countryside via Shenley with some interesting history. Possibility of ending at lunch. Bring lunch or food available. As the walking route may be either circular or linear according to the day, please bring your Freedom Pass/National bus pass in case we should return to start by bus. *Leader: Stuart Mills*

Sat 28 May. Essex Villages. Meet **10.30am** Harlow Town Station (10.10am Cambridge train from Tottenham Hale or at 10.18am from Cheshunt Station. From Southbury Station catch 9.44am train to Cheshunt). Please check train times earlier in the week. About 8.5 mile circular walk via Hunsdon, Roydon & River Stort valley. Possible shorter option by bus. Bring lunch or food available. By car via A10, A414 and Harlow Town Station is on the left as you enter edge of Harlow. *Leader: Brian Frear*

Bank Holiday Mon 30 May. No walk. *Stuart Mills*



Power to the people? The Localism Bill



For those of us who are not sure exactly how the “Big Society” is supposed to work, the Localism Bill, currently being debated in Parliament, now gives some pointers. A clear aim of the Bill is to promote “democracy” over “bureaucracy”, by the use of local referenda and by devolving power from local authorities to grass-roots community bodies. More specifically:

- A petition from five per cent of the voters of a local authority area will be able to demand a referendum about anything within the local authority’s powers. The result will not be binding on the authority, but may be a useful (if expensive) way of putting pressure on the authority on, for example, an environmental issue.
- “Neighbourhoods” will be able to devise development plans for their areas, and to propose “development orders” granting planning consent for specific developments. These will be reviewed by an independent examiner (along the lines of the existing process for local authority development plans) and will become binding on the local planning authority if approved by a majority of the votes cast in a referendum in the area concerned.

It seems to be expected that neighbourhoods will generally correspond with parish boundaries, but it will be open to any locality to promote itself as a “neighbourhood”, with the

local planning authority acting as referee to avoid overlaps. If there is a parish council, this will have the new “neighbourhood” powers, but in areas (like Enfield) where there are no parish councils other bodies such as residents’ associations can apply to become a “neighbourhood forum” which will fulfil this role. There will be only one neighbourhood forum in a neighbourhood, but other community organisations will be able to use the same machinery to obtain planning permission for specific developments under what are called “Community Right to Build Orders”

- People with neighbourhood connections will be able to nominate particular land or buildings to be listed by the local authority as being “land of community value”. Once listed, the land cannot be disposed of unless community interest groups are given the opportunity to bid for it. This will help communities to have a say in the use of, for example, open spaces or disused public buildings: but the provision as it stands is largely window-dressing as there is nothing to stop the owner from selling the property to another bidder even if a community interest group wants to buy it.

Like most modern laws the Bill is only a framework and a lot of the detail is “to follow”. So at this stage it is not easy to see exactly how the new “localism” will work. It sounds a good idea to put truly local issues in local hands. But:

• Unless the planning process is drastically simplified it will surely be difficult for most neighbourhood forums to deploy the time and skills required to frame their own plans or development orders. The local planning authority will be required to provide practical assistance, and the Government will have the power to provide funding, but it remains to be seen whether this will provide adequate support.

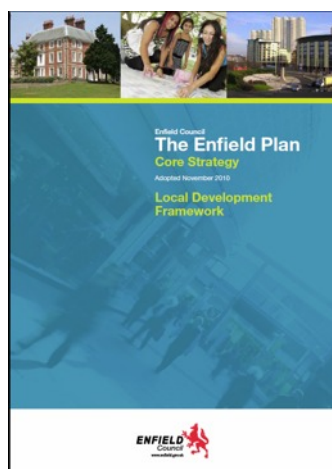
- Devolving the initiative to the neighbourhood level may create its own problems: what happens if a neighbourhood wants to approve developments in the green belt, or to demolish a listed building? And how will the local authority reconcile a patchwork of potentially contradictory neighbourhood plans?

• Paradoxically the whole structure seems likely to place a lot of additional burden on local authorities at a time when their budgets are being severely squeezed. And if the local authority wants to raise council tax to fund all this, another provision of the Bill will allow local electors to block the increase!

Nonetheless, if the proposals are enacted in anything like their current form, they are likely to have a significant effect on the environment in which we, and others who care about civic amenity, operate in the future.

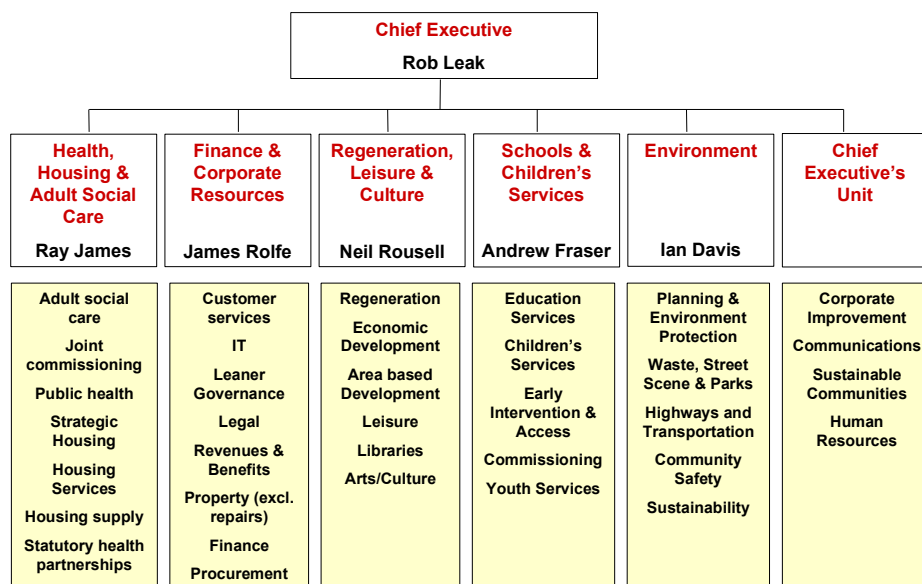
Richard Stones

The Enfield Plan



The Enfield Plan: core strategy, discussed on page 1 of our last issue, has now been published and can be downloaded from http://www.enfield.gov.uk/download/3329/the_enfield_plan-core_strategy_adopted_november_2010

The structure of Enfield Council from January 2011 after its recent reorganisation



Palmers Green Triangle: calm, proportion and warm red bricks

In the early autumn of 2010 the fate of the iconic horse-chestnut on the Palmers Green Triangle was sealed. Old, confined in hostile conditions, riddled with disease, unsafe, it had to go. I was shattered – this was the death of an old, old friend.

It therefore came as a surprise as I breasted the railway bridge which overlooks the Triangle shortly after the deed was done that I liked the space more than before. I liked the proportions, I liked the warm red and attractive architecture of the Victorian brickwork; the potential was obvious.

In fact, a campaigning group called Improving Our Place based around Palmers Green had already proposed that this 'Triangle be squared' creating a town square which capitalizes on its position, its proportions, and the strong, warm architecture to cement its place at the heart of the local community. Trees would certainly be part of such a scheme, but the choice of location and species would depend on the interpretation of the space.

Here we meet an issue rife in Enfield: that existing spaces are rarely considered as an entity. An accident causes the Council to put up a warning sign, well-meaning people worry about traffic flow and pedestrian safety so pedestrians are fenced onto the pavement, new lighting is installed, somebody convinces the Council that an advertising screen or ATM should be installed, shopkeepers install ugly shutters. It's easy to see why clutter comes to urban space, but hard to understand why councils don't undertake an occasional audit to maintain the visual amenity of what is, after all, our living space.

Other than removing the clutter, especially the pavement railings which so clearly demonstrate to pedestrians that they are second-class, what other steps need to be taken? Top of the list, high in clear blue sky, must be reversing the absolute priority currently bestowed on traffic to the extent that it dominates the space, subjugates pedestrians, markedly reduces the attractiveness of the town as a place to shop, and is bad for our health. If the power of supermarkets is to be overcome in local town centres, ambience and people must take precedence over cars.

To achieve this at the Triangle a shared space scheme is proposed such that traffic is unrestrained by traffic lights – a contributor to clutter, engine noise and



The horse chestnut tree in leaf, August 2006



Warm red bricks and green railings, March 2010

poor air quality – but required to travel at a maximum 20mph so that priority between drivers and between drivers and pedestrians can be negotiated by eye contact. A new road surface would be required at a cost depending on the visual appeal which can be afforded, but which need not be expensive.

At this point it's a question of relying on the artist's eye, the engineer's understanding, and the support of the buildings' owners, to bring out the best in Enfield's heritage, create a community hub and social space; a place to enjoy a gossip, house a small gathering, have a coffee and do some shopping. Why not improve the surfaces over the years, feature local art, and enhance the space with dark green planting to complement the buildings and the warm red bricks the Victorians bequeathed to us?

David Hughes

New members

We warmly welcome the following new members:

Mr R. Akers, Mrs J. Baker,
Mrs J. Bex, Miss B. Cannon,
Mr & Mrs Carver, Mr P. Delrue,
Mrs J. Merrill, Mrs S. Paraskeva,
Ms C. Payne,
Mr & Mrs T. Shearman,
Mr M. Spinks, Miss J. Winterbottom.

Olive Sharman

We are sorry to report that the following members have died recently: Mrs J. M. Baker,
Mr P. Briggs, Mr D. Cullingford,
Miss J. A. Elms, Mrs L. Fromm,
Mr J. Lovesey, Mrs G. Sale,
Mrs M. Wilson, Mr R. F. Wiltshire.

President: Dr C.J.A. Jephcott

Chairman: Janet McQueen

Hon. Secretary: Richard Stones

Hon. Treasurer: David James

Office: 2 Parsonage Lane, Enfield,
Middlesex, EN2 0AJ.

Telephone: 020 8363 9495

When there is nobody in the office, messages left on the answering machine will be dealt with as promptly as possible.

Web site: <www.enfieldsociety.org.uk>

Helplines: For information on TES activities or to report matters you think need investigation or action, please phone the appropriate number below. Email addresses are given on the "Contacts" page on our Web site.

Architecture and Planning
020 8363 7707 (John Davies)

Coach Outings
020 8367 7374 (Janet McQueen)

Conservation Areas, Listed Buildings,
Green Belt
020 8360 5677 (Chris Jephcott)

Edmonton Group
020 8367 5920 (Monica Smith)

Footpaths and Walks
020 8367 5168 (Shirley Cotton)

Historic Buildings Group
020 8363 0031 (Stephen Gilbert)

Jubilee Hall Bookings
020 8360 3873 (Pat Keeble)

Membership
020 8367 6189 (Olive Sharman)

Press and publicity
020 8363 5732 (Bob Fowler)

Records and Research
020 8372 0092 (Leonard Will)

Trees
020 8360 5677 (Chris Jephcott)

Management Committee
Dave Cockle, Graham Dalling, John Davies, Robert Fowler, Stephen Gilbert, David James, Janet McQueen, Stuart Mills, Colin Pointer, Olive Sharman, Monica Smith, Derrick Stone, Richard Stones, Leonard Will.

Vice-Presidents
Mrs B. Dorrington, Lord Graham of Edmonton, Mrs P. Lowen, Mr D. Pam, Mr C. Pointer, Mr M. Saunders, MBE, Mr A. J. Skilton

Newsletter Editor
Leonard Will
(newsletter@enfieldsociety.org.uk)

The Enfield Society.
Registered in England as a limited company no. 312134.
Registered Charity no. 276451.

Printed by Studio Projects Ltd

ISSN 2042-1419 (Print)
ISSN 2042-1427 (Online)

Coach trip in June 2011 to Kentwell and Melford Halls with a guided tour round Long Melford Church

Photo: NT/Fisheye



Melford Hall

Our coach trip to Suffolk on Sunday June 12th will take us back to Tudor England.

Leaving Enfield at 9.30am we will arrive at Kentwell Hall when it opens at 11am, and then visit Long Melford church before going onto Melford Hall. All are within a 15 minute walk of each other, but the coach will be available to transport those who would prefer not to walk.

The Kentwell Hall we see today was built by the Clopton family who also rebuilt the church. The oldest structure is the moat house dating from the early 15th century while the house itself was extended from a brick built hall house, to a typical Elizabethan E plan during the 16th century. It is fully moated and has extensive grounds and interesting

outlying buildings. After lunch we can follow the route of the Clopton family across the fields to see the Holy Trinity Church of Long Melford – one of the finest medieval wool churches.

We will have a 50 minute guided tour round the church, with its separate and unusually large Lady Chapel – used as a school in the sixteenth century – original stained glass windows, pre-reformation art work and chantry chapels.

After this we will continue on to Melford Hall (National Trust) currently home to the Hyde Parker family. It was visited by Elizabeth I in 1578 and much more recently housed another famous visitor in Beatrix Potter who left a collection of drawings and memorabilia in the house.

Leaving Melford Hall when it closes, we will be back in Enfield about 7pm.

Cost is £28 per person, if you are not a National Trust member or £23 if you are.

Please make cheques payable to "The Enfield Society" and send them to, Coach Outings, Jubilee Hall, 2, Parsonage Lane, Enfield, EN2 0AJ

Please enclose a SAE and you will be sent a confirmatory slip with details of where and when to meet the coach.

Janet McQueen



Holy Trinity Church, Long Melford

Benches

In the last newsletter we asked you for suggestions as to where you would like some more benches. I would like to thank everybody who has made suggestions and can report that we have handed on a list of about 10 possible sites to the council who will look into the feasibility of erecting them. If they are agreeable then the Enfield Society will fund them.

Janet McQueen