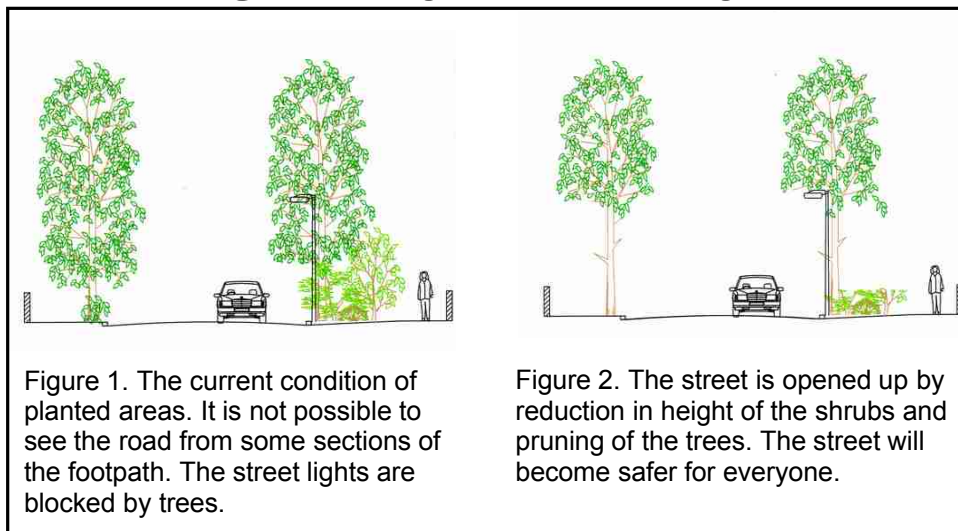


The newsletter of the Enfield Preservation Society

Cutting street trees and shrubs – do we want greenery or visibility?



Diagrams and captions from a paper prepared by the Highway Services department of the London Borough of Enfield, June 2006

These diagrams, part of a consultation document from the Council's Highway Services, helpfully illustrate the dire effect of the current policy for the treatment of the planted verges and trees throughout the borough. At its last meeting the Conservation Advisory Group was given a presentation on the proposed introduction of the policy in the Bush Hill Park Conservation Area.

The height of the shrubs is reduced to a uniform metre, irrespective of species, to improve sight lines for drivers and the branches of the trees are removed up to above the height of the street lamps (higher columns are envisaged for the area as part of the PFI scheme).

The aim is laudable, increased safety for pedestrians by opening up the visibility of footways. But this drastic solution ignores aesthetic considerations and the conclusions of the recently approved Conservation Area Appraisal for Bush Hill Park, which singles out the street greenery as its most significant feature. And, arguably, allowing drivers to feel able

to drive faster, could actually worsen safety for pedestrians. All this is to fulfil the Council aims and objectives of 'A Safer Enfield to Live Work, Study and Do Business in' (possibly) and 'A Cleaner Greener Enfield' (how?).

It should be possible to achieve the aims of better sight lines by selective pruning around entrances, whilst at the same time making allowances for the requirements of the different species in the verge shrubberies. There are many fine rhododendrons among them, dating back to the original layout of the estate. As for the trees, the Street Tree Management Programme is reducing their height, so not much greenery will be left in between!

This is a consultation exercise, so members with any strong views can make them known to the Highways Ground Maintenance Department. The consultation period is July, but the works won't be carried out till the autumn so there should be sufficient time.

Chris Jephcott

Situations Vacant

As highlighted in earlier Newsletters help is needed to enable EPS activities to continue. Specific job requirements will appear periodically in this Situations Vacant column in the hope that some members may be moved to volunteer for unpaid service, especially if they have relevant skills and experience. The following vacancies now exist; if a vacancy should interest you please get more information from the named contacts.

Evening Meetings Organiser

To obtain speakers for nine Thursday evening meetings at Jubilee Hall and to manage the arrangements. These meetings are a popular EPS feature and provide pleasure and information for members. No previous experience is necessary.

For further information contact Janet McQueen (020 8367 7374)

Trees Group Leader

A long established activity, the post provides the main contact between EPS and Enfield Council on all matters pertaining to tree management in Enfield. EPS also provides funding for the provision of trees in selected open spaces. A new initiative will be the development of the Society's proposed tree nursery to take shoots supplied by members and to grow them on until they can be planted out in the Borough. The Leader should be an enthusiast for and knowledgeable about trees.

For further information contact Mike Gadd (020 8366 6296)

Assistant Press Officer

To assist the Press Officer to maintain regular contact with local papers and to attempt to get EPS events in their weekly diaries. To prepare press releases and send to editors and to deal with enquiries from news desks by answering queries or passing to the relevant member of the Management Committee.

For further information contact Peter Mackey (020 8360 0804) or Monica Smith (020 8367 5920)

Tony Langston

Conservation

Cedar House, Green Lanes.

Following my report in the last newsletter, Enfield Council had taken the unusual step of putting a Stop Notice on the development. A revised application has now been received, which recreates the house externally in replica, plus the previously approved extensions. As good an outcome, subject to some tweaking, as possible in the circumstances.

Highlands replica

Another building which it is proposed to replace in replica is the last surviving unaltered pavilion on the Highlands Hospital site. Block E11 is part of the replacement residential development for the former Oaks and Elms ESMI (elderly and severely mentally impaired) Unit, now resited at Chase Farm. Developers Barratt North London claim the building is too damaged to convert, but we are not convinced that it will be possible to replicate the moulded terracotta brickwork surrounds to the windows and doorways and are opposing the proposal. The other pavilions did require very extensive alterations when converted into flats and a previous proposal to rebuild one in replica was successfully resisted.

Green Dragon Lane

Permission for the latest application to replace the former Enfield Park Nursing Home in Green Dragon Lane by ten flats was refused on grounds of inappropriate development and overbearing impact on 124 Green Dragon Lane. Ballater Ltd have now appealed to the Secretary of State. On this occasion there will be no public inquiry, but the appeal will be decided on the basis of written statements.

Chris Jephcott

Planning applications online

Weekly lists of planning applications are posted on the London Borough of Enfield Web site. It is also possible to search for applications by type, location, date or name of applicant, even if you don't know the application number. In many cases documents and plans are also available for viewing online, and you can submit comments.

Start at the planning and building control page: <http://www.enfield.gov.uk/Environment/planning/index.htm>



Shopfronts

Nationwide Building Society, Church Street

Do these illuminated fascia signs enhance the character and appearance of the Enfield Town Conservation Area? They replace the discreet former Howards signs and were approved on the basis that they represented a minimal difference in comparison to the existing shop front and so were difficult to resist on the basis of increased harm to the conservation area. If these blatant signs cannot be resisted then it seems anything goes in the shopping centre.

The application was deemed to comply with Policies (II) C 29 and 30 of the Unitary Development Plan. A pity that Policy (II) C 32 to 'ensure that proposed advertisement displays do not detract from the attractiveness or special character of conservation areas' could not have been invoked. To be fair this is something of an exception. Most of the

more garish shopfronts in the centre have never bothered to get planning permission and the Envirocrime Unit is slowly weeding them out.

I referred to the Pearsons new shopfront in the last News. This was referred to the Conservation Advisory Group for consideration, but only after the approval had been given. The reason stated was that delaying the decision would have resulted in the application running over time, which would have been detrimental to the performance of the service. So it seems that the performance of the service is more important than ensuring the best result, even for so prominent a building opposite the historic market place. So much for public consultation.

Enfield Council does have a Shopfront Policy for the borough. Like the UDP it is getting out of date. Perhaps a shorter, crisper document, to go with the new Local Development Framework, would be more likely to be effective?

Chris Jephcott

Planning applications

The following recent planning applications have been reviewed by the EPS Architecture and Planning Group:

19 Chase Green Avenue, EN2 8DX

- ♦ 3 storey block of 9 units with basement car parking

8 Chiltern Dene, EN2 7HH

- ♦ Conversion of a single house into two dwellings

Three applications from Orange for a telecommunications mast and equipment cabinets

- (i) On a traffic island opposite 1 Kenwood Avenue

- (ii) On a site near the junction of Bramley Road and Lonsdale Drive

- (iii) Adjacent to Boxers Lake Open Space

Planning outcomes

1 The Ridgeway, EN2 8NX

- ♦ Conversion of a care home into 9 units has been withdrawn, but a revised application has been re-submitted.

Oaks and Elms House, N21 1PN

- ♦ Demolition of the last pavilion block and erection of a replacement has been refused. See *Highlands replica* above.

John Davies

Planning decision on Spurs deferred

The revised planning application by Spurs to develop a very large, very controversial Academy/ Training Centre in the Green Belt was due to be decided on 11th July; the recommendation from the planning officer was that approval be given, with conditions. On the 7th July we were told that a decision would have to be deferred but that the planning meeting would take place as scheduled, since the Planning Committee would have to vote on the deferral proposal. At that meeting the planning officer told a packed audience that the Council now required a comprehensive ecological survey of the site and the surrounding habitats; he recommended deferring a decision. What he did not say was that the Council was wrong in proposing to grant permission subject, amongst many other conditions, to a summer survey of bats and bat roosts. Spurs' echolocation bat surveys were carried out on chilly evenings in October 2004 and English Nature made it quite clear to the Council that planning consent cannot be considered until a summer survey of bats has been undertaken – bats, of course, hibernate.

The 44 page Report to the Planning Committee covers, in great detail, all the protection policies and guidelines which should prevent this development which is in the Green Belt, in an Area of Special Character, and partly within a conservation area; yet, unconvincingly, this Report concludes that *very* special circumstances exist to outweigh the harm caused by Spurs' proposed inappropriate development in the Green Belt. We cannot possibly agree with this conclusion. Just one example – for this Special Character Area, under Policy G6 of the Unitary Development Plan the Council is duty bound to “(a) Resist vigorously developments which would damage the character and appearance of the area and (b) Seek to conserve and enhance the quality and landscape of the area”. How does a proposal to build a 11,806m² complex with large car parks, artificial football pitches and floodlighting, all on a 23 hectare site totally enclosed within a 2.5m high fence, sit within that Policy?

The very special circumstances in this case amount to Spurs' need for the development and the benefits to football nationally and regionally, the demolition of the existing pavilion (700m²), the reinstatement of historic hedgerows (negated by the need for 5.5m high ball-stop fences) and the proposed community partnership. We find these totally unconvincing. The weight given to “need” in the Report is partisan and excessive.

English Heritage wrote “Despite revisions to the design the proposal remains a very significant development into what is essentially a rural setting and in its wider context must be considered detrimental to the appearance and character of the conservation area.”

The Council's own Conservation Team state “concerns must be expressed at the clutter that unnecessarily accompanies this application – the fencing (which will give an unacceptable sense of petty enclosure) and the floodlighting (which will blaze across the night sky – human intrusion into the rural setting) – both of which will have an unacceptable affect on the open and rural character of the area” – and – “A notable negative element in the application is the fencing and the floodlighting. These would have a marked negative impact on the character and appearance of the Conservation Area and be harmful to its setting and that of Myddelton House and Forty Hall and their grounds. In heritage terms these elements of the application must be omitted before it could be recommended for approval.” These comments were also excluded from the Report and to date these harmful elements have not been omitted from the planning application.

Is it just pressure of work on Council officers that has made them overlook most of the compelling negative points about this proposal and then, oddly, to recommend approval? Is it relevant that Enfield Council was aware of Spurs' plans two years ago and that early last year the Cabinet agreed to grant them a 75 year lease; this decision was subject only to planning consent and was given “to improve public access to parts of the land” and to supporting “the proposals which were compatible with Green Belt land which should be of beneficial public use”? Unfortunately the public benefit will be minimal; the only real beneficiaries will be Spurs, with a private

development to satisfy their own special needs as a football club, answerable to its shareholders.

Tottenham is a successful and admired Premiership football club. Football is our national game but some things are even more important than football; we believe in preserving our heritage and maintaining our open spaces, which are under constant threat, so that future generations can continue to enjoy what we enjoy today. The Society remains totally opposed to this planning application and looks to the Planning Committee to reject it.

Colin Pointer

See the planning process in action

Enfield Council are now providing video recordings on the Internet (“Webcasts”) of some planning committee meetings. These may be accessed from the site: <http://www.enfield.ukcouncil.net/site/index.php>

The sound and video quality is not up to television standards, but the recordings do give a good flavour of the way that meetings are conducted and the nature of the discussion.



Video image of Colin Pointer presenting a statement about the Spurs' proposal, on behalf of the EPS, to a Planning Panel on 5th June 2006.

To follow the discussions in these meetings it is necessary to have the agendas and other papers, as it is assumed that participants will have read these and the details are not repeated orally. These papers are generally available on the Council's Web site at <http://www.enfield.gov.uk/Environment/planning/planning%20committee/planning%20committeeTOC.htm>

Leonard Will

Sales Table

Enclosed with this Newsletter is a list of items currently available from the Sales Table at Jubilee Hall meetings, from the EPS stand at the Town Show and from some retail outlets. If you would like to order any items by post please send the completed form, including a contribution towards postage as shown in the price list, to

EPS (Publications)
Jubilee Hall
2 Parsonage Lane
Enfield
EN2 0AJ.

EPS Christmas cards

The Christmas card this year is a wintry scene in Gentleman's Row. The price remains £1.50 for a packet of five of these cards, with envelopes. A few packs of last year's card of Forty Hall are also available at this price. Other packs still on sale are the following (£1.50 per pack of five cards of a single design)

New River Loop
Hilly Fields in the snow
Town Park and New River
St. Mary's and the windmill

One of each of these four cards is in the Mixed Pack (£1).

The printed text inside all the cards reads "With Best Wishes for Christmas and a Happy New Year"



Gentleman's Row



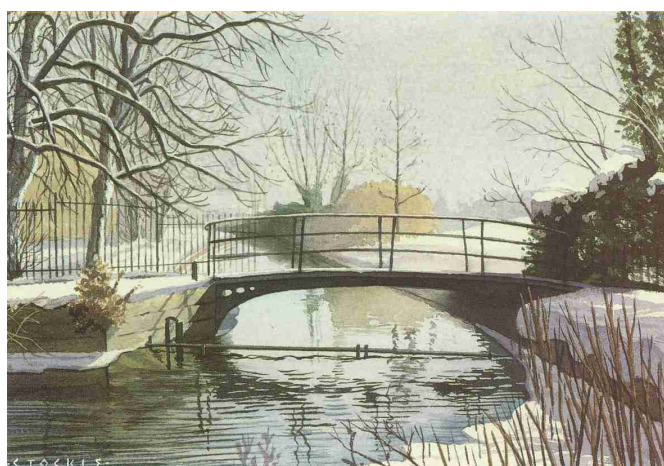
Forty Hall



Hilly Fields in the snow



New River Loop



Town Park and New River



St. Mary's and the windmill

The President's Column



As mentioned at the time, the last EPS News was delayed owing to illness. Unfortunately ill health has now forced Mike Gadd to give up his role as newsletter Editor as well as responsibility for trees. Mike was very successful since taking over the editorship from Valerie Carter and has produced some varied and well received editions. He also found the time to take an active role in coping with the ever pressing tree matters. We are very grateful for his contributions and hope he will soon return to better health. Leonard Will, who stepped into the breach last time has agreed to carry on compiling the News, at least for the time

being, but Mike's standing down again draws attention to the growing need to fill vacancies in the tasks that need to be done to maintain a vigorous and successful society. Hence the Situations Vacant list included with this edition. This was drawn up as the first result of a small working group which is endeavouring to find solutions to the problems facing the Society that I outlined in my last Column. Otherwise it is still work in progress.

'Breaking News' as they say. I have just received an email stating that Enfield Council's Planning Policy Division has appointed the consultants Urban

Practitioners to undertake an Area Action Plan (AAP) for Enfield Town. EPS has been identified as one of the key stakeholders and we may be contacted to seek our views on key issues and options. So watch this space, though not too expectantly, as the study is anticipated to take some ten months, after which it may, following examination by the Planning Inspectorate, form a key element of the Local Development Framework which is to replace the existing Unitary Development Plan.

Chris Jephcott

Meetings

Jubilee Hall meetings

Tuesday mornings 10 for 10.30 am

August – no meeting

26th September

The costume collection of the Museum of London. A talk by Mrs. Barbara Owen.

24th October

The night o'clock noose, by Christine Padwick (*Note that this is the fourth and not the last Tuesday of the month*)

28th November

The history of the New River – slides with a different look by John Cunningham

12th December

Join Joyce James for mince pies and a fun quiz.

Thursday evenings 7.30 for 8 pm

August – no meeting

21st September

China, the dragon awakes. A talk with slides by Stephen Gilbert.

19th October

Silver Street – a talk with slides by Harold Noble

16th November

Enfield in World War II, by Graham Dalling

December – no meeting.

Diary Dates

Sunday, 3rd September, 3.00 pm

Salsa in the park with the Merengada Band, Hilly Fields Bandstand.

Saturday-Sunday, 9th-10th September, 10 am to 7 pm

Autumn Show, Town Park. Visit the EPS stand. Enfield Museum Service and Enfield Archaeological Society will be in the Enfield Village area with activities for adults and children and you can take along any finds for identification.

Wednesday 13th September, 12.30 pm

Lunchtime piano recital by Lily Gosden at St. Mary Magdalene Church, Windmill Hill, Enfield. Meet **12.15pm** for 12.30pm start. Free, but donations welcome. Optional ploughman's lunch afterwards in the Church Hall (small charge)

Saturday-Sunday, 16th-17th September

Open House London annual event. (See below).

Monday 2nd October – Thursday 30th November

Black is beautiful, an exhibition documenting the history of black style, fashion and beauty in Britain since World War II. At Weir Hall Library, Edmonton. Open Monday and Wednesday 9 am -7 pm, and Friday and Saturday 9 am -5 pm.

Saturday 28th October, 10 am – 4 pm

Edmonton Hundred Historical Society Day Conference with the theme *Local history research – past, present and future* at Jubilee Hall. Contact Pat Keeble, 15 Onslow Gardens, N21 1DY (020 8360 3873)

7th November – 3rd June 2007

Come out to live – come out to play – an exhibition celebrating suburbia and featuring posters on loan from the London Transport Museum. At the Museum of Domestic Design and Architecture, Cat Hill. Admission free. Open Tuesday to Saturday 10 am to 5 pm and 2-5 pm Sundays (closed Mondays)

Open house London

Annual event, 16-17 September

Five hundred contemporary and historically significant buildings in London will open their doors free of charge to the public during the capital's biggest architectural event. The Buildings Guide will be available from mid-August by visiting www.openhouse.org.uk or calling the Information Line: 09001 600 061. Calls are charged at 60p per minute.

Details of heritage open days outside London (7 to 10 September) will be found at www.heritageopendays.org.

Future Walks

Note: Train details are correct at press date but the EPS cannot accept responsibility for last minute changes. Please always check: for National Rail train enquiries/times ring 08457 48 49 50; for London area Tube, DLR and bus details, ring 020 7222 1234.

Reduced price train travel: GroupSave Cheap Day Return tickets allow 3 or 4 adults to travel together for the price of 2 adults on First Capital Connect, Silverlink or One Railway. Even for travel to the start of linear walks, GroupSave Day Return tickets are normally cheaper than buying a standard price single.

Wed 23 August

Meet **10.15am** outside Sainsburys, New Barnet for 2.5 hour circular walk via Hadley Woods and Monken Hadley. Shorter option. *Leader:* Ken Cooper

Sat 26 August

Meet **2.30pm** at Cockfosters Station for about 3 hour circular walk in Enfield's countryside via Camlet Moat and Covert Way nature reserve. *Leader:* Monica Smith

Mon 28 August

Meet **10.30am** at Berkhamsted Station (9.54am train from Euston) for 9 to 10 mile circular walk in classic Chiltern scenery via Aldbury. Shorter option. Bring lunch or pub food probably available. By car, about 45 mins via M25 (junction 20) & A41. *Leader:* Colin Adams

Wed 6 September

Meet **10.14am** at Broxbourne Station (9.46am train from Southbury change at Cheshunt for 10.10am train) for 5 mile circular walk via River Lea, Wormley, Baas Hill and New River. *Leader:* Christine Fookes

Mon 11 September

Meet 10.30am Hertford North Station (10.01am train from Enfield Chase) for 8 to 9 mile circular walk in mid-Herts via Letty Green. Shorter options. Bring lunch or pub food available. *Leader:* Stuart Mills

Wed 13 September

Lunchtime piano recital by Lily Gosden at St. Mary Magdalene Church, Windmill Hill, Enfield. Meet **12.15pm** for 12.30pm start. Free, but donations welcome. Optional ploughman's lunch afterwards in the Church Hall (small charge).

Wed 20 September

Meet **11.00am** at Brookmans Park Station for about 6 mile circular walk via Water End exploring geological features. Finish about 4.00pm. Bring lunch or pub food available. Public transport: either by 10.07am 610 bus from Enfield Town or by train at 10.48am from New Barnet Station or 10.55am from Potters Bar Station. *Leader:* Norman Coles

Sat 30 September

Meet **10.37am** at Chorleywood Station ticket office (10.00am Met Line train from Baker Street) for about 9 mile circular walk through pretty Chiltern scenery. Possible shorter option. Bring lunch or pub food available. By car about 45 mins from Enfield via M25 (junction 18) & A404. *Leader:* Stuart Mills

Wed 4 October

Meet **10.15am** at the Odeon Cinema, Barnet (307 bus from Enfield) for about 3.0 hour circular walk via Totteridge and Dollis Valley. *Leader:* Ken Cooper

Sun 15 October

Date reserved for possible coach walk. Details will be available on walks.

Wed 18 October

Meet **10.15am** at 307/121 bus stop next to Trent Park Riding Stables on Enfield Road for linear walk in Enfield's countryside finishing on The Ridgeway near Chase Farm Hospital. Shorter option of about 2.5 hours ends at the Botany Bay lunch break. Following lunch optional 1.5 hour afternoon walk. *Leaders:* Carol Cope & Kinu Ohki

Sat 28 October

Meet **10.30am** at Wadesmill Village centre (about 2 miles north of Ware off A10) for about 9 mile circular walk in the scenic Rib Valley with a lunch stop in the pretty village of Standon. Bring lunch or pub food probably available. *Leader:* Colin Adams

Wed 1 November

Meet **10.20am** at Chingford Station (313 bus terminus) for 2.5 to 3 hour circular walk in the Autumn colours of Epping Forest. *Leader:* Norman Coles

Sat 11 November

Meet **10.30am** at St Margaret's Station (9.46am train from Southbury change Cheshunt for 10.10am train) for about 7.5 mile circular walk via Haileybury College, woodland, nature reserves and Amwell. Bring lunch or pub food probably available. *Leader:* Brian Frear

Wed 15 November

Meet 10.15am Cuffley Station (10.01am train from Enfield Chase) for about 2.5 hour linear walk ending at Crews Hill Station. *Leader:* Brenda Brown

Sat 25 November

Either meet Roy at Platform 9 Kings Cross mainline station at **9.55am** (arrival time of 9.29am train from Enfield Chase) *or* **10.45am** at Woolwich Arsenal Station (from London Bridge) for linear walk of about 6 to 7 miles ending at Falconwood Station. Follows parts of the Green Chain Link via Lesnes Abbey and Oxleas Wood. Bring lunch or food available. *Leader:* Roy Nicholls

Wed 29 November

Meet **10.30am** at The Arkley Hotel, Barnet (307 bus) for morning walk of about 2.5 hours through Barnet's countryside with optional lunch stop at The Gate, Arkley, followed by 1 hour walk returning to the start by mid-afternoon. Those wishing to leave from The Gate can return to start by 107 bus. *Leader:* Ken Cooper

Stuart Mills

Enfield heritage walk

The annual walk round Enfield Town took place on 21st June and attracted 90 people. Following an introductory talk about the Market Place and Enfield Grammar School by Graham Dalling, the walkers were taken by their guides to see the historical buildings in Enfield. These included St. Andrew's Church and the Tudor Room, where David Pam related their history.

The evening ended at Jubilee Hall, where refreshments were available, and there was an opportunity for the walkers to talk to EPS members.

I would like to thank David Pam, Graham Dalling, the guides and other members of EPS who helped to make the evening a success.

Sadie Isaksson

CONGRATULATIONS to Data Connection, an associate member of EPS, for winning the Queen's Award for Industry for the third time. This is the UK's most prestigious award for business performance and was given to the company for outstanding export achievement. Data Connection has always been a generous donor to local charities including the New River Loop Restoration Appeal.

Monica Smith

Summer trip to Holkham Hall, Norfolk



Photographs by Shirley Cotton

A most pleasant day out on June 4th enjoyed by some 50 plus members. The weather was reasonably kind and the Hall itself was extremely interesting with very many outstanding paintings and other objects of note particularly the museum containing many early farm vehicles.

We had an unexpected surprise when we arrived at the Hall as waiting for us at the entrance was Wally and his wife who will be remembered by most of the older members as a driver with Enfieldian who took us on many trips before retiring and moving to Norfolk. It was delightful to see them again after such a long time and very much appreciated that they had taken the trouble of travelling to Holkham just to see us. Jim Deamer to be congratulated once again for organising such a splendid event. Details of the next outing, to Orford Castle and Woodbridge, are given on page 8.

Beryl Dorrington



Coach walk at Godalming

Despite almost non-stop rain 45 members of the Footpaths Group enjoyed a lovely walk in the Godalming area on 21st May. According to the Met. Office six times the average daily rainfall fell during the afternoon alone. Some spent the afternoon at Guildford Cathedral but this picture by John Bourne shows thirty three wet but uncomplaining walkers at the top of Hydons's Ball. Sunday 15 October has been reserved as a possible date for the next coach walk. Details will be available on walks.

Monica Smith

EPS Directory

Hon. Secretary Stephen Hoyer

Hon. Treasurer David James

Office 2 Parsonage Lane, Enfield,
Middlesex EN2 0AJ.
Telephone 020 8363 9495

*When there is nobody in the office,
messages left on the answering machine
will be dealt with as promptly as
possible.*

Website: www.enfieldpressoc.org.uk

Helplines

For information on EPS activities or
to report matters you think need
investigation or action, please phone
the appropriate number below:

Architecture and Planning
020 8363 7707 (John Davies)

*Conservation Areas, Listed
Buildings, Green Belt*
020 8360 5677 (Chris Jephcott)

Coach Outings
020 8360 8974 (Jim Deemer)

Footpaths and Walks
020 8367 5168 (Shirley Cotton)

Historic Buildings Group
020 8363 0031 (Stephen Gilburt)

Jubilee Hall Bookings
020 8360 3873 (Pat Keeble)

Membership
020 8886 3829 (Pat Atkins)

Records and Research
020 8372 0092 (Leonard Will)

Trees
[vacancy - see page 1]

Management Committee
Pat Atkins, John Davies, Beryl
Dorrington, Stephen Gilburt,
Stephen Hoyer, David James, Tony
Langston, Janet McQueen, Peter
Mackey, Stuart Mills, Pam
Pemberton, Peter Perryman, Colin
Pointer, Monica Smith, Stanley Smith,
Leonard Will.

President
Dr. C.J.A. Jephcott,

Vice-Presidents
Mr A.J. Skilton, Mr D. Pam, Mr S.R.
Smith, Mr W.T. Woodfield, Mrs P.
Lowen, Lord Graham of Edmonton,
Mr J.W.E. Jackson, JP, Mr M.
Saunders, MBE, Mr C. Pointer.

Newsletter Editor
newsletter@enfieldpressoc.org.uk

Enfield Preservation Society.
Registered in England as a limited
company no. 312134.
Registered Charity no. 276451.

Printed by Studio Projects Ltd

Coach outing : visit to Orford Castle and Woodbridge, Suffolk. Sunday, 24th September 2006



Picture of Orford castle by courtesy of Simon
Knott, from the *Suffolk churches* Web site at
www.suffolkchurches.co.uk

This trip gives us the opportunity of a
visit to a royal castle built by Henry II for
coastal defence in the 12th century, an
English Heritage site. It has a magnificent
keep which is mostly intact, together with
three immense towers reaching to nearly
90 ft, offering, to those willing enough to
ascend the heights, fine views over the
Suffolk countryside.

At the end of our visit we journey to the
pleasant little town of Woodbridge, a few
miles away. There we shall have the

opportunity for lunch and exploration of
the town. Situated on the river Deben
there is much to explore. With 1400 years
of recorded history, the town has retained
an interesting variety of historical
architecture, including an ancient tide
mill on the river front which is open to
visitors (entrance fee £2.00, concessions
£1.50). Perhaps the town's most well-
known inhabitant was Edward Fitzgerald,
poet and translator, famous for his
translation of the Rubaiyat of the Persian
poet, Omar Khayyam. Fitzgerald's initials
are carved in the lintel over the front door
of the house in which he lived.

We depart from the Genotin Road bus
stop in Enfield Town at 8.30am
(Winchmore Hill bus stop at the junction
of Bush Hill Road and Ridge Avenue
N21 at 8.15 am). The cost of the trip,
inclusive of coach fare, driver's gratuity
and entrance to Orford Castle and street
guide to Woodbridge, is £16.50.
(Members of English Heritage £12.00,
senior citizens £15.40, children 5 -15,
£14.30). Please note that entrance to the
tide mill is NOT included.

When booking please indicate where you
wish to board the coach and state clearly
whether you are a member of English
Heritage. Cheques should be made
payable to Enfield Preservation Society.
Confirmation of bookings is made ONLY
if a sae is received. Send the completed
form to Jim Deamer, 32, The Orchard,
Winchmore Hill, N21 2DH

A Member's Memories

Ms. Maureen Roussel (née Atkins) is a
member of EPS who now lives in
Wales. She purchased David Pam's
*The Royal Small Arms Factory and its
workers* when she saw the item about
reduced price copies, kindly donated by
the author, in the last Newsletter (There
are a few copies left at £9). The book
brought back many memories about her
family links to the RSA. Her mother,
Maude Atkins (née Allsop) worked
there before and during the First World
War as did her uncle, Arthur Amies,
while a cousin was on the security staff
in the 70s and 80s. Maureen attended
the Convent in London Road, worked
at branches of the Midland Bank for
many years and taught jewellery
making at Theobalds College so may
be remembered by some members.

Monica Smith

We want to hear from you

Contributions to this newsletter in the
form of articles, photographs, letters to
the editor and comments on current
issues within the scope of the Society are
most welcome, and should be sent to
"newsletter@enfieldpressoc.org.uk" or by
post to Leonard Will, 27 Calshot Way,
Enfield EN2 7BQ.

We may not be able to publish
everything, and the editor reserves the
right to shorten or modify contributions.
All items will be attributed to their
authors - anonymous items will not be
published.

New members

*We warmly welcome the following
new members:*

Mr C. Brutley, Mrs B. Dhajoo, Mrs
L. Hawkins, Miss B. Jenkins, Ms R.
King, Ms B. Lea, Mr R.J. Phippin,
Mrs M.B. Tong, Mrs K. Williamson