

THE HERTFORD LOOP LINE RAIL

ALE TRAIL

A train and walking guide
to the best BEER

From ALEXANDRA PALACE
To WATTON-AT-STONE

Explore great pubs and other venues within
easy walking distance of each station.



This booklet also describes local
highlights close to each station...



12 Stations



Over 20 Pubs and Venues



1 Micropub



2 Taprooms

WELCOME to our 'half-pint' sized guide to pubs and bars serving quality beers and ciders within easy walking distance to and from stations along the Hertford Loop Line. It brings together the joy of exploration with the relaxation of not needing a designated driver—perfect for sampling great drinks and meeting the locals who take pride in serving, crafting, and sharing them.

Whether you are a seasoned beer enthusiast or just looking for a unique way to experience the area, this route is both convenient and full of character!

THE HERTFORD LOOP LINE began when Great Northern Railway (GNR) opened its new branch line from Wood Green to Enfield on 1st April 1871. There were initially just two intermediate stations on the branch line: Palmers Green and Winchmore Hill. Bowes Park opened later on 1st April 1880. On 4th April 1910, the Cuffley extension was opened with its new stations: Grange Park, Enfield Chase, Gordon Hill, Crews Hill, and Cuffley. The First World War delayed completion of the next extension from Cuffley to Stevenage for freight only. On 4th March 1918, the 'Hertford Loop' was born. The line finally opened to passengers on 2nd June 1924 when a new station at Hertford North was opened.

Local exploring...

Look out for these sections, which highlight interesting places to see and enjoy...



RAILWAY 200 celebrates the past, present, and future of rail. 2025 is the 200th anniversary of the birth of the modern railway.

BRITAIN AND THE WORLD CHANGED FOREVER!



CAMRA is one of the most successful consumer organisations in Europe. Founded by four beer lovers in 1971, today CAMRA represents over 150,000 beer drinkers and pub-goers across the UK. Their vision is to have access to quality real ale (or 'live beer'), cider, and perry in thriving pubs and clubs in every community.

ENFIELD AND BARNET CAMPAIGN FOR REAL ALE

Enfield and Barnet CAMRA Branch was established in December 1974 when real ale was removed from local pubs, the branch lent out hand pumps, supported free house ventures, and organised beer tents, leaflet campaigns, and tastings. They also lobbied for extended pub hours and against issues such as short measures. Over the years, the branch has balanced campaigning with an active social programme, including local pub rambles and an annual minibus excursion to countryside pubs. The branch organise and present their area **Pub Of The Year** award and are also responsible for the selection of local pubs for **CAMRA's Good Beer Guide**.

INDIE BEER (Independent Beer) is a new campaign by people who care about the quality and flavour of the beer they produce. The campaign was launched by the Society of Independent Brewers and Associates (SIBA) with the support of organisations like CAMRA. Real ale is the name coined by the Campaign for Real Ale (CAMRA) for ale that is "brewed from traditional ingredients, matured by secondary fermentation in the container from which it is dispensed, and served without the use of extraneous carbon dioxide."

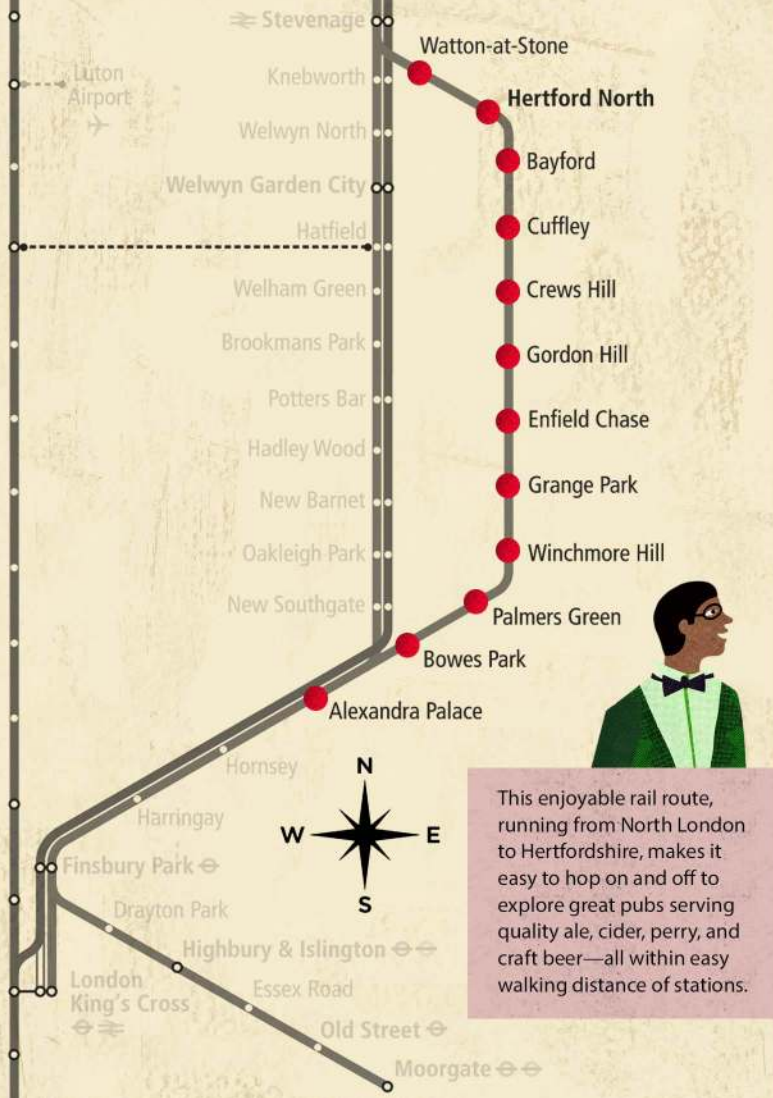


To check on pub opening times and when food might be available please go to the CAMRA website: <https://camra.org.uk/pubs>



PLEASE DRINK RESPONSIBLY!





This enjoyable rail route, running from North London to Hertfordshire, makes it easy to hop on and off to explore great pubs serving quality ale, cider, perry, and craft beer—all within easy walking distance of stations.

GREAT NORTHERN

The **Great Northern Railway** was first established in 1846 to build a line between London and York. Great Northern became a part of Govia Thameslink Railway in 2014. Their rail services in this area operate on the southern end of Britain's East Coast Main Line, with trains running to and from London King's Cross and Moorgate.

TICKETS

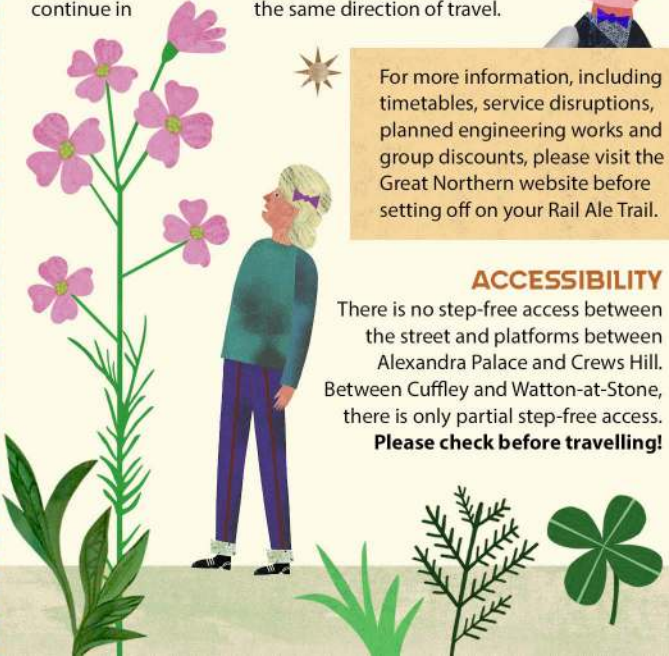
A valid ticket is required for your journey on Great Northern. This can be purchased in advance or you can tap in and out with an Oyster Card or contactless payment methods. A return ticket will allow you to disembark the train and re-join as long as you continue in the same direction of travel.



For more information, including timetables, service disruptions, planned engineering works and group discounts, please visit the Great Northern website before setting off on your Rail Ale Trail.

ACCESSIBILITY

There is no step-free access between the street and platforms between Alexandra Palace and Crews Hill. Between Cuffley and Watton-at-Stone, there is only partial step-free access. **Please check before travelling!**



ALEXANDRA PALACE STATION

Local exploring...

This is the last remaining of three stations that once stood at Alexandra Palace. The Palace itself opened in 1873, but was destroyed by fire and rebuilt in 1875. It was badly damaged by fire again in 1980. The Palace features a Victorian theatre, ice rink, event and exhibition space, food and drink outlets, and a nature reserve. It also has a great view over London. The Palace is known by several names including 'Ally Pally' and 'The Palace of the People'. When heading to the 'Goodness', look out for the New River.



1. The Starting Gate / Station Rd, N22 7SS (1-min walk from station)

Built in 1875, at the same time as the opening of the second Alexandra Palace, it was originally the Palace Café before becoming a pub in 1896, known as the Alexandra Palace Hotel. The current name refers to the now disappeared horse racing track that opened in June 1868. Internally, this is an impressive corner pub retaining many late-Victorian fittings, notably a series of framed watercolour paintings of local scenes, several full-height timber and etched glass partitions, an old circular bar counter with a surviving section of snob screens and a number of baffles. The bar supports four hand pumps with at least two real ales available.

2. The Prince / 1 Finsbury Rd, N22 8PA

(7-min walk from station)

A good looking two-roomed pub which the local community succeeded in having listed as an Asset of Community Value in November 2015 and then acquired the pub in 2016.

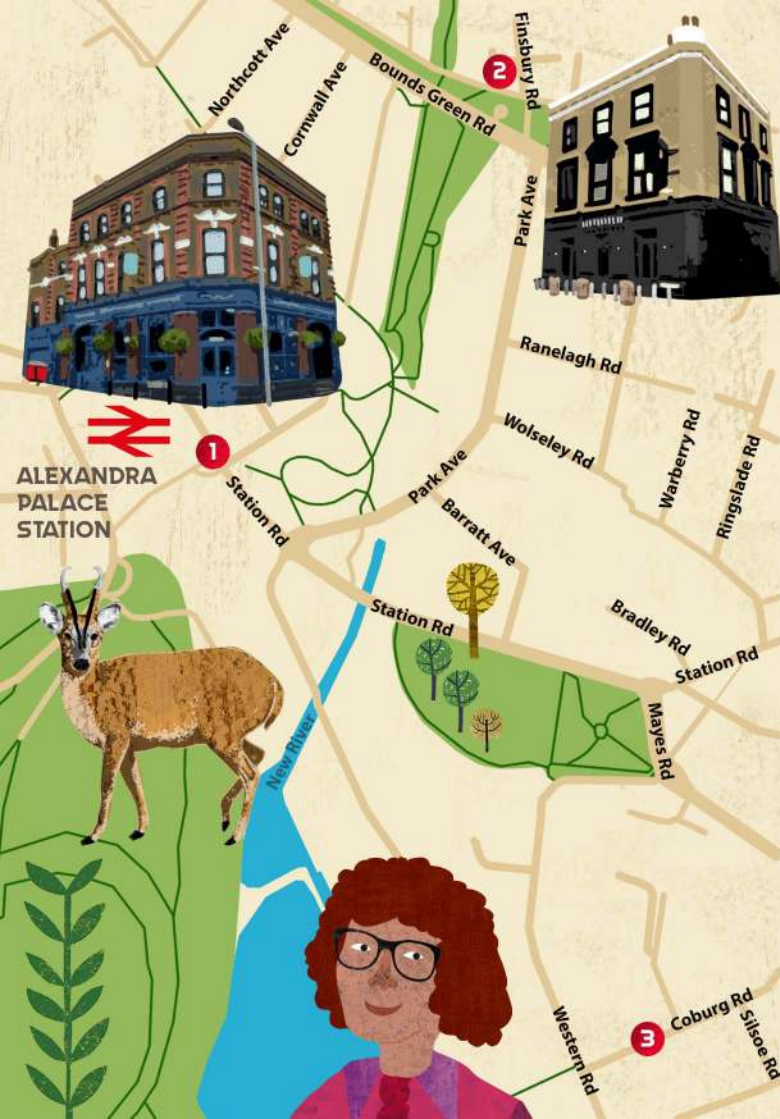


3. The Goodness Brewery & Tap Room / 5a Clarendon Yard, Coburg Rd, N22 6TZ

(10-min walk south from station)

A small batch Indie Brewer founded in 2018 by a quintet of friends in the Wood Green area. They brew vegan and gluten free beers and have now expanded the range to include a wide choice of beer styles. Most of their output is keg but they do occasionally produce a special cask ale batch which is invariably available in the nearby Prince as well as their own tap room. The spacious Goodness Taproom adjoins the brewery and is open Thursday to Sunday—it does have several special events, so it is worth checking the brewery website before making a trip.

They make great pizzas too!



BOWES PARK STATION

Local exploring...

To the north of the station is a single siding in between the two running tracks which is regularly used to turn around trains heading to Bounds Green Depot just north of Alexandra Palace. The local businesses in Myddleton Road are well-worth visiting as is the market on the first Sunday of every month. The train station is a short walk from Bounds Green Underground Station on the Piccadilly Line.



4. The Bohem Tap Room / 120A Myddleton Rd, N22 8NQ (2-min walk from station)
Although not qualifying as a place for real ale, this small shop conversion bar is more than worthy of mention. It is the original tap room for the Bohem Brewery that used to be a short distance down the road until brewing moved to Tottenham. The bar provides a range of Czech craft beers by a Czech brewmaster using mainly Czech ingredients. It is open from 16:30 on most days.

5. The Hillbilly Social / 101 Myddleton Rd, N22 8NQ (3-min walk from station)
It was formerly known as the Step—a previous pub, café, and restaurant which shut down in 2020 and was purchased by developers. But local residents raised funds, purchased the building in May 2023, and brought it into community ownership. Actively supporting the monthly Sunday market, the tenants run the bar and showcase their range. Lacking a cellar, it offers keg products only, but the five keg taps have three brewery ales available alongside a couple of guesters.

6. The Springfield Tavern / 133 Bounds Green Rd, N11 2PP (3-min walk from station)
Originally opened as a hotel in 1896, this large Victorian building is now a spacious one room pub renowned locally for its Thai kitchen and its large external courtyard garden. It is also a good pub for watching major sporting events. The bar supports three real ale hand pumps with Greene King IPA, a permanent beer, alongside up to two other national brewery ales.

7. The Ranelagh / 82 Bounds Green Rd, N11 2EU (10-min walk from station)
This is another impressive looking Victorian pub which now has a modern interior décor and a large, pleasant beer garden. The bar supports ale hand pumps and there are usually at least two ales from national brewers available. However, the pub has more of a focus on craft ales, with up to ten craft taps dispensing modern craft beers and a varied food menu to attract a younger demographic moving into the Bowes Park and Bounds Green areas.



PALMERS GREEN STATION (wc)

Local exploring...

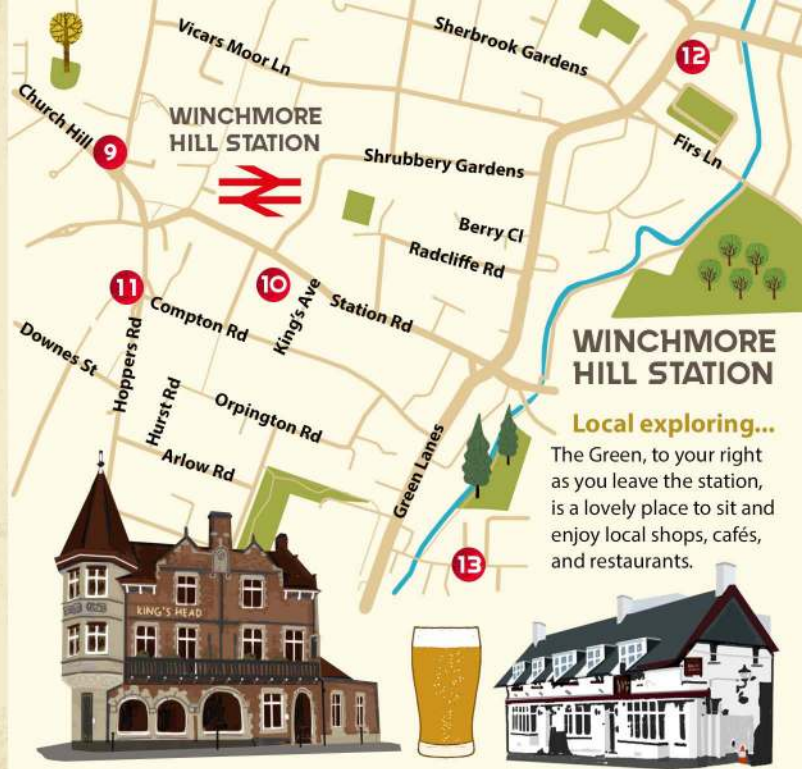
There are mosaics and murals in and around the station. Turn left to the shopping area or right for Broomfield Park. There is a great coffee shop at the entrance to the station. Look out for the area known as The Triangle at the bottom of the hill, which features a three-faced clock and a light sculpture celebrating a Suffragette meeting held here in 1914.

8. The Fox / 413 Green Lanes, N13 4JD

(7-min walk from station)

It is a large landmark corner house dating back to 1704 with a distinctive turret and exterior plaster relief decorations. These were retained during a period of closure and redevelopment which saw the upper floors and car park converted into flats.

The ground floor bar retains the Fox's high ceilings and wooden floors and incorporates Edwardian-style tiling, heritage colours, feature lighting, and leather-covered banqueting seating. Two real ales are available from independent brewers. It was Enfield's first pub to become an Asset of Community Value after a campaign in 2015 by the Southgate District Civic Voice.



WINCHMORE HILL STATION

WINCHMORE HILL STATION

Local exploring...

The Green, to your right as you leave the station, is a lovely place to sit and enjoy local shops, cafés, and restaurants.

9. The King's Head / 1 The Green, N21 1BB (2-min walk from station)

Built in 1899, following the opening of the Great Northern Railway Station in 1871, this is a large imposing building with a projecting corner turret overlooking The Green. Now run by the Geronimo Arm of Youngs, it functions as a gastropub. The interior has been opened out creating a vast dining area and a comfortable drinking area opposite the bar with a row of high butchers block tables.

10. The Queens Head / 41-43 Station Rd, N21 3NB (2-min walk from station)

Just down the hill from the station is the Queens Head, now a one-room pub with the internal space wrapping around the L shaped bar. Three real ale pumps are on the bar usually dispensing beers from Stonegate's National list. There is no garden, but the pub does have a small, pleasant courtyard out the back.



11. The Salisbury Arms / Hoppers Rd, N21 3NP (4-min walk from station)

Dating from 1866, this large imposing Victorian pub used to house a public saloon, snug, and off-sales rooms, but nowadays has been opened out into one interconnected space radiating around the main bar. This is a popular pub for dining during the day and early evening and then becomes more popular with a younger demographic later in the evening. The bar supports four hand pumps and there are usually at least two national brewery ales available. The pub has a very pleasant external terrace area to the front and a larger courtyard area to the side making it a good pub for alfresco drinking on a fine day.

12. The Little Green Dragon / 928 Green Lanes, N21 2AD (13-min walk from station)

Enfield and Barnet's first (and still only) micropub opened in 2017. It is a traditional small-shop conversion into an ale house and is a very good example of the genre. The owner completed a Charity cycle ride around 100 micropubs in 2015 and decided to open his own. It takes its name from the long gone, much loved, Green Dragon Public House nearby (now a Waitrose). Having up to eight rotating ales with four real ales straight from the barrel and four from key keg, it is now a regular winner of the local CAMRA branch pub of the year and for good reason. The eclectic internal seating is complemented by pavement seating and tables and the courtyard increases the space for alfresco drinking.

The pub was the 2018 and 2024 Greater London Pub of The Year.

13. The Orange Tree / 18 Highfield Rd, N21 3HA (13-min walk from station)

This old-fashioned, original back-street local was in the Good Beer Guide from 1995 for 28 consecutive years, until its omission in the 2024 edition. Originally a Taylor Walker house with the sign still outside, it has been a free house for many years. Nowadays, the long-term landlord tends to provide up to four ales from the Greene King stable, but the quality of the ales is reliably high. The interior is a bit of a time-warped with every ledge and wall surface covered in Bric a Brac and pub or brewing memorabilia. Hidden down a side road, the pub is just a few yards from the New River Walk and has the benefit of a large beer garden to the rear.



GRANGE PARK STATION

Local exploring... Whilst residential in nature, there are a few independent shops and the Cheyne Walk Open Space nearby. There is a flood storage area here to hold back heavy flows in the Salmons Brook when there is heavy rainfall.

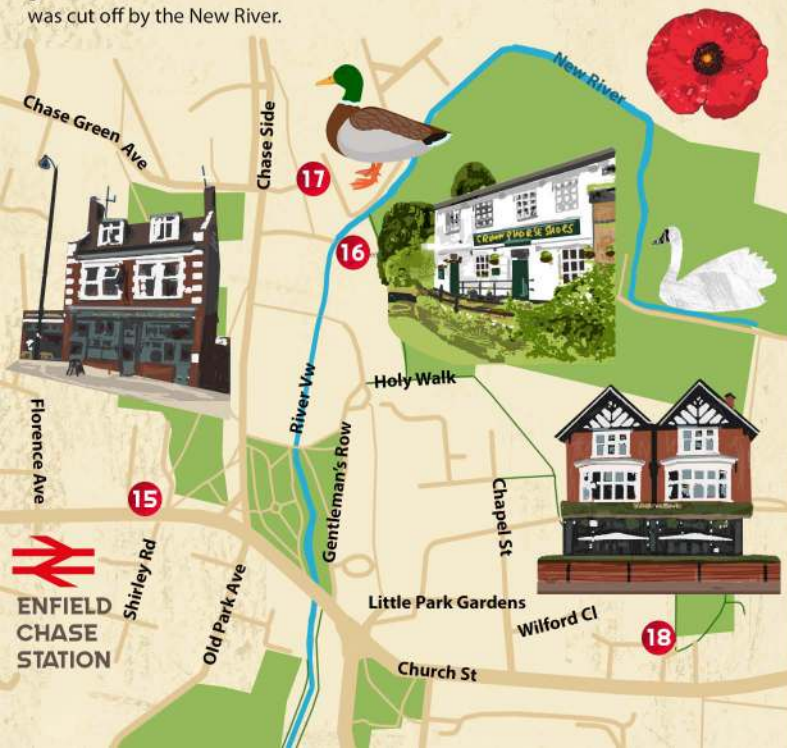
14. The Gryphon / Vera Avenue, Grange Park, N21 1RE (1-min walk from station)

Just along the road from the station is The Gryphon. For many years, this was a Harvester. However, in September 2021, it became an Ember Inn offering two regular beers, Fullers London Pride, and Sharps Doom Bar alongside one or two guests, usually from other national brewers, from the Ember list. It is very much food-led still, but has a comfortable lounge area and a sizeable outside garden.

ENFIELD CHASE STATION (wc)

Local exploring... There is a small coffee shop on Platform 1. Look out for the award-winning gardening and the large historical mural on Platform 2, celebrating the area. There is more art on both platforms and mosaics outside the station. An Enfield Town Art Trail map is available from staff. Enfield Town boasts historic buildings, the world's first ATM, and many independent shops and restaurants.

There are open spaces to enjoy such as the Chase Green, Chase Green Gardens, the New River Loop, and the Town Park. Look out for the River View and Gentlemen's Row with its many fine Grade II listed 16th to 19th Century houses. The footpath in front of the houses originally formed the boundary of Enfield Chase and the gardens to the west were encroachments on the Chase when this section was cut off by the New River.



15. The Old Wheatsheaf / 3 Windmill Hill, Enfield, EN2 6SE (1-min walk from station)
This attractive pub is on Enfield's Local Heritage List. Almost opposite the station, it has etched curved bay windows and brown glazed brick facing. It still retains a two-bar set up, each only accessed from the street with inter-war features such as the fireplace in the right-hand bar which has delightful Art Nouveau tiling. The pub now benefits from a well-appointed back garden with lots of individual cabins around the edge. Three to four real ales from national brewers are usually available.

16. Crown and Horseshoes / Horseshoe Lane, Enfield, EN2 6PZ

(8-min walk from station)

In just a few minutes, the historic walkway of Gentlemen's Row that follows the New River, will lead you to two good pubs. The first is the Crown and Horseshoes, part of the Greene King Pub and Flame Grill Arm. The two entrance doors hint at a previous multi-room layout, but these days it has one sizeable comfortable open-plan interior. The pub also benefits from a very large rectangular garden area at the back with its own entrance from the New River where you can often see moorhens building nests as well as the occasional swan. The Crown and Horseshoes is a Grade II Listed building.

17. The Cricketers / 19 Chase Side Place, Enfield, EN2 6QA

(9-min walk from station)

Around the corner from the Crown and Horseshoes are the McMullen-run Cricketers. Now one internal space with a central serving bar and areas at each end, there are plenty of cricketing artefacts and memorabilia as one would expect. The pub also has a small outside courtyard area to the side. The bar supports four real ale hand pumps that usually dispense McMullen AK and IPA and two others from the brewery range.



18. Kings Head / 9 Market Place, Enfield, EN2 6LL

(10-min walk from station)

An imposing pub building situated at the back of Enfield Town's market square, it was originally built in 1899 replacing a 17th Century Inn of the same name. The front bar retains the impressive U-shaped wooden servery with a small snug room area to the left-hand side and then a comfortable dining room beyond to the right. Independently owned, the bar top supports three real ale pumps. Greene King IPA and Sharps Doom Bar are permanent beers. The third pump changes and sometimes has beers from the New River Brewery.

GORDON HILL STATION (wc)

Local exploring... Look out for artwork at the station including a Jubilee mosaic and area map on Platform 2, and an interesting waiting room with an exhibition about the station. The covered elevated walkway has windows revealing a wildlife area. The London Loop can be easily accessed from the station as can the Enfield Chase Woodland creation area. There is a coffee shop in the Ticket Hall. A photographic book of the Hertford Loop is on sale here.



20. The Moon Under Water / 117 Chase Side, Enfield, EN2 6NN

(10-min walk from station)

The Enfield branch of JD Wetherspoons was one of their first pubs when it opened in September 1988 on the site of the former British School. It has also been a meeting room, milk distribution centre, wine wholesaler, and Greek restaurant. The internal space has impressive high vaulted ceilings providing three separate drinking areas and a small outside section to the rear. The bar supports two banks of five hand pumps. There are some interesting ale options available alongside the usual Wetherspoon house ales.



19. The Wonder / 1 Batley Rd, Enfield, EN2 0JG

(10-min walk from station)

Walk to Ridgeway turning left/west out of the station along Lavender Hill to reach this great old-fashioned two-bar back-street community local that achieved Asset of Community Value status in 2016. Internally, it is still the original two-bar set up. The larger public bar has a real fire, dart board, as well as a piano regularly played from 17:00 to 19:00 on Sunday. The quieter lounge bar also has a fruit machine.

There is an outside seating area with benches. A third of the space is covered with a large marquee to provide undercover seating. A pizza-van offers food to the pub on Tuesday and Thursday to Saturday evenings. This is a McMullen's pub and both bars support three hand pumps. There are usually three ales from the McMullen's stable.



21. The Ridgeway / 76 The Ridgeway, Enfield, EN2 8JF

(15-min walk from station)

A slightly longer walk in the direction towards the Chase Farm Hospital will bring you to The Ridgeway. Part of the Ember Inns chain, this is a smart food led pub that also has a lounge area around the main bar just for drinking. The bar usually has two or three ales from the Ember Inns' seasonal list and these are often from national breweries.



Why not take a walk to Enfield Chase Station via the Cricketers and the Crown and Horseshoes...

CREWS HILL STATION

Local exploring... Crews Hill is said to be one of the largest concentrations of specialist garden centres, nurseries, and aquatics centres in Western Europe. Here you can find everything for your gardening needs, including a vast range of plants and shrubs, garden design, landscaping services, and full garden maintenance.



22. The Plough / Cattlegate Rd, Crews Hill, EN2 9DJ (6-min walk from station)

This is a large McMullen's food led pub at the end of all the glass houses and garden centres that stretch along Cattlegate Road, which are the main attractions to see around this station if you are not a golfer that is. A mock Tudor exterior invites you into a multi-sectioned interior with a central bar area and plenty of separate seated areas for dining. The pub also benefits from a large external garden space that accommodates a pétanque pitch and children's play area. There are usually at least three McMullen's ales available with AK Mild, IPA, and Country often appearing alongside a seasonal ale.



Local exploring...

Cuffley's main High Street on Station Road has lively cafés, restaurants, and shops. On 3rd September 1916, the German airship SL 11 was shot down and crashed in Cuffley during an aerial bombardment intended for London.

23. The Plough / Plough Hill, Cuffley, EN6 4DW (9-min walk from station)

A large McMullen's owned pub at the top of the steep Plough Hill, it is part of their Chicken and Grill Arm, leaving you in no doubt where the main focus is. Its upmarket contemporary interior retains several separate areas and although the majority are set for dining, there is plenty of room for drinkers on the right-hand side of the bar.



BAYFORD STATION

Local exploring... The children's television show Catweazle filmed its second season in the Bayford area in 1970. Many of the scenes from the show can still be recognised by fans today.



24. The Farmers Boy / 1 Brickendon Lane, Brickendon, Hertford, SG13 8NU

(13-min walk from station)

A sturdy walk along Brickendon Lane brings you to a fine old village pub in the heart of the community which provides a small bar area to the front just for drinking and then a larger dining area behind. It benefits from a garden to the rear and tables on the grassed area to the front. Usually three real ale hand pumps are in operation with beers drawn from national breweries.

HERTFORD NORTH STATION (wc)

Local exploring... Hertford is a charming market town with two railway stations, Hertford North and Hertford East. The latter serves as the terminus of the Hertford East branch line part of the West Anglia Main Line. Hertford sits at the confluence of four rivers: the Rib, Beane, and Mimram, which merge with the River Lea, eventually becoming the Lee Navigation flowing into the Thames.

The town's medieval roots are evident in its layout, with St Andrew Street featuring several timber-framed buildings. Hertford briefly hosted the Parliament of England in 1563 during a plague in London and inspired the naming of the later Parliament Square.

Look out for Hertford Castle, delve into local history at the Hertford Museum, and enjoy the vibrant array of shops, pubs, and restaurants, many along the riverside. BEAM is a new creative arts and culture venue situated in the heart of Hertford town centre.



McMULLEN'S BREWERY NEARLY 200 YEARS OF BREWING HERITAGE

McMullen's have been brewing in Hertford since 1827 and own around 70 pubs in Hertfordshire. Their famous AK Original Mild has a pedigree dating back to the 1830's. Look out for the regular seasonal handpumped cask beers sometimes sold under the company's Rivertown brand. The former McMullen classic Victorian tower brewery sits opposite the current brewery site in Hartham Lane. Their cask and bottled beers can be purchased from their website or from the on-site shop (on weekdays from 10:00 to 15:00). www.mcmullens.co.uk

**IN 2024, AK ORIGINAL MILD WAS CROWNED HERTFORDSHIRE
BEER OF THE YEAR BY THE HERTFORDSHIRE BRANCHES OF CAMRA.**



25. Mind The Gap / Hertford North Railway Station, SG14 1NB

Located in Hertford North Station's entrance, this is a friendly and enterprising café which also has a couple of craft-keg ales available for the thirsty traveller. Hot pies and pasties are available, plus everything you will need for your rail journey.

26. The Millstream / 88 Port Vale, Hertford, SG14 3AF (7-min walk from station)

A small back street McMullen's pub with a strong local community feel. It focuses on lunchtime and evening food and usually offers three well-kept ales from the McMullen's stable one of which often comes from its Rivertown offshoot. It also benefits from a beautiful garden at the rear with sheltered booth seating.

27. The Old Cross Tavern / St Andrew St, SG14 1JA (11-min walk from station)

A superb town centre Free House with a friendly alehouse feel. Up to six real ales, including a dark beer, come from brewers large and small and there is a fine choice of Belgian bottle-conditioned beers. No TV or music here—just good, old-fashioned conversation. Home-made pork pies and scotch eggs are available.

Hertford is bursting with good places to eat and drink. If you are willing to go beyond our 'happy walking distance' you will find the following decent pubs...

The Woolpack / Millbridge, Hertford, SG14 1PZ (12-min walk from station)
McMullen's welcoming 'brewery tap' is riverside (with terrace) at the head of the River Lea Navigation. The pub features brewery artefacts displayed on its walls. In 2019, existing outbuildings were converted to games rooms for pool, darts and crazy golf. A full range of McMullen/Rivertown cask ales is normally available and there is an interesting food menu which includes a variety of burgers.

The Black Horse / 29-31 West St, Hertford, SG13 8EZ (14-min walk from station)
A traditional Free House with a welcoming timbered interior and a large well-kept hillside garden at the rear which sports a large pizza oven. Close to the start of the Cole Green Way, it is home to the Black Horse RFC. The bar supports six ale pumps and there is an excellent food menu of traditional meals.

The Six Templars / 1 The Wash, Hertford, SG14 1PS (14-min walk from station)
A popular large modern Wetherspoons that opened in 2008 formed by incorporating the structure of a former Unionist Club. With a unique two-storey glass frontage, internally there are two large areas and a sun-trap garden resting against Hertford Castle's walls. The usual Wetherspoons ale and food set up exists with usually four changing beers alongside the standard house ales.

The White Horse / 33 Castle Street, Hertford, SG14 1HH (14-min walk from station)
A charming old timber-framed building with two downstairs bars and additional rooms upstairs, one featuring bar billiards and darts, others where children are welcome. There is a small patio to the rear and benches at the front. The pub is locally listed as an Asset of Community Value and is a Grade II Listed building.

The Old Barge 2 The Folly, Hertford, SG14 1QD (18-min walk from station)
A Free House with a pleasant location by the River Lea with a low beamed multiple spaced interior and plenty of outside seating. There are regular quiz nights and annual events such as the Easter Monday duck race and a music festival in May. The pub regularly serves three changing ales.



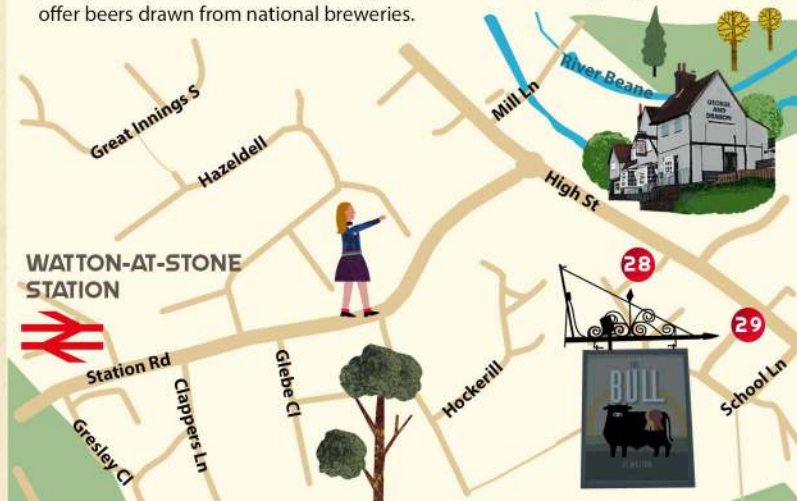
WATTON-AT-STONE STATION

Local exploring... The village of Watton-at-Stone is centred around the High Street and has a bypass on its Eastern side and a railway station on its Western boundary. In addition to the two pubs, the post office and small retail businesses in the High Street, and the local school and doctor's surgery, the village has much to offer people of all ages in terms of leisure activities and quality of life.

28. The George and Dragon / 82 High St, Watton-at-Stone, SG14 3TA
(8-min walk from station)

A large roadside pub dating from the 16th Century, it mainly focuses on food with most of the rambling internal space set out as a restaurant. However, drinkers are welcome in the front bar section and in the garden with petanque area. It is owned and run by Greene King and two of their beers are usually available, although sometimes Timothy Taylor Landlord is seen as a guest ale in place of one of these.

29. The Bull / 113 High St, Watton-at-Stone, SG14 3SB (9-min walk from station)
A food-led pub that was rebuilt in 1990 to the original 15th Century design after being devastated by fire. It boasts period features dominated by a huge inglenook fireplace at the heart of the building. Its south-facing garden includes wooden 'cow sheds' that can be hired individually, as well as an enclosed children's play area, patio, and heated terrace. The bar supports three real ale hand pumps which usually offer beers drawn from national breweries.



HAPPY TRAVELLING!

ACKNOWLEDGEMENTS

Thank you to everyone involved in the project! Project created, managed, and edited by John Cole, Friends of Gordon Hill Station - The Enfield Society and Dave Cockle, Enfield Chase Station Partners - Chair of the Enfield Society

Pub descriptions created by:

Steve Gaines, Winchmore Hill Residents' Association

Special thanks:

Patrick Southern (Community Rail Network), Andrew Chillingsworth (Great Northern), Katie Goldthorpe (Community Rail Partnership Officer at Herts County Council), Mike Hodgkinson and his colleagues from Enfield and Barnet CAMRA Branch and to many others including Paul Hutchinson, Neil Littman and John West.

South Herts CAMRA Branch <https://southherts.camra.org.uk/>

A similar guide to real ale on the New River line from Hertford East to Broxbourne can be found at: <https://www.newriverline.org/news/new-rail-ale-trail>

Funded by:

Design: Community Rail Network

Printing: Great Northern and McMullen & Sons Limited

Designed and illustrated by:

Kremena Dimitrova / www.kremenadimitrova.com

